



MLS 6088695 Lake Land

**\$124,900**

**Description:**

Large lot on Long lake by Vergas. Great fishing and boating. Level building area and elevation to a wooded waters edge. Priced right. Convenient to town.

**Additional Details:**

Lot Acres	1.77
Lot Dimensions	200x316
School District	549
Taxes	\$992
Taxes with Assessments	\$992
Tax Year	2023

**Additional Features:**

**Driving Directions:**

From Vergas follow Cty Hwy 60 3.8m to right on Long Shore Rd follow to left on Long Shore Trl follow to sign.



Listed By:  
Coldwell Banker Preferred Partners

Affinity Real Estate Inc. participates in the Regional Multiple Listing Service of Minnesota, Inc Broker Reciprocity (sm) program, allowing us to display other broker's listings on our website. All properties are subject to prior sale, change or withdrawal.



**Call Affinity Real Estate**

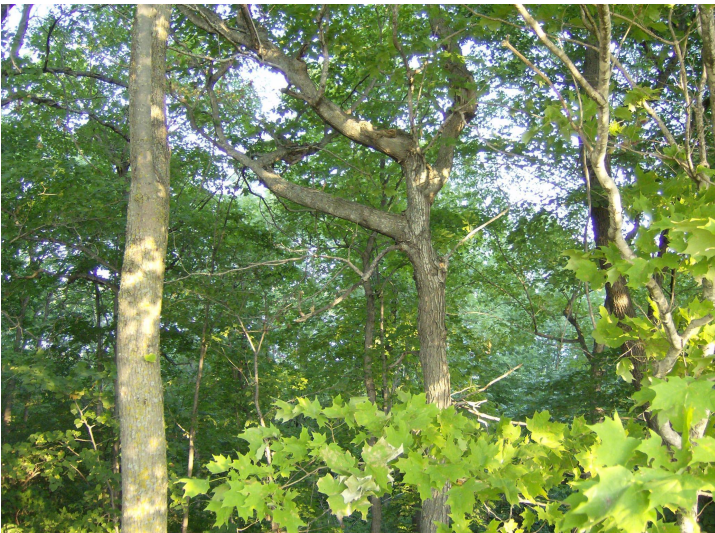
**218-237-3333**

**info@affinityrealestate.com**



**Affinity Real Estate - 600 Park Avenue South - Park Rapids MN 56470**





website: [www.AffinityRealEstate.com](http://www.AffinityRealEstate.com) | email: [info@affinityrealestate.com](mailto:info@affinityrealestate.com) | office: 218-237-3333 | fax: 218-237-3377



**\$124,900**  
MLS 6088695 Lake Land  
XXX Long Shores Trl.  
Frazee MN 56544





website: [www.AffinityRealEstate.com](http://www.AffinityRealEstate.com) | email: [info@affinityrealestate.com](mailto:info@affinityrealestate.com) | office: 218-237-3333 | fax:218-237-3377



**\$124,900**  
MLS 6088695 Lake Land  
XXX Long Shores Trl.  
Frazee MN 56544