



MLS 6120427 Residential

\$259,900

3,120 sq ft
4 bedrooms
2 baths

6696 Big Bass Road
Bemidji MN 56601

Status: Closed

Description:

The possibilities are only limited by your CREATIVITY with this home! Conveniently located close to lakes, trails, and all the amenities our Northwoods has to offer! This home has been extensively renovated (and added onto) and features a beautiful in law suite or studio space. Set up your showing today!!!

Additional Details:

Year Built	1996
Lot Acres	2
Lot Dimensions	470x269
School District	31
Taxes	\$1,338
Taxes with Assessments	\$1,338
Tax Year	2021

Additional Features:

Basement: None **Fuel:** Propane **Heat:** Forced Air **Sewer:** Private Sewer **Water:** Private **Air Conditioning:** None

Driving Directions:

County Rd 20 to New Bass Rd, or Lake Ave East to New Bass Rd, go to Big Bass Rd to property on the right.



Listed By:
Rogue Real Estate Co.

Affinity Real Estate Inc. participates in the Regional Multiple Listing Service of Minnesota, Inc Broker Reciprocity (sm) program, allowing us to display other broker's listings on our website. All properties are subject to prior sale, change or withdrawal.



Call Affinity Real Estate

218-237-3333

info@affinityrealestate.com



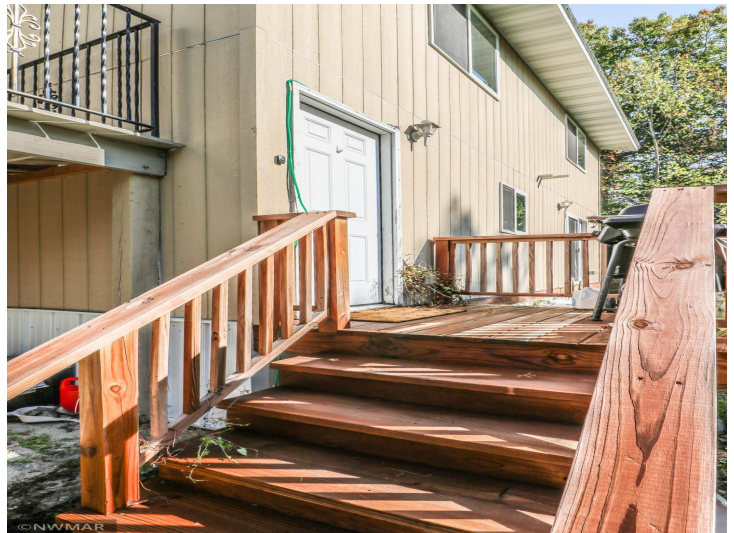
Affinity Real Estate - 600 Park Avenue South - Park Rapids MN 56470



website: www.AffinityRealEstate.com | email: info@affinityrealestate.com | office: 218-237-3333 | fax: 218-237-3377



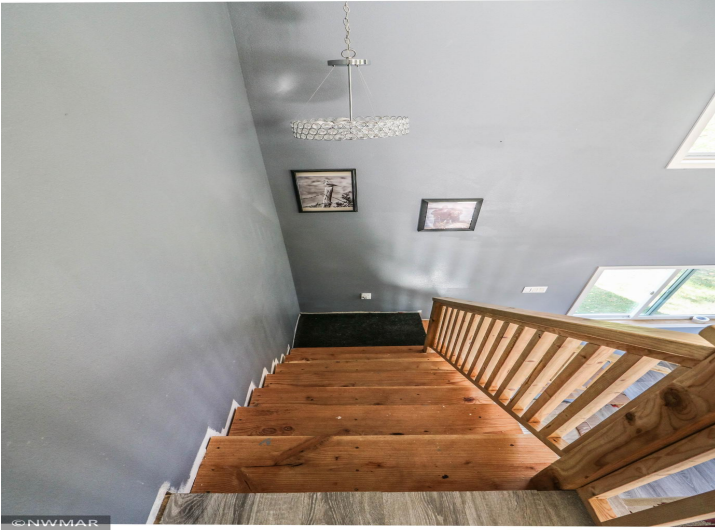
\$259,900
 MLS 6120427 Residential
 6696 Big Bass Road
 Bemidji MN 56601



website: www.AffinityRealEstate.com | email: info@affinityrealestate.com | office: 218-237-3333 | fax: 218-237-3377

Affinity
REAL ESTATE INC

\$259,900
MLS 6120427 Residential
6696 Big Bass Road
Bemidji MN 56601



website: www.AffinityRealEstate.com | email: info@affinityrealestate.com | office: 218-237-3333 | fax: 218-237-3377

Affinity
REAL ESTATE INC

\$259,900
MLS 6120427 Residential
6696 Big Bass Road
Bemidji MN 56601