



MLS 6161696 Lake Land

**\$33,500**

**Description:**

Beautiful 1 to 3-acre open lots in Pelican River Estates. Block 2 with trees between building sites and river. All of these lots have expansive views, room for extra buildings and recreational benefits of hiking and canoeing on the river. Close to I-94 and minutes from Fergus Falls. Covenants apply.

**Additional Details:**

Lot Acres	1.66
Lot Dimensions	88,998 SF
School District	544
Taxes	\$230
Taxes with Assessments	\$244
Tax Year	2025

**Additional Features:**

**Driving Directions:**

From Fergus Falls take Hwy 88 3 miles to property. Parcel is west of Pelican River and north of Hwy 88.



Listed By:  
Century 21 Atwood

Affinity Real Estate Inc. participates in the Regional Multiple Listing Service of Minnesota, Inc Broker Reciprocity (sm) program, allowing us to display other broker's listings on our website. All properties are subject to prior sale, change or withdrawal.



**Call Affinity Real Estate**

**218-237-3333**

**[info@affinityrealestate.com](mailto:info@affinityrealestate.com)**



**Affinity Real Estate - 600 Park Avenue South - Park Rapids MN 56470**



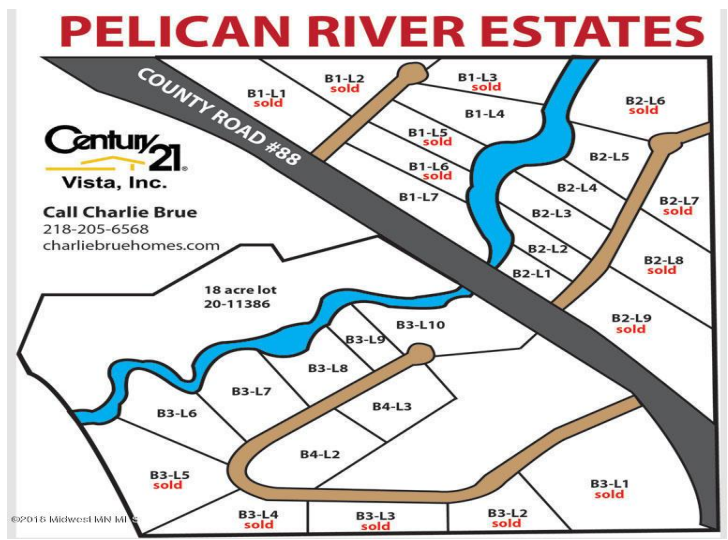
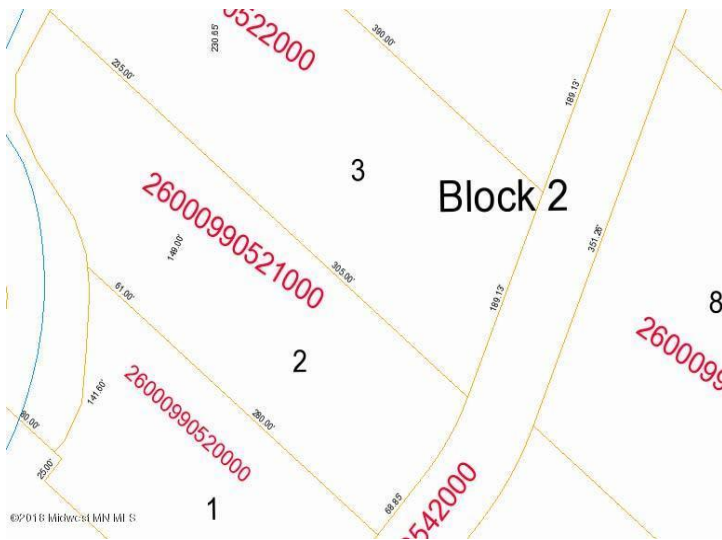


website: [www.AffinityRealEstate.com](http://www.AffinityRealEstate.com) | email: [info@affinityrealestate.com](mailto:info@affinityrealestate.com) | office: 218-237-3333 | fax: 218-237-3377



**\$33,500**  
 MLS 6161696 Lake Land  
 Blk 2 Lot 2 County Rd 88  
 Fergus Falls MN 56537





website: [www.AffinityRealEstate.com](http://www.AffinityRealEstate.com) | email: [info@affinityrealestate.com](mailto:info@affinityrealestate.com) | office: 218-237-3333 | fax: 218-237-3377



**\$33,500**

MLS 6161696 Lake Land  
Blk 2 Lot 2 County Rd 88  
Fergus Falls MN 56537