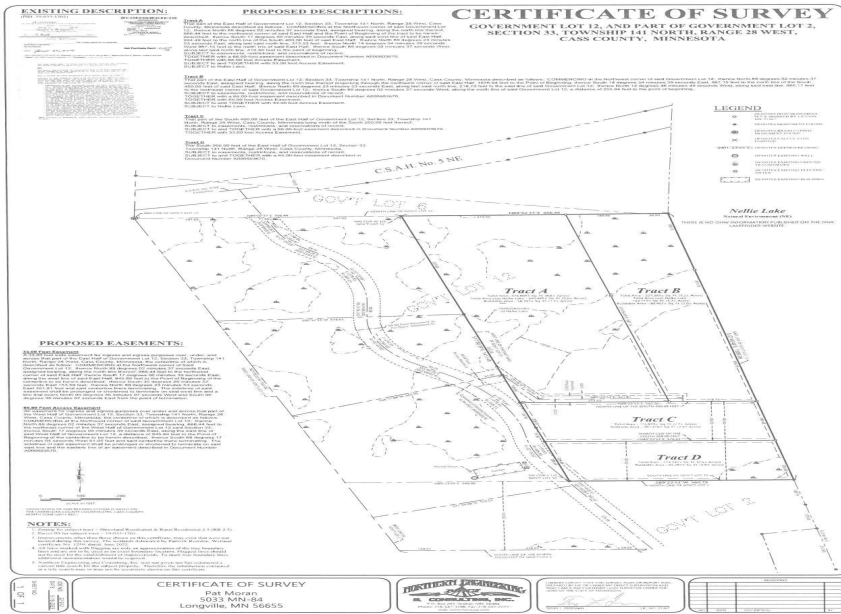




MLS 6162971 Lake Land

**\$30,000**



#### Description:

New split. Taxes and PID are subject to the new split. 5.4 acres mixed hardwoods with good road and utility access. This Nellie lake lot is on the back waters/ wetlands and has beaver runs across the lake fronts, maybe navigable by a canoe or duck boat under the right water conditions. 2 min from downtown Longville. Closings can occur after the wetland delineation and septic evaluation/designs have been completed from the mid to the end of May.

#### Additional Details:

Lot Acres	5.2
Lot Dimensions	322x661x451x601
School District	118
Taxes	(unreported)
Taxes with Assessments	(unreported)
Tax Year	2022

#### Additional Features:

#### Driving Directions:

From Longville west on county road 5, left onto sawmill trail.



Listed By:  
Moran Realty

Affinity Real Estate Inc. participates in the Regional Multiple Listing Service of Minnesota, Inc Broker Reciprocity (sm) program, allowing us to display other broker's listings on our website. All properties are subject to prior sale, change or withdrawal.



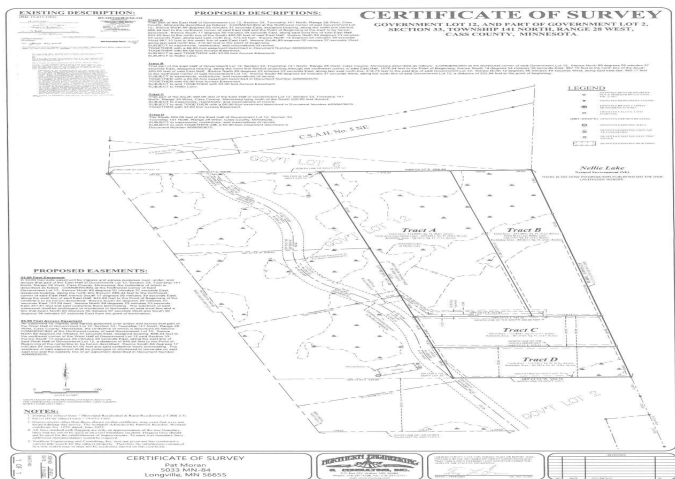
Call Affinity Real Estate

**218-237-3333**

[info@affinityrealestate.com](mailto:info@affinityrealestate.com)



Affinity Real Estate - 600 Park Avenue South - Park Rapids MN 56470



website: [www.AffinityRealEstate.com](http://www.AffinityRealEstate.com) | email: [info@affinityrealestate.com](mailto:info@affinityrealestate.com) | office: 218-237-3333 | fax: 218-237-3377



**\$30,000**

MLS 6162971 Lake Land  
5113 Tract B Sawmill Trail  
Longville MN 56655