



MLS 6172896 Residential

\$349,900

1,722 sq ft
3 bedrooms
2 baths

TBD Shedhorn Street
Bemidji MN 56601

Status: Active

Description:

Sweet new home to be built in city limits in MOUNTAIN VIEW MEADOWS. Enter this stunning one story home into an open concept kitchen, living, dining area that opens to a back covered porch. The Red Rock Home boasts a master bedroom suite with a walk in closet, master bath with soaker tub, shower and double vanity. Located off the family room you will find a laundry mud room also accessible from the two car garage Two additional bedrooms surrounding a full bath completes this homes charm. Call for more details.

Additional Details:

Year Built	2022
Lot Acres	0.38
Lot Dimensions	85x110x75x120
Garage Stalls	2
School District	31
Taxes	\$10
Taxes with Assessments	\$10
Tax Year	2021

Additional Features:

Basement: None **Fuel:** Natural Gas **Garage:** 2 **Heat:** Forced Air **Sewer:** City Sewer - In Street **Water:** City Water - In Street **Air Conditioning:** Central Air

Driving Directions:

South on Washington Ave S to Shedhorn St SW. Right on Shedhorn St SW. Lot on the right



Listed By:
Better Homes and Gardens Real Estate First Choice

Affinity Real Estate Inc. participates in the Regional Multiple Listing Service of Minnesota, Inc Broker Reciprocity (sm) program, allowing us to display other broker's listings on our website. All properties are subject to prior sale, change or withdrawal.



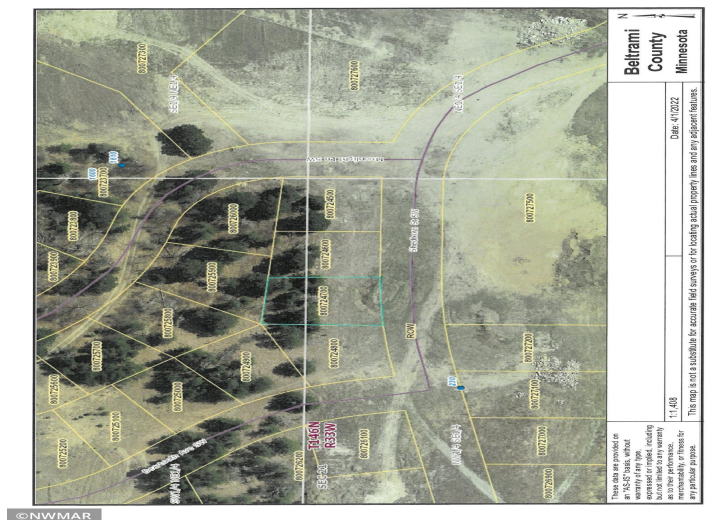
Call Affinity Real Estate

218-237-3333

info@affinityrealestate.com



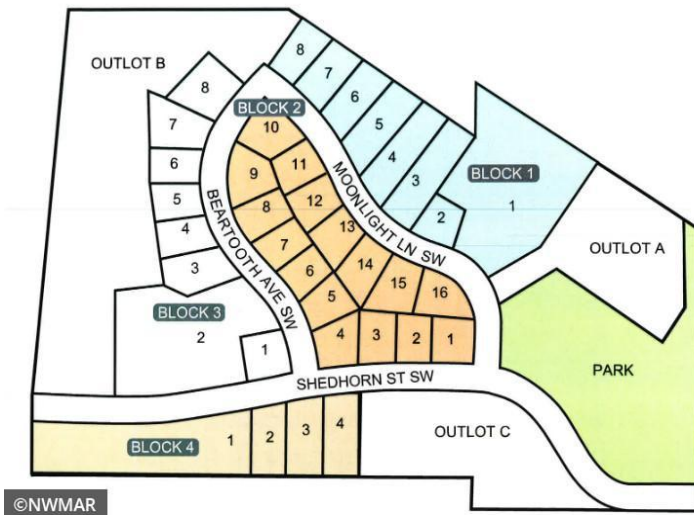
Affinity Real Estate - 600 Park Avenue South - Park Rapids MN 56470



website: www.AffinityRealEstate.com | email: info@affinityrealestate.com | office: 218-237-3333 | fax: 218-237-3377



\$349,900
MLS 6172896 Residential
TBD Shedhorn Street
Bemidji MN 56601



website: www.AffinityRealEstate.com | email: info@affinityrealestate.com | office: 218-237-3333 | fax: 218-237-3377



\$349,900
 MLS 6172896 Residential
 TBD Shedhorn Street
 Bemidji MN 56601