



MLS 6180725 Lake Land

**\$289,000**

**Description:**

Build your dream lake home on this exceptional East facing Eagle Lake Lot 2 which boasts 307 feet of frontage, panoramic lake views and a private 2 acre lot that is heavily wooded with mature trees. Golf enthusiasts will love being right across the road from the 13 hole of the award winning Golden Eagle Golf Course and being part of the Golden Eagle Association. Adventure out for a fun day of boating or fishing on Eagle Lake after a round of golf. Or get out your ATV and head north for a ride on the trail system that is just to the North of this lot. You will soon find out that there are thousands of recreational land for you and your family to enjoy! You will definitely love loving in this great location in the Northern part of the Brainerd Lakes Area as it is additionally situated just a few minutes from all the Fifty Lakes, Emily, Manhattan Beach and Crosslake amenities.

**Additional Details:**

Lot Acres	2
Lot Dimensions	307 x 392 x 210 x 452
School District	2174
Taxes	\$1,522
Taxes with Assessments	\$1,522
Tax Year	2025

**Additional Features:**

**Driving Directions:**

From the intersection of County Road 66 & County Road 1 in Manhattan Beach take County Road 1 East, go 3.6 miles, turn left onto Kego Lake Road, go 0.8 miles, turn right onto Eaglewood Drive, go almost to the end of the road and you will see Lot 2 on your right.



Listed By:  
Larson Group Real Estate/Kelle

Affinity Real Estate Inc. participates in the Regional Multiple Listing Service of Minnesota, Inc Broker Reciprocity (sm) program, allowing us to display other broker's listings on our website. All properties are subject to prior sale, change or withdrawal.



**Call Affinity Real Estate**

**218-237-3333**

**info@affinityrealestate.com**



**Affinity Real Estate - 600 Park Avenue South - Park Rapids MN 56470**





website: [www.AffinityRealEstate.com](http://www.AffinityRealEstate.com) | email: [info@affinityrealestate.com](mailto:info@affinityrealestate.com) | office: 218-237-3333 | fax: 218-237-3377



**\$289,000**

MLS 6180725 Lake Land  
TBD Eaglewood Drive  
Fifty Lakes MN 56448



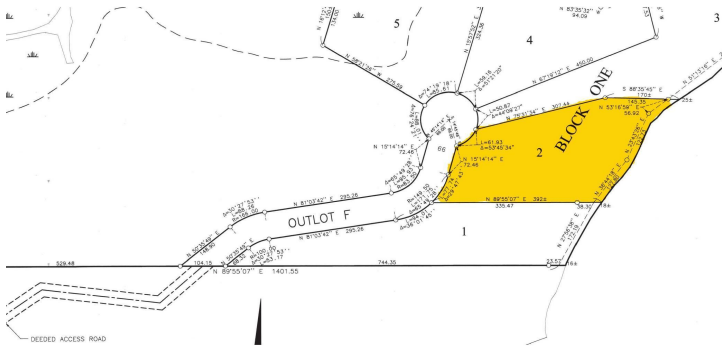


website: [www.AffinityRealEstate.com](http://www.AffinityRealEstate.com) | email: [info@affinityrealestate.com](mailto:info@affinityrealestate.com) | office: 218-237-3333 | fax: 218-237-3377



**\$289,000**  
 MLS 6180725 Lake Land  
 TBD Eaglewood Drive  
 Fifty Lakes MN 56448





website: [www.AffinityRealEstate.com](http://www.AffinityRealEstate.com) | email: [info@affinityrealestate.com](mailto:info@affinityrealestate.com) | office: 218-237-3333 | fax:218-237-3377



**\$289,000**

MLS 6180725 Lake Land  
TBD Eaglewood Drive  
Fifty Lakes MN 56448

website: [www.AffinityRealEstate.com](http://www.AffinityRealEstate.com) | email: [info@affinityrealestate.com](mailto:info@affinityrealestate.com) | office: 218-237-3333 | fax: 218-237-3377



**\$289,000**

MLS 6180725 Lake Land  
TBD Eaglewood Drive  
Fifty Lakes MN 56448