



MLS 6189811 Lake Home

\$177,500

1,196 sq ft
2 bedrooms
2 baths

405 Clausen Avenue
Bemidji MN 56601

Waterfront: Irving

Status: Closed

Description:

Very clean and well kept 2 Bed, 1.75 Bath Condo in Irvingboro. Open concept living area/dining/kitchen, a full bath and master suite. Private patio and laundry in the unit. \$240/month pays for heat, water, sewer, lawn care and snow removal. This condo comes with a double garage and potential for a boat slip in the association's marina. Don't miss this stellar opportunity! See virtual tour in photos tab.

Additional Details:

Year Built	1997
Lot Acres	0.16
Lot Dimensions	24x36
Garage Stalls	2
School District	31
Taxes	\$1,810
Taxes with Assessments	\$1,810
Tax Year	2022

Additional Features:

Basement: None **Fuel:** Natural Gas **Garage:** 2 **Heat:** Hot Water **Sewer:** City Sewer/Connected **Water:** City Water/Connected **Air Conditioning:** Wall Unit(s)

Driving Directions:

West of South Luekens



Listed By:
Grimes Realty

Affinity Real Estate Inc. participates in the Regional Multiple Listing Service of Minnesota, Inc Broker Reciprocity (sm) program, allowing us to display other broker's listings on our website. All properties are subject to prior sale, change or withdrawal.



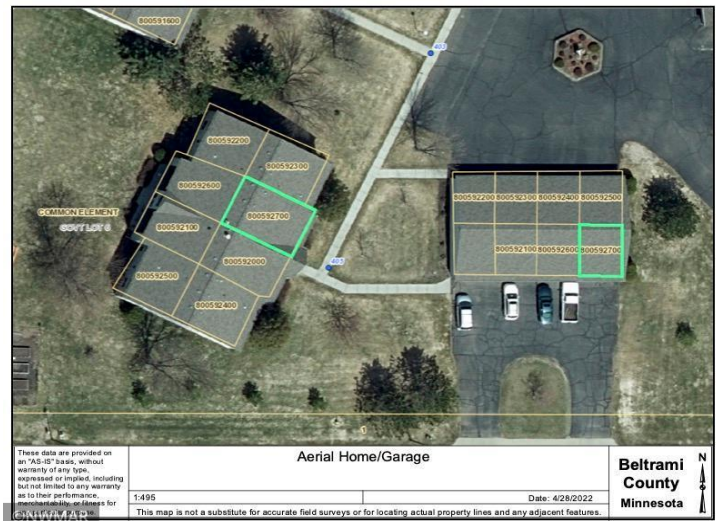
Call Affinity Real Estate

218-237-3333

info@affinityrealestate.com



Affinity Real Estate - 600 Park Avenue South - Park Rapids MN 56470



website: www.AffinityRealEstate.com | email: info@affinityrealestate.com | office: 218-237-3333 | fax: 218-237-3377

Affinity
REAL ESTATE INC

\$177,500
MLS 6189811 Lake Home
405 Clausen Avenue
Bemidji MN 56601



website: www.AffinityRealEstate.com | email: info@affinityrealestate.com | office: 218-237-3333 | fax: 218-237-3377

Affinity
REAL ESTATE INC

\$177,500
MLS 6189811 Lake Home
405 Clausen Avenue
Bemidji MN 56601



website: www.AffinityRealEstate.com | email: info@affinityrealestate.com | office: 218-237-3333 | fax: 218-237-3377



\$177,500
MLS 6189811 Lake Home
405 Clausen Avenue
Bemidji MN 56601