



MLS 6193057 Residential

\$1,950,000

4,030 sq ft
6 bedrooms
4 baths

28419 220th Street
Shevlin MN 56676

Status: Expired

Description:

Tucked back in the woods between Lake Lasalle and Itasca State Park sits this stunning one of kind estate. The property consists of a main 4000+sqft 4 bed 3 bath custom log built home, 1200 sqft 2 bed 1 bath log built guest house, many outbuildings and a very diverse acreage. The home offers amazing views from the large wrap around deck for entertaining, beautiful exposed beams and vaulted ceilings, main floor ensuite, maple cabinetry and finishes, granite countertops, tiled floors and so much more. This is a luxurious hobby farm at its finest with many paddocks, hay fields, rolling hills with maples and oaks and great out buildings. The property is ready to run cattle on or turn your horses loose. It is loaded with wildlife, including whitetail, turkey, black bear, grouse and waterfowl. The mature timber and pond on the property make for a great habitat. This property is a spectacular blend of elements that would make for a wonderful retreat, hobby, or just a dream place to call home.

Additional Details:

Year Built	2010
Lot Acres	276.1
Lot Dimensions	3940x4100
Garage Stalls	2
School District	162
Taxes	\$6,113
Taxes with Assessments	\$6,218
Tax Year	2021

Additional Features:

Basement: Finished, Concrete, Walkout **Fuel:** Propane, Wood **Garage:** 2 **Heat:** Forced Air **Sewer:** Private Sewer **Water:** Well **Air Conditioning:** Central Air

Driving Directions:

from Vern, go east on Co Rd 108 to Clearline Rd and go north about 2 miles to 220th St and go 1 miles to the property on the right.



Listed By:
Whitetail Properties Real Estate

Affinity Real Estate Inc. participates in the Regional Multiple Listing Service of Minnesota, Inc Broker Reciprocity (sm) program, allowing us to display other broker's listings on our website. All properties are subject to prior sale, change or withdrawal.



Call Affinity Real Estate

218-237-3333

info@affinityrealestate.com



Affinity Real Estate - 600 Park Avenue South - Park Rapids MN 56470



website: www.AffinityRealEstate.com | email: info@affinityrealestate.com | office: 218-237-3333 | fax: 218-237-3377



\$1,950,000
 MLS 6193057 Residential
 28419 220th Street
 Shevlin MN 56676



website: www.AffinityRealEstate.com | email: info@affinityrealestate.com | office: 218-237-3333 | fax: 218-237-3377

Affinity
REAL ESTATE INC

\$1,950,000

MLS 6193057 Residential
28419 220th Street
Shevlin MN 56676



website: www.AffinityRealEstate.com | email: info@affinityrealestate.com | office: 218-237-3333 | fax: 218-237-3377



\$1,950,000
 MLS 6193057 Residential
 28419 220th Street
 Shevlin MN 56676



website: www.AffinityRealEstate.com | email: info@affinityrealestate.com | office: 218-237-3333 | fax: 218-237-3377

Affinity
REAL ESTATE INC

\$1,950,000
MLS 6193057 Residential
28419 220th Street
Shevlin MN 56676



website: www.AffinityRealEstate.com | email: info@affinityrealestate.com | office: 218-237-3333 | fax: 218-237-3377

Affinity
REAL ESTATE INC

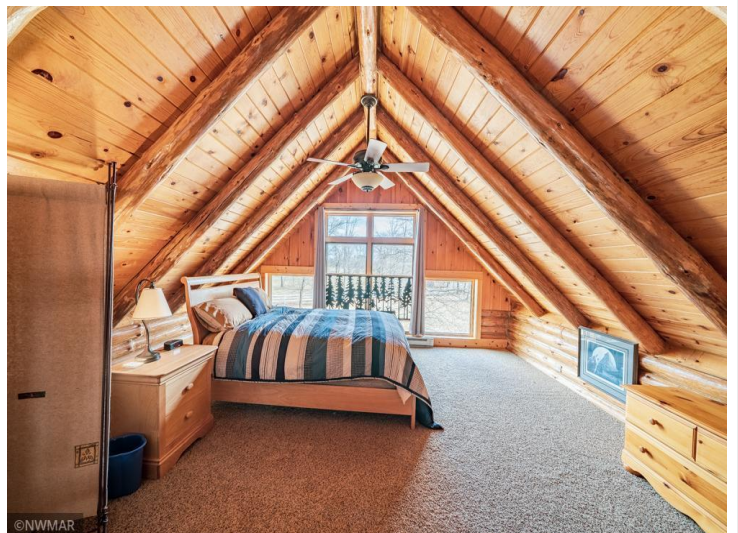
\$1,950,000
MLS 6193057 Residential
28419 220th Street
Shevlin MN 56676



website: www.AffinityRealEstate.com | email: info@affinityrealestate.com | office: 218-237-3333 | fax: 218-237-3377



\$1,950,000
 MLS 6193057 Residential
 28419 220th Street
 Shevlin MN 56676



website: www.AffinityRealEstate.com | email: info@affinityrealestate.com | office: 218-237-3333 | fax: 218-237-3377

Affinity
REAL ESTATE INC

\$1,950,000
MLS 6193057 Residential
28419 220th Street
Shevlin MN 56676



website: www.AffinityRealEstate.com | email: info@affinityrealestate.com | office: 218-237-3333 | fax: 218-237-3377



\$1,950,000
MLS 6193057 Residential
28419 220th Street
Shevlin MN 56676



website: www.AffinityRealEstate.com | email: info@affinityrealestate.com | office: 218-237-3333 | fax: 218-237-3377



\$1,950,000
 MLS 6193057 Residential
 28419 220th Street
 Shevlin MN 56676



website: www.AffinityRealEstate.com | email: info@affinityrealestate.com | office: 218-237-3333 | fax: 218-237-3377



\$1,950,000

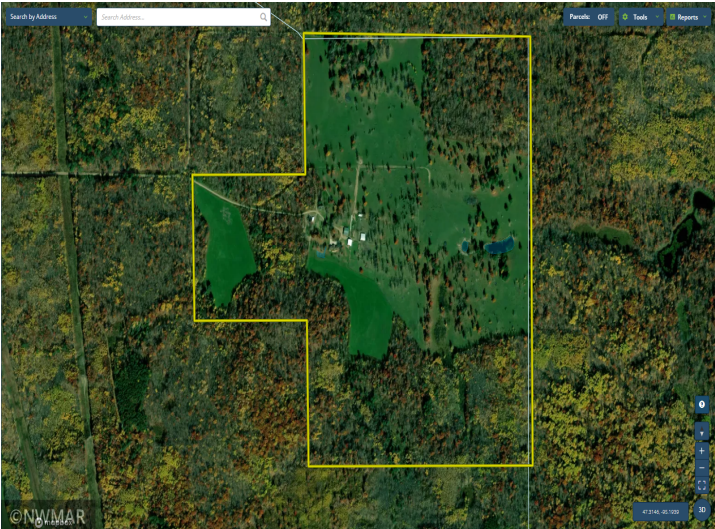
MLS 6193057 Residential
28419 220th Street
Shevlin MN 56676



website: www.AffinityRealEstate.com | email: info@affinityrealestate.com | office: 218-237-3333 | fax: 218-237-3377



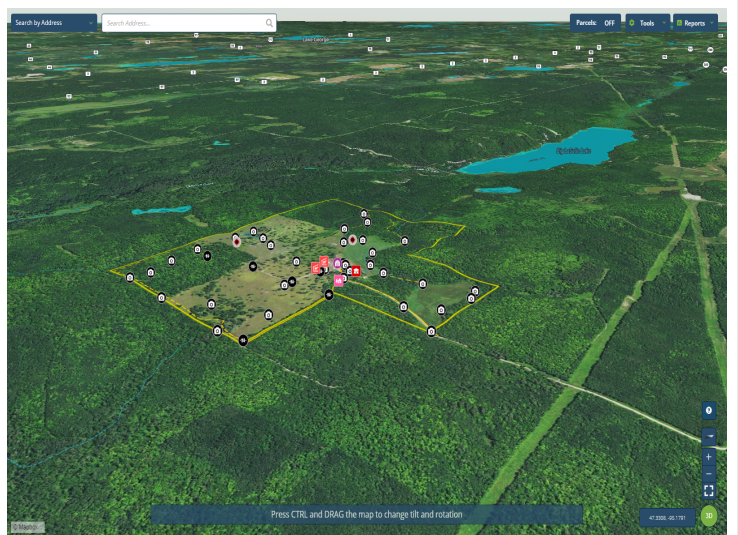
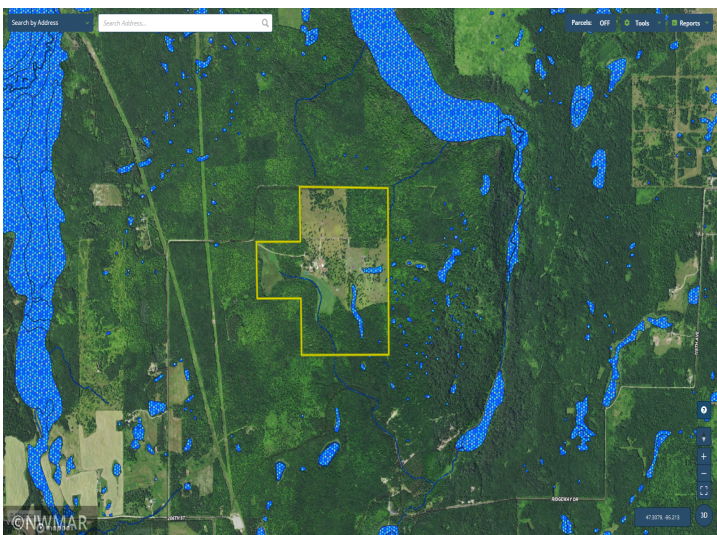
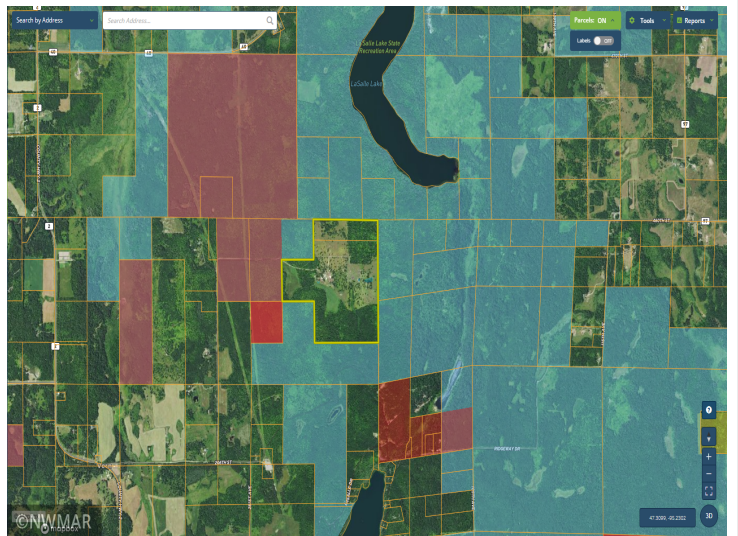
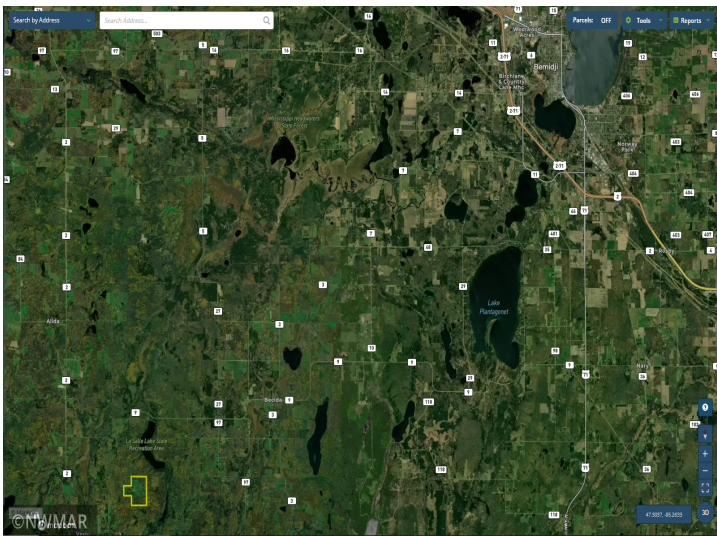
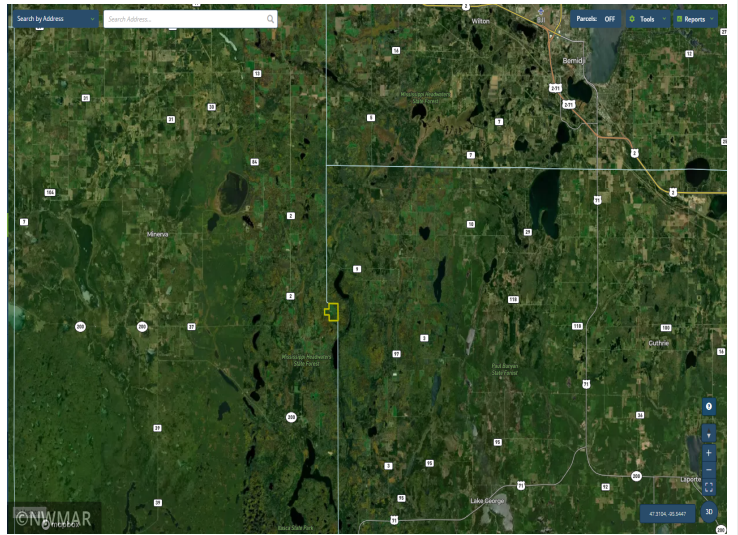
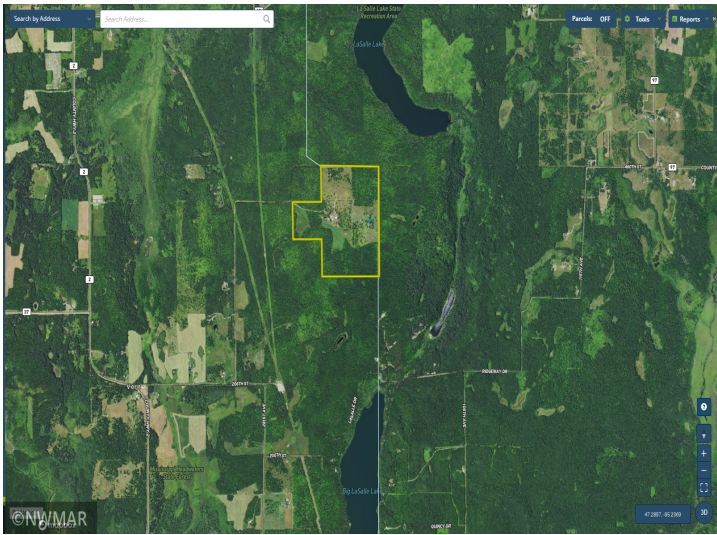
\$1,950,000
 MLS 6193057 Residential
 28419 220th Street
 Shevlin MN 56676



website: www.AffinityRealEstate.com | email: info@affinityrealestate.com | office: 218-237-3333 | fax: 218-237-3377

Affinity
REAL ESTATE INC

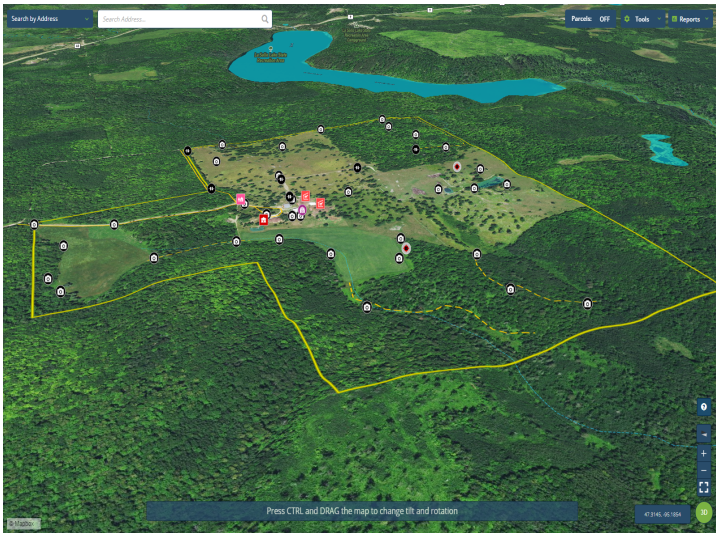
\$1,950,000
MLS 6193057 Residential
28419 220th Street
Shevlin MN 56676



website: www.AffinityRealEstate.com | email: info@affinityrealestate.com | office: 218-237-3333 | fax: 218-237-3377



\$1,950,000
MLS 6193057 Residential
28419 220th Street
Shevlin MN 56676



website: www.AffinityRealEstate.com | email: info@affinityrealestate.com | office: 218-237-3333 | fax:218-237-3377



\$1,950,000
MLS 6193057 Residential
28419 220th Street
Shevlin MN 56676