



MLS 6201022 Lake Land

\$179,000

Description:

Peaceful, secluded, heavily wooded paradise with 780' of frontage on Bootleg Lake. use for a hunting and fishing camp or build your dream home. Good fishing for crappie, perch, sunfish, and northern. Lots of deer and grouse, and the occasional wild turkey and bear. Enjoy watching the bald eagles that nest nearby. 2 parcels consisting of 22.9 acres total.

Additional Details:

Lot Acres	22.9
Lot Dimensions	SEE SURVEY DRAWINGS
School District	31
Taxes	\$778
Taxes with Assessments	\$778
Tax Year	2021

Additional Features:

Driving Directions:

From Gene Dillon Elementary school in Bemidji go south on 7 (Becida Road) for 3.5 miles, then right onto River Heights road to the end. Go right on Old Still Rd to first right.



Listed By:
Headwaters Realty Services

Affinity Real Estate Inc. participates in the Regional Multiple Listing Service of Minnesota, Inc Broker Reciprocity (sm) program, allowing us to display other broker's listings on our website. All properties are subject to prior sale, change or withdrawal.



Call Affinity Real Estate

218-237-3333

info@affinityrealestate.com



Affinity Real Estate - 600 Park Avenue South - Park Rapids MN 56470



website: www.AffinityRealEstate.com | email: info@affinityrealestate.com | office: 218-237-3333 | fax: 218-237-3377



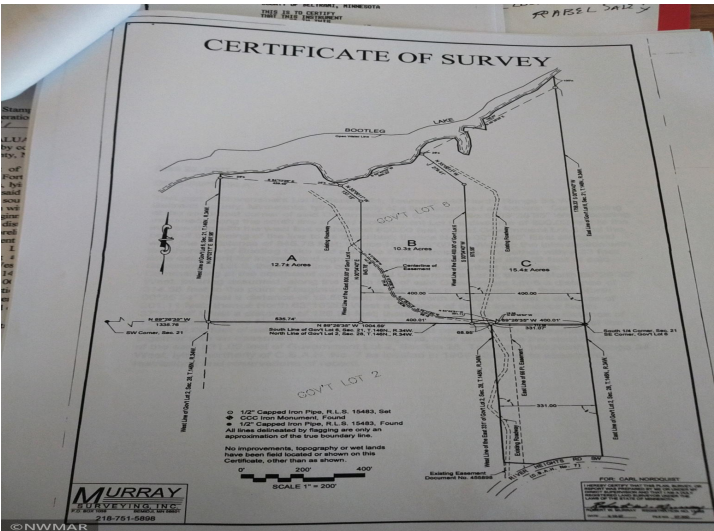
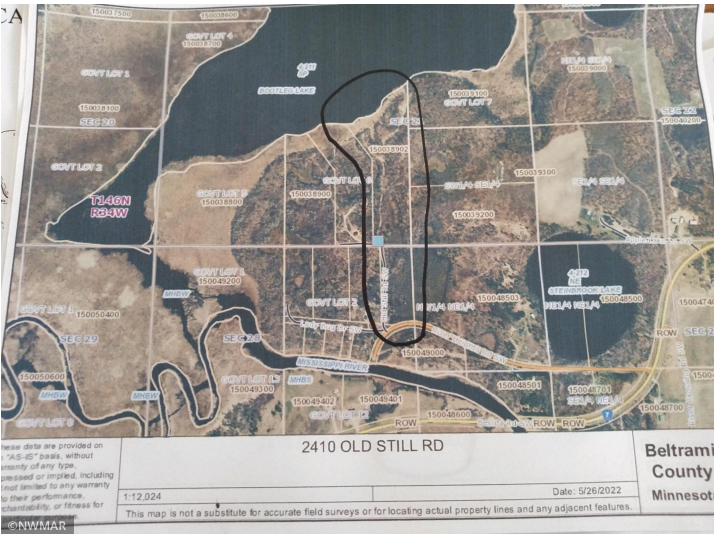
\$179,000
 MLS 6201022 Lake Land
 2410 OLD STILL RD
 Bemidji MN 56601



website: www.AffinityRealEstate.com | email: info@affinityrealestate.com | office: 218-237-3333 | fax: 218-237-3377



\$179,000
MLS 6201022 Lake Land
2410 OLD STILL RD
Bemidji MN 56601



website: www.AffinityRealEstate.com | email: info@affinityrealestate.com | office: 218-237-3333 | fax: 218-237-3377



\$179,000
MLS 6201022 Lake Land
2410 OLD STILL RD
Bemidji MN 56601