

MLS 6201914 Land

\$535,000

27.83 Acres
Raw Land

2723 Oak Street
Brainerd MN 56401

Status: Active

Description:

Outstanding lot location! Close to all the Brainerd area has to offer...schools, shopping, dining, and recreation. Adjacent to assisted living/memory care facility makes this an exceptional opportunity for a mixed residential development. Great topography for positioning lots around towering pine trees and wetlands. Zoned R-3 allowing 4-12 units/acre. This is truly a premier development opportunity.

Additional Details:

Lot Acres	27.83
Lot Dimensions	IRR
School District	896
Taxes	\$4,195
Taxes with Assessments	\$4,195
Tax Year	2025

Additional Features:

Driving Directions:

Hwy 210/Hwy 371 intersection in Brainerd. South on 6th St. East on Oak Street.



Listed By:
Eos Realty, LLC

Affinity Real Estate Inc. participates in the Regional Multiple Listing Service of Minnesota, Inc Broker Reciprocity (sm) program, allowing us to display other broker's listings on our website. All properties are subject to prior sale, change or withdrawal.



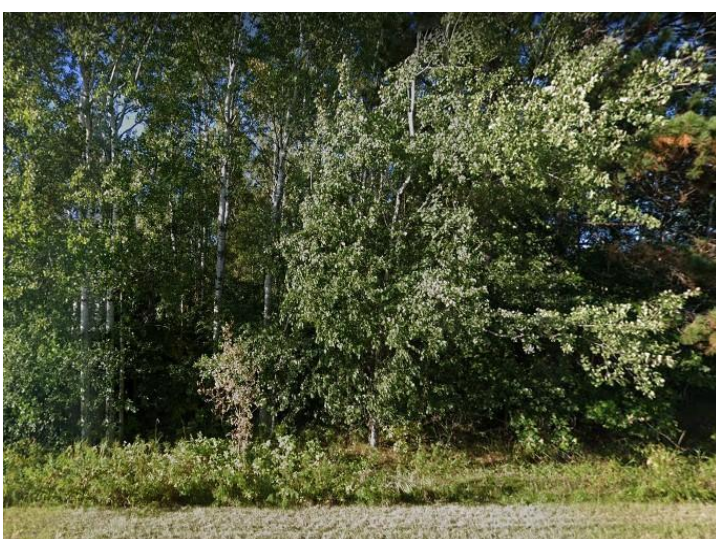
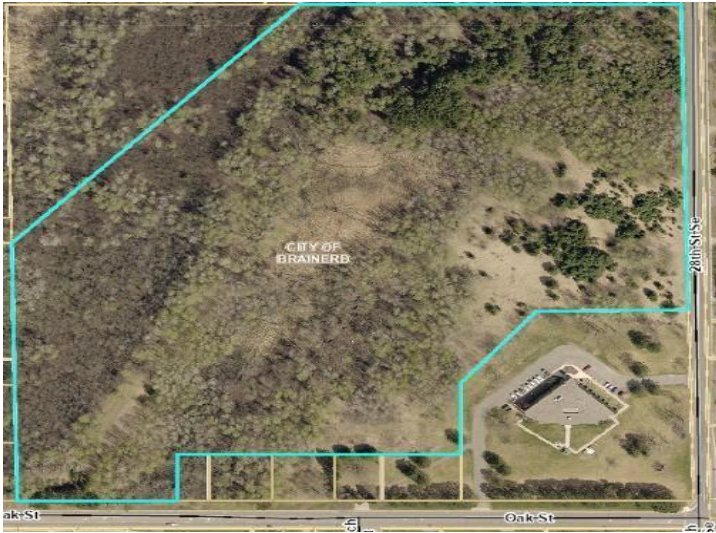
Call Affinity Real Estate

218-237-3333

info@affinityrealestate.com



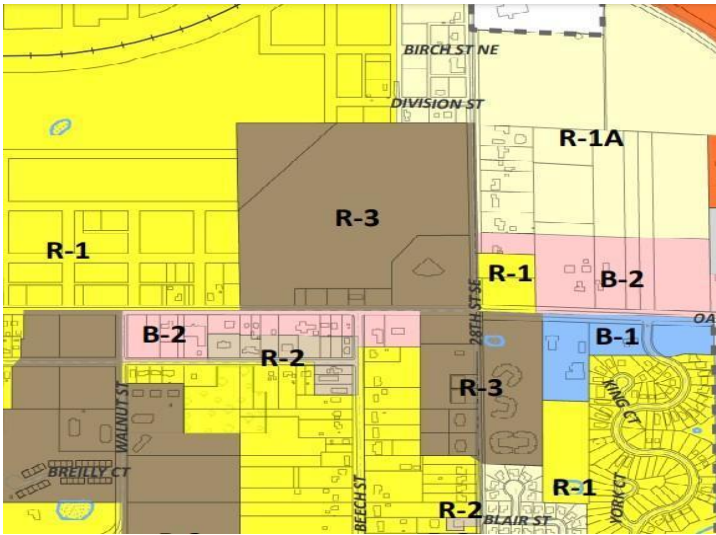
Affinity Real Estate - 600 Park Avenue South - Park Rapids MN 56470



website: www.AffinityRealEstate.com | email: info@affinityrealestate.com | office: 218-237-3333 | fax: 218-237-3377



\$535,000
 MLS 6201914 Land
 2723 Oak Street
 Brainerd MN 56401



website: www.AffinityRealEstate.com | email: info@affinityrealestate.com | office: 218-237-3333 | fax: 218-237-3377



\$535,000
MLS 6201914 Land
2723 Oak Street
Brainerd MN 56401