



MLS 6204143 Commercial

**\$585,000**

1209 30th Street  
Bemidji MN 56601

Status: Expired

**Description:**

Zoned Residential-But surrounded by Commerical Development. A Great Location for Investment or Development

**Additional Details:**

Year Built	1962
Lot Acres	4.32
Lot Dimensions	Irregular
Garage Stalls	1
School District	31
Taxes	\$3,058
Taxes with Assessments	\$3,058
Tax Year	2021

**Additional Features:**

**Fuel:** Natural Gas **Garage:** 1 **Heat:** Forced Air **Sewer:** City Sewer/Connected **Water:** City Water/Connected

**Driving Directions:**

30th St & Ridgeway Ave NW



Listed By:  
Edina Realty, Inc.

Affinity Real Estate Inc. participates in the Regional Multiple Listing Service of Minnesota, Inc Broker Reciprocity (sm) program, allowing us to display other broker's listings on our website. All properties are subject to prior sale, change or withdrawal.



**Call Affinity Real Estate**

**218-237-3333**

**info@affinityrealestate.com**



**Affinity Real Estate - 600 Park Avenue South - Park Rapids MN 56470**



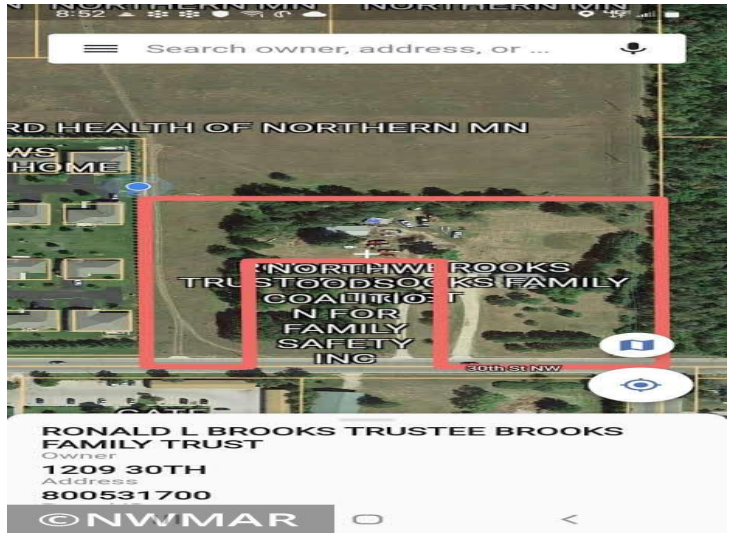


website: [www.AffinityRealEstate.com](http://www.AffinityRealEstate.com) | email: [info@affinityrealestate.com](mailto:info@affinityrealestate.com) | office: 218-237-3333 | fax: 218-237-3377

**Affinity**  
REAL ESTATE INC

**\$585,000**  
MLS 6204143 Commercial  
1209 30th Street  
Bemidji MN 56601





website: [www.AffinityRealEstate.com](http://www.AffinityRealEstate.com) | email: [info@affinityrealestate.com](mailto:info@affinityrealestate.com) | office: 218-237-3333 | fax: 218-237-3377



**\$585,000**

MLS 6204143 Commercial  
1209 30th Street  
Bemidji MN 56601