



MLS 6205031 Land

**\$186,000**

8.58 Acres  
Raw Land

TBD Hwy 71  
Bemidji MN 56601

Status: Expired

#### Description:

High visibility is what you will find on this 8+ acre lot located just south of Bemidji on the corner of Hwy 71 and N Plantagenet Rd (Beltrami County southern border line). These two roads have excellent ingress and egress for all your needs and with traffic counts on Hwy 71 over 9,000 vehicles per day, the possibilities are endless, with township approval.

#### Additional Details:

Lot Acres	8.58
Lot Dimensions	580x500x580x600
School District	31
Taxes	\$534
Taxes with Assessments	\$534
Tax Year	2022

#### Additional Features:

#### Driving Directions:

From Bemidji, south on Hwy 2 or Hwy 71. At intersection of Hwy 2 and Hwy 71, go south on Hwy 71 for 1.4 miles. Property will be on your right (west side of Hwy 71 and north side of N Plantagenet Rd). The land is just south of Horace-May Elementary School.



Listed By:  
Counselor Realty of Bemidji

Affinity Real Estate Inc. participates in the Regional Multiple Listing Service of Minnesota, Inc Broker Reciprocity (sm) program, allowing us to display other broker's listings on our website. All properties are subject to prior sale, change or withdrawal.



Call Affinity Real Estate

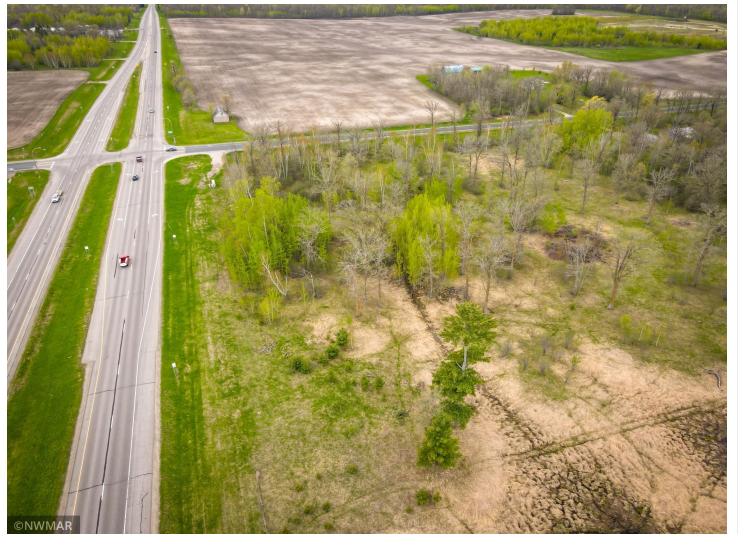
**218-237-3333**

[info@affinityrealestate.com](mailto:info@affinityrealestate.com)



Affinity Real Estate - 600 Park Avenue South - Park Rapids MN 56470





website: [www.AffinityRealEstate.com](http://www.AffinityRealEstate.com) | email: [info@affinityrealestate.com](mailto:info@affinityrealestate.com) | office: 218-237-3333 | fax: 218-237-3377



**\$186,000**  
 MLS 6205031 Land  
 TBD Hwy 71  
 Bemidji MN 56601





website: [www.AffinityRealEstate.com](http://www.AffinityRealEstate.com) | email: [info@affinityrealestate.com](mailto:info@affinityrealestate.com) | office: 218-237-3333 | fax: 218-237-3377



**\$186,000**  
 MLS 6205031 Land  
 TBD Hwy 71  
 Bemidji MN 56601