



MLS 6207795 Land

\$35,000

0.53 Acres
Raw Land

111 Pheasant Street
Audubon MN 56511

Status: Active

Description:

CITY LIVING WITH COUNTRY FEEL AND VIEWS. Easy access to Hwy 10 makes commuting in either direction simple. City water and sewer. Paved frontage road with natural gas available. Many lots available in this newer development with incentives from the city. Build your new home on one lot or purchase multiple for a little more room to play.

Additional Details:

Lot Acres	0.53
Lot Dimensions	irr
School District	2889
Taxes	\$332
Taxes with Assessments	\$332
Tax Year	2025

Additional Features:

Driving Directions:

In Audubon head South on Co Hwy 11. East side of road. Lots on Partridge and Pheasant Street. Look for signs.



Listed By:
Re/Max Lakes Region

Affinity Real Estate Inc. participates in the Regional Multiple Listing Service of Minnesota, Inc Broker Reciprocity (sm) program, allowing us to display other broker's listings on our website. All properties are subject to prior sale, change or withdrawal.



Call Affinity Real Estate

218-237-3333

info@affinityrealestate.com



Affinity Real Estate - 600 Park Avenue South - Park Rapids MN 56470



website: www.AffinityRealEstate.com | email: info@affinityrealestate.com | office: 218-237-3333 | fax: 218-237-3377



\$35,000
 MLS 6207795 Land
 111 Pheasant Street
 Audubon MN 56511



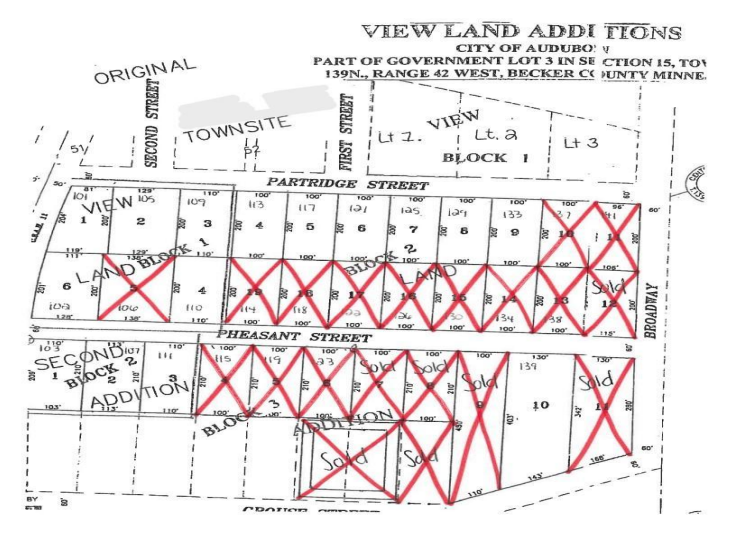
©2021 MIDWEST MN MLS



©2021 MIDWEST MN MLS



©2021 MIDWEST MN MLS



©2021 MIDWEST MN MLS



©2021 MIDWEST MN MLS

website: www.AffinityRealEstate.com | email: info@affinityrealestate.com | office: 218-237-3333 | fax: 218-237-3377

Affinity
REAL ESTATE INC

\$35,000

MLS 6207795 Land
111 Pheasant Street
Audubon MN 56511