



MLS 6208023 Lake Land

**\$95,000**

**Description:**

These lots offer city water and sewer, a beautiful park-like setting, and each lot has its own unique view of Big Detroit, a peaceful pond scene or wooded backdrop. Purchase price includes a storage unit lot. Create the home that best suits you with Tomlinson Schultz Partners, LLC or bring your plan/builder for approval. NO SPECIAL ASSESSMENTS.

**Additional Details:**

Lot Acres	0.15
Lot Dimensions	Common
School District	22
Taxes	\$412
Taxes with Assessments	\$412
Tax Year	2023

**Additional Features:**

**Driving Directions:**

839 South Shore Drive to Lot 6



Listed By:  
RE/MAX LAKES REGION

Affinity Real Estate Inc. participates in the Regional Multiple Listing Service of Minnesota, Inc Broker Reciprocity (sm) program, allowing us to display other broker's listings on our website. All properties are subject to prior sale, change or withdrawal.



Call Affinity Real Estate

**218-237-3333**

[info@affinityrealestate.com](mailto:info@affinityrealestate.com)



Affinity Real Estate - 600 Park Avenue South - Park Rapids MN 56470



website: [www.AffinityRealEstate.com](http://www.AffinityRealEstate.com) | email: [info@affinityrealestate.com](mailto:info@affinityrealestate.com) | office: 218-237-3333 | fax:218-237-3377



**\$95,000**  
 MLS 6208023 Lake Land  
 111 Altavista Drive  
 Detroit Lakes MN 56501



website: [www.AffinityRealEstate.com](http://www.AffinityRealEstate.com) | email: [info@affinityrealestate.com](mailto:info@affinityrealestate.com) | office: 218-237-3333 | fax:218-237-3377



**\$95,000**  
MLS 6208023 Lake Land  
111 Altavista Drive  
Detroit Lakes MN 56501



website: [www.AffinityRealEstate.com](http://www.AffinityRealEstate.com) | email: [info@affinityrealestate.com](mailto:info@affinityrealestate.com) | office: 218-237-3333 | fax:218-237-3377



**\$95,000**  
MLS 6208023 Lake Land  
111 Altavista Drive  
Detroit Lakes MN 56501



website: [www.AffinityRealEstate.com](http://www.AffinityRealEstate.com) | email: [info@affinityrealestate.com](mailto:info@affinityrealestate.com) | office: 218-237-3333 | fax:218-237-3377



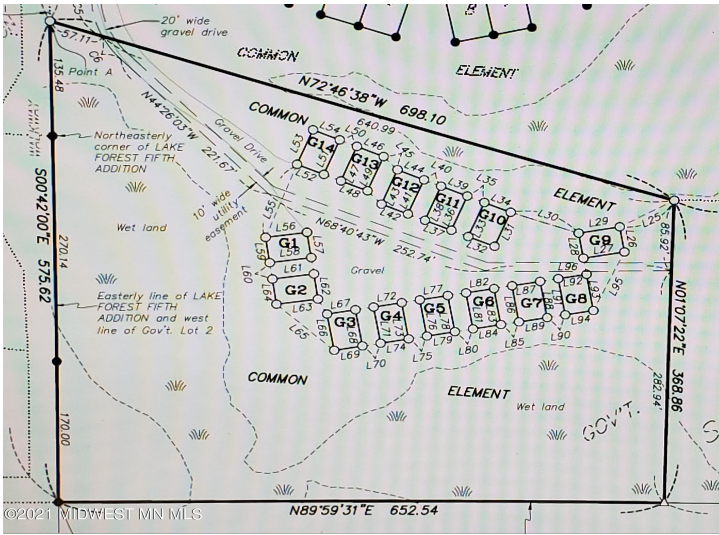
**\$95,000**  
MLS 6208023 Lake Land  
111 Altavista Drive  
Detroit Lakes MN 56501



website: [www.AffinityRealEstate.com](http://www.AffinityRealEstate.com) | email: [info@affinityrealestate.com](mailto:info@affinityrealestate.com) | office: 218-237-3333 | fax:218-237-3377



**\$95,000**  
MLS 6208023 Lake Land  
111 Altavista Drive  
Detroit Lakes MN 56501



website: [www.AffinityRealEstate.com](http://www.AffinityRealEstate.com) | email: [info@affinityrealestate.com](mailto:info@affinityrealestate.com) | office: 218-237-3333 | fax: 218-237-3377



**\$95,000**  
 MLS 6208023 Lake Land  
 111 Altavista Drive  
 Detroit Lakes MN 56501



website: [www.AffinityRealEstate.com](http://www.AffinityRealEstate.com) | email: [info@affinityrealestate.com](mailto:info@affinityrealestate.com) | office: 218-237-3333 | fax:218-237-3377



**\$95,000**  
MLS 6208023 Lake Land  
111 Altavista Drive  
Detroit Lakes MN 56501