

MLS 6208256 Land

\$192,500

275 Acres
Raw Land

390XX Co Hwy 34
Ogema MN 56569

Status: Active

Description:

BECKER COUNTY HUNTING LAND! Large track full of game. A total of 275 acres now available of woods, water, and upland grasses. This one has all the makings for a big buck hunting property, low pressure, endless edges, travel corridors, bedding, variable topography, successful history, and a smoker on camera from this summer! Property includes 2,200 front feet on Bad Boy Lake, known for good Bass, Panfish, Northern Pike fishing. The wetlands are full of wild rice and waterfowl. Deer, turkey, grouse and bear are also present in good numbers. Becker County Tax Forfeited land neighboring to the South. The property is enrolled in a Wild Rice Conservation Easement.

Additional Details:

Lot Acres	275
Lot Dimensions	Irregular
School District	435
Taxes	\$606
Taxes with Assessments	\$606
Tax Year	2023

Additional Features:

Driving Directions:

From White Earth, go east on County Hwy 34 for 1 mile to the property on the south side of County Hwy 34.



Listed By:
Jack Chivers Realty

Affinity Real Estate Inc. participates in the Regional Multiple Listing Service of Minnesota, Inc Broker Reciprocity (sm) program, allowing us to display other broker's listings on our website. All properties are subject to prior sale, change or withdrawal.



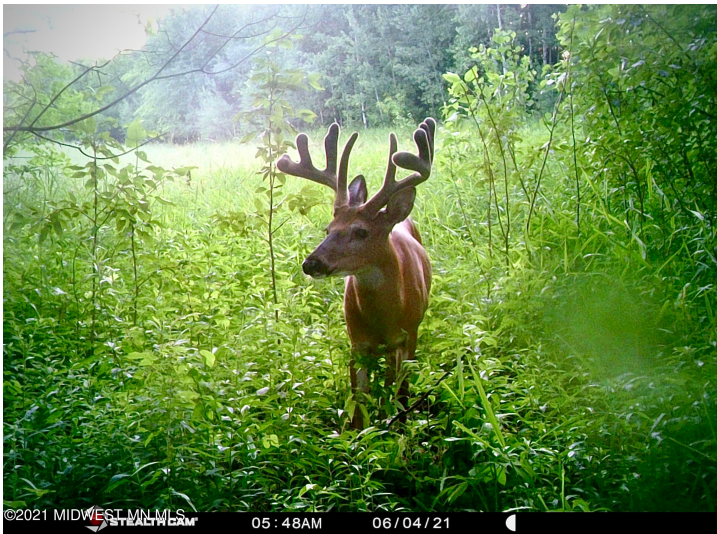
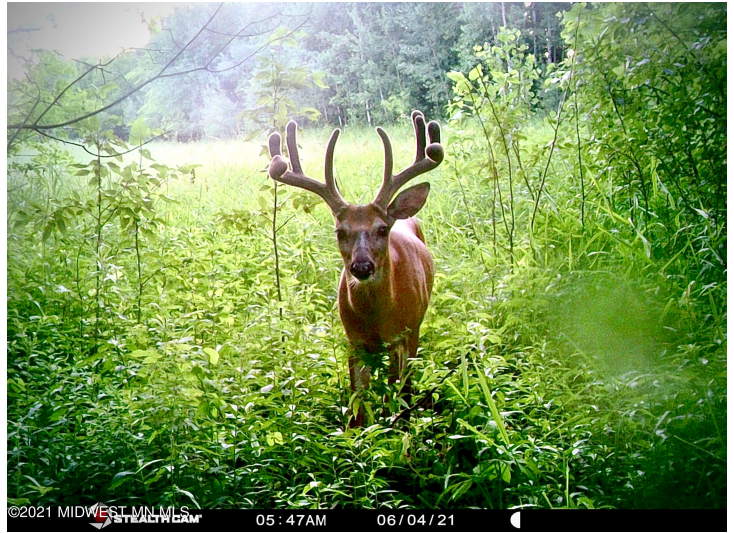
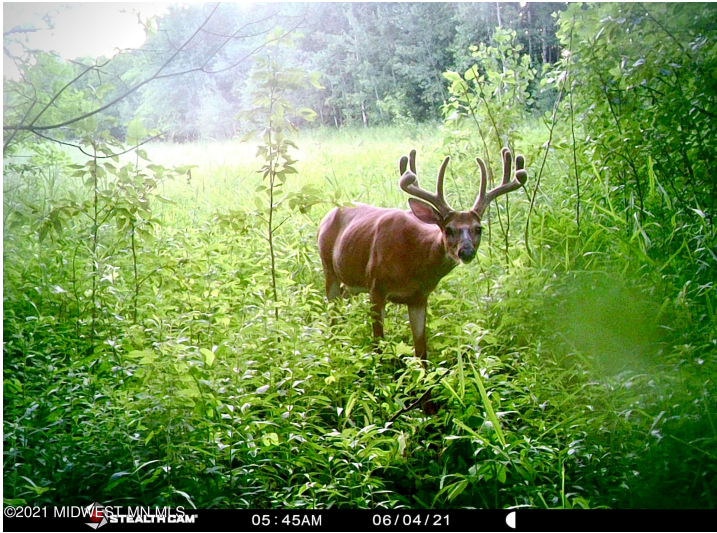
Call Affinity Real Estate

218-237-3333

info@affinityrealestate.com



Affinity Real Estate - 600 Park Avenue South - Park Rapids MN 56470



website: www.AffinityRealEstate.com | email: info@affinityrealestate.com | office: 218-237-3333 | fax: 218-237-3377



\$192,500
MLS 6208256 Land
390XX Co Hwy 34
Ogema MN 56569



website: www.AffinityRealEstate.com | email: info@affinityrealestate.com | office: 218-237-3333 | fax: 218-237-3377



\$192,500
 MLS 6208256 Land
 390XX Co Hwy 34
 Ogema MN 56569



website: www.AffinityRealEstate.com | email: info@affinityrealestate.com | office: 218-237-3333 | fax: 218-237-3377



\$192,500
MLS 6208256 Land
390XX Co Hwy 34
Ogema MN 56569



website: www.AffinityRealEstate.com | email: info@affinityrealestate.com | office: 218-237-3333 | fax: 218-237-3377



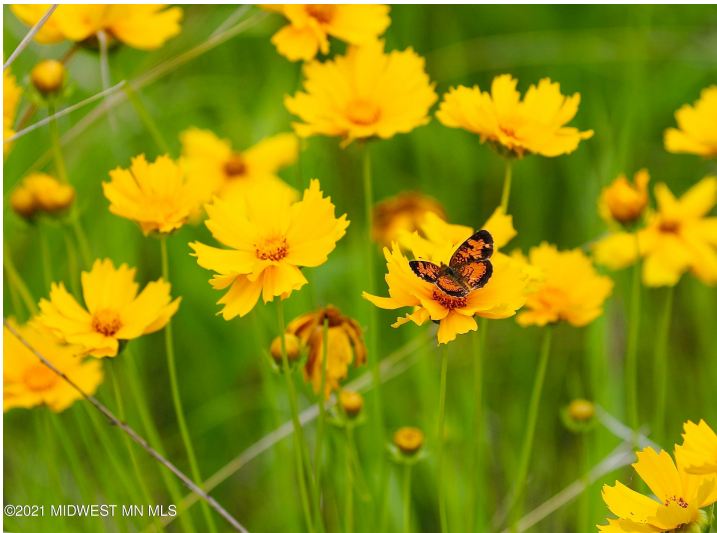
\$192,500
 MLS 6208256 Land
 390XX Co Hwy 34
 Ogema MN 56569



website: www.AffinityRealEstate.com | email: info@affinityrealestate.com | office: 218-237-3333 | fax: 218-237-3377



\$192,500
MLS 6208256 Land
390XX Co Hwy 34
Ogema MN 56569



©2021 MIDWEST MN MLS



©2021 MIDWEST MN MLS



©2021 MIDWEST MN MLS



©2021 MIDWEST MN MLS
WILDVIEW

09:12 PM

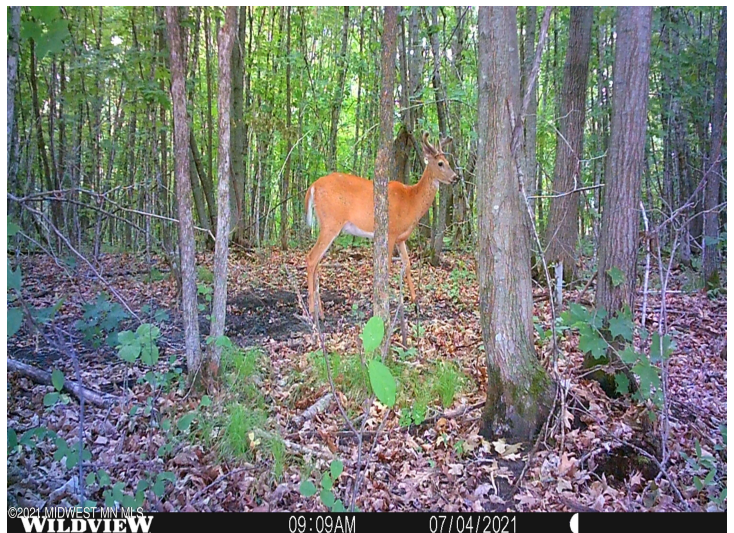
07/02/2021



©2021 MIDWEST MN MLS
WILDVIEW

09:14 PM

07/02/2021



©2021 MIDWEST MN MLS
WILDVIEW

09:09 AM

07/04/2021



website: www.AffinityRealEstate.com | email: info@affinityrealestate.com | office: 218-237-3333 | fax: 218-237-3377

Affinity
REAL ESTATE INC

\$192,500
MLS 6208256 Land
390XX Co Hwy 34
Ogema MN 56569



website: www.AffinityRealEstate.com | email: info@affinityrealestate.com | office: 218-237-3333 | fax: 218-237-3377



\$192,500
MLS 6208256 Land
390XX Co Hwy 34
Ogema MN 56569