



MLS 6208399 Lake Land

\$57,900



Description:

1.92 acre lot available with access to Lake Melissa. Sandy Beach Recreational Area includes a beach hut with storage lockers and bathroom. Large beach area for enjoyment. Great opportunity to build your dream home and have access on the lake.

Additional Details:

Lot Acres	1.92
Lot Dimensions	irr
School District	22
Taxes	\$608
Taxes with Assessments	\$628
Tax Year	2023

Additional Features:

Driving Directions:

Approx. 6 miles south of Detroit Lakes off of Highway 59 on Lake Melissa



Listed By:
Re/Max Lakes Region

Affinity Real Estate Inc. participates in the Regional Multiple Listing Service of Minnesota, Inc Broker Reciprocity (sm) program, allowing us to display other broker's listings on our website. All properties are subject to prior sale, change or withdrawal.



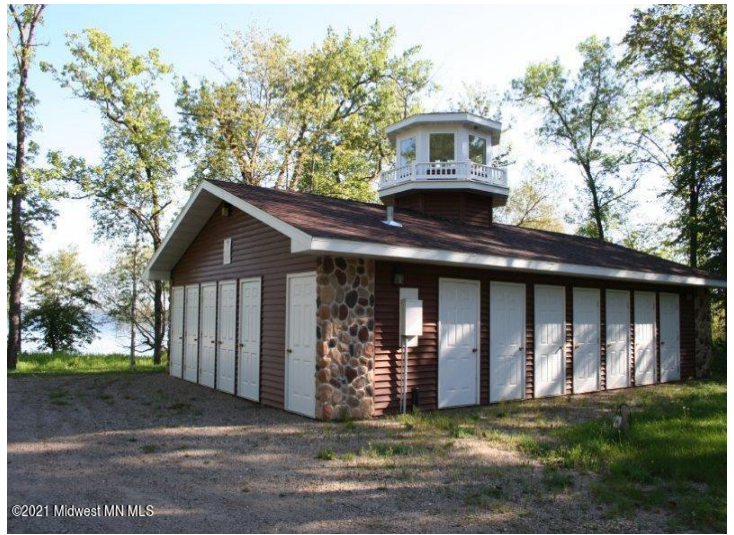
Call Affinity Real Estate

218-237-3333

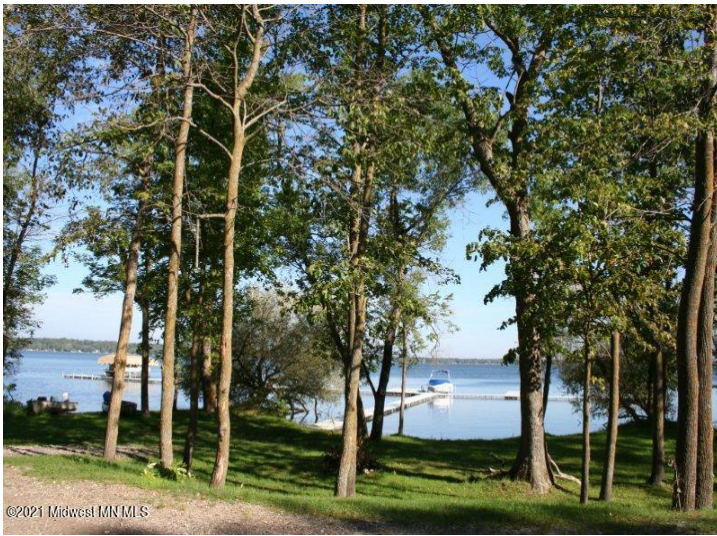
info@affinityrealestate.com



Affinity Real Estate - 600 Park Avenue South - Park Rapids MN 56470



©2021 Midwest MN MLS



©2021 Midwest MN MLS



©2021 Midwest MN MLS



©2021 Midwest MN MLS



©2021 Midwest MN MLS

website: www.AffinityRealEstate.com | email: info@affinityrealestate.com | office: 218-237-3333 | fax:218-237-3377



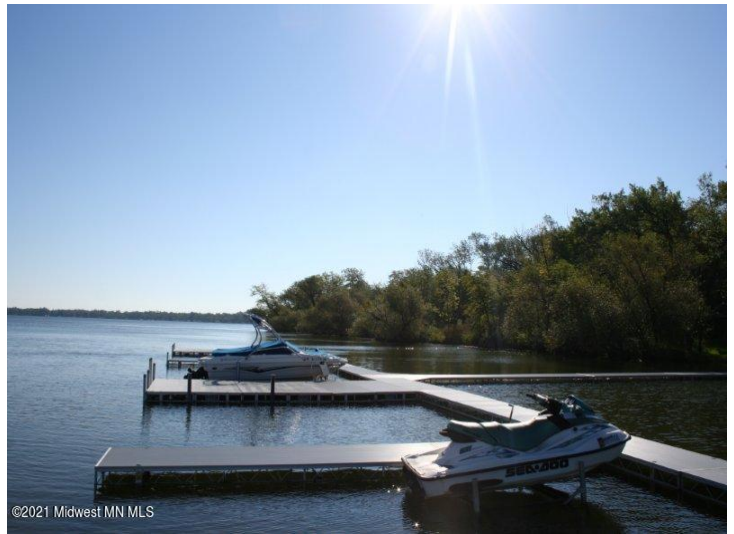
\$57,900
 MLS 6208399 Lake Land
 Tbd 14 Sandy Beach Drive
 Detroit Lakes MN 56501



website: www.AffinityRealEstate.com | email: info@affinityrealestate.com | office: 218-237-3333 | fax:218-237-3377



\$57,900
MLS 6208399 Lake Land
Tbd 14 Sandy Beach Drive
Detroit Lakes MN 56501



website: www.AffinityRealEstate.com | email: info@affinityrealestate.com | office: 218-237-3333 | fax:218-237-3377



\$57,900
MLS 6208399 Lake Land
Tbd 14 Sandy Beach Drive
Detroit Lakes MN 56501