



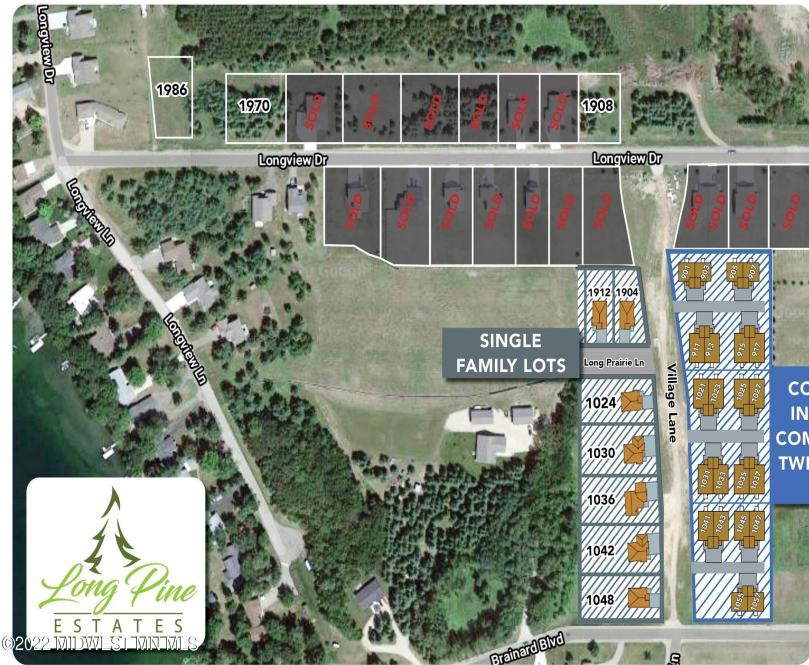
MLS 6216869 Land

\$45,000

0.44 Acres
Subdivided

1048 Village Ln.
Detroit Lakes MN 56501

Status: Active



Description:

Long Pine Estates is located near the western edge of Detroit Lakes, just a short walk away from lakeshore on Long Lake. This development offers homeowners a quiet retreat with the convenience of amenities and services in a thriving community, the combination of the seclusion granted by natural surroundings and its desirous Detroit Lakes location make this development one to grant strong consideration as you move forward in building your dream home. Price is for lot only. The cost of your custom home, to be built by seller, will be in addition to this

Agent related to seller.

Additional Details:

Lot Acres	0.44
Lot Dimensions	194.8 x 99.1
School District	22
Taxes	\$250
Taxes with Assessments	\$2,250
Tax Year	2022

Additional Features:

Driving Directions:

Longview Dr. to Village Ln.



Listed By:
Counselor Realty of Detroit Lakes

Affinity Real Estate Inc. participates in the Regional Multiple Listing Service of Minnesota, Inc Broker Reciprocity (sm) program, allowing us to display other broker's listings on our website. All properties are subject to prior sale, change or withdrawal.



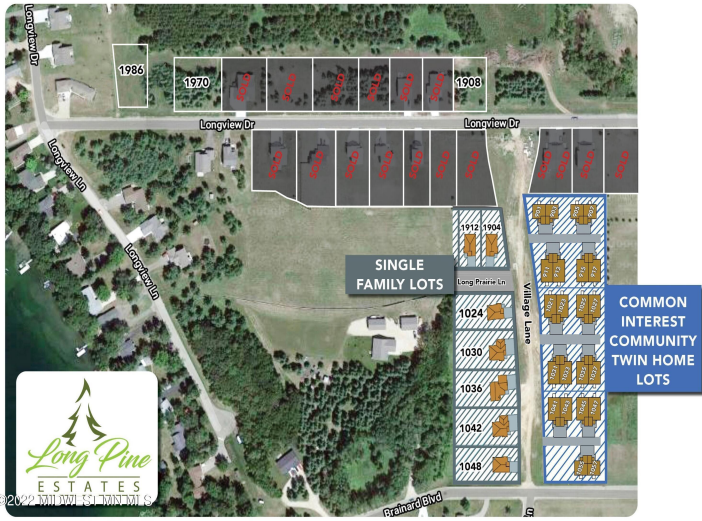
Call Affinity Real Estate

218-237-3333

info@affinityrealestate.com



Affinity Real Estate - 600 Park Avenue South - Park Rapids MN 56470



© 2024 Acme Webwerks

website: www.AffinityRealEstate.com | email: info@affinityrealestate.com | office: 218-237-3333 | fax: 218-237-3377



\$45,000
 MLS 6216869 Land
 1048 Village Ln.
 Detroit Lakes MN 56501