

MLS 6222758 Land

\$73,500

14.51 Acres
Raw Land

TBD Lost Oaks Drive
Cass Lake MN 56633

Status: Expired

Description:

Investors & Buyers, 14+ acres certificate of surveyed-lots already in place, electric close-by and 50ft wide established road.

Come be a part of Wildwood Estates this property is just West of Cass Lake is in the heart of the Cass Lake chain of lakes that offers some of the best fishing, water recreation and wildlife beauty in Northern Minnesota. Wildwood Estates is just a few min from Cedar Lake Casino, 12 Miles from Bemidji and BSU and approximately 15 min from Bemidji Airport.

Additional Details:

Lot Acres	14.51
Lot Dimensions	798.32x854.4xx826.58
School District	115
Taxes	(unreported)
Taxes with Assessments	(unreported)
Tax Year	2022

Additional Features:

Driving Directions:

East on Roosevelt Rd 12 miles, East side of Road Lost Oaks Dr RD. Follow driveway past house property on North side of Lost Oaks Rd.



Listed By:
Realty Experts, LLC

Affinity Real Estate Inc. participates in the Regional Multiple Listing Service of Minnesota, Inc Broker Reciprocity (sm) program, allowing us to display other broker's listings on our website. All properties are subject to prior sale, change or withdrawal.



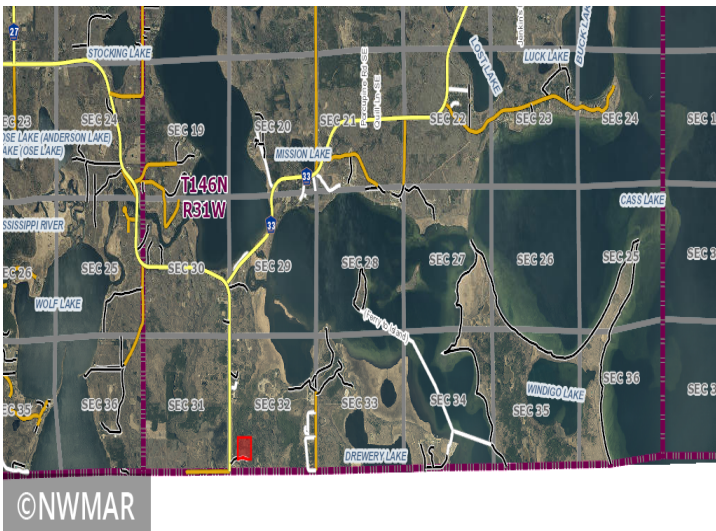
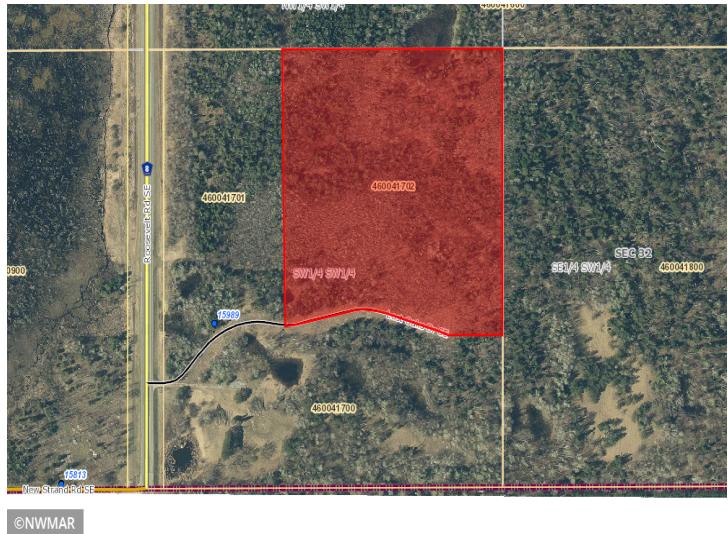
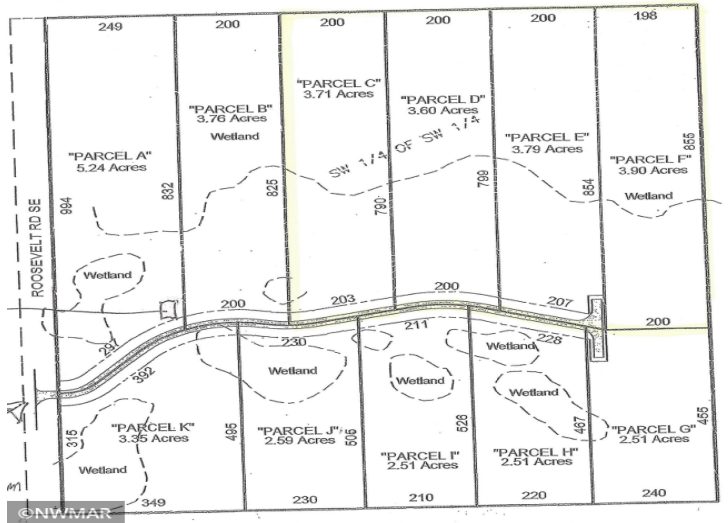
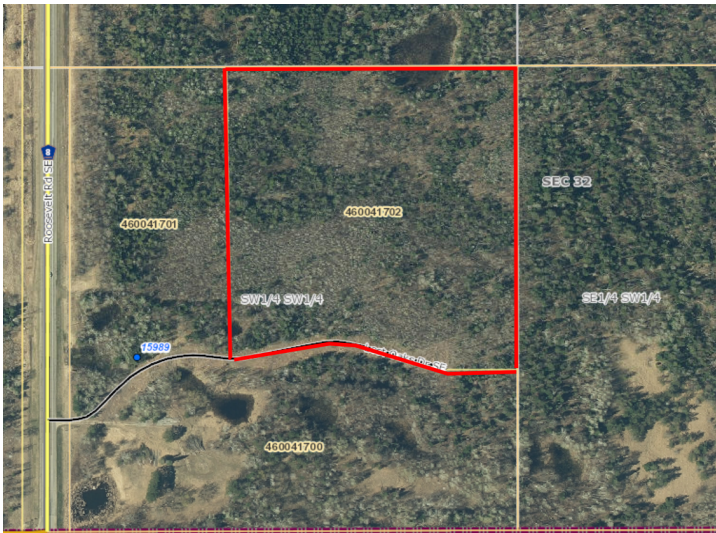
Call Affinity Real Estate

218-237-3333

info@affinityrealestate.com



Affinity Real Estate - 600 Park Avenue South - Park Rapids MN 56470



website: www.AffinityRealEstate.com | email: info@affinityrealestate.com | office: 218-237-3333 | fax: 218-237-3377



\$73,500
 MLS 6222758 Land
 TBD Lost Oaks Drive
 Cass Lake MN 56633



website: www.AffinityRealEstate.com | email: info@affinityrealestate.com | office: 218-237-3333 | fax:218-237-3377



\$73,500
MLS 6222758 Land
TBD Lost Oaks Drive
Cass Lake MN 56633