



MLS 6223179 Land

\$25,000

1 Acres
Raw Land

TBDx1 SW Height of Land Drive
Frazee MN 56544

Status: Expired

Description:

Back lot on the West side of Height of Land Lake is a great place for a storage building or toy parking. No well or septic currently. Great road access. Heavily wooded.

Additional Details:

Lot Acres	1
Lot Dimensions	1 acre
School District	23
Taxes	\$92
Taxes with Assessments	\$92
Tax Year	2022

Additional Features:

Driving Directions:

From Detroit Lakes, travel East on MN Hwy 32 to SW Height of Land Road on left. Follow to property on right.



Listed By:
COLDWELL BANKER AT THE LAKES

Affinity Real Estate Inc. participates in the Regional Multiple Listing Service of Minnesota, Inc Broker Reciprocity (sm) program, allowing us to display other broker's listings on our website. All properties are subject to prior sale, change or withdrawal.



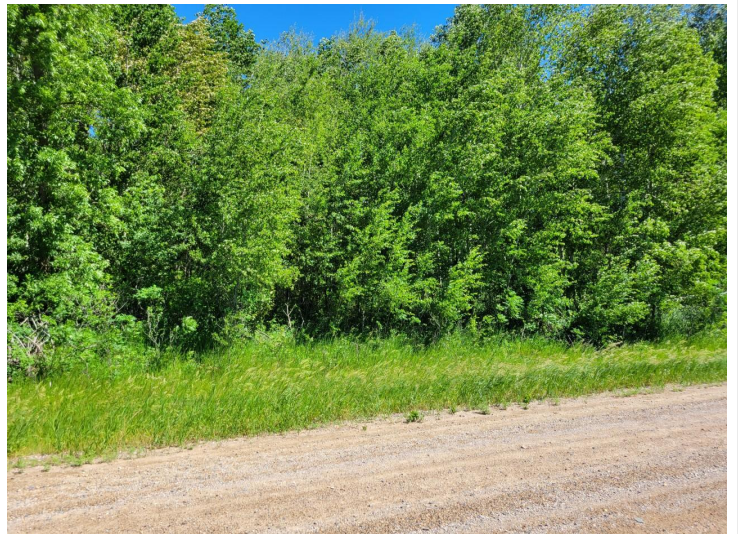
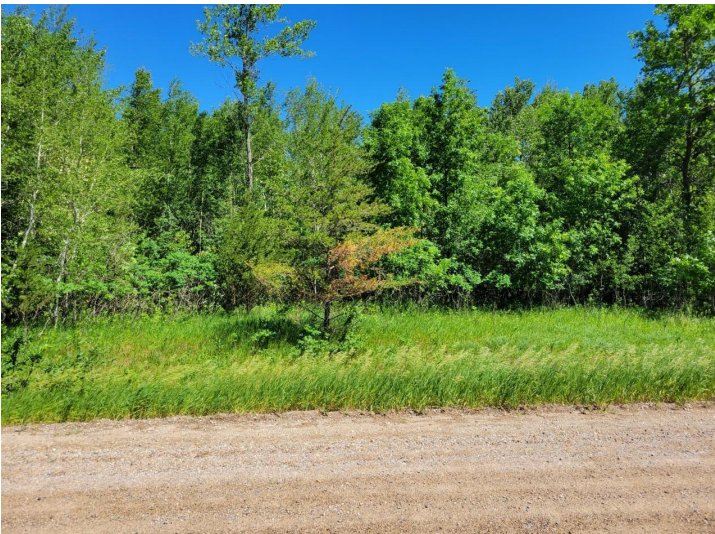
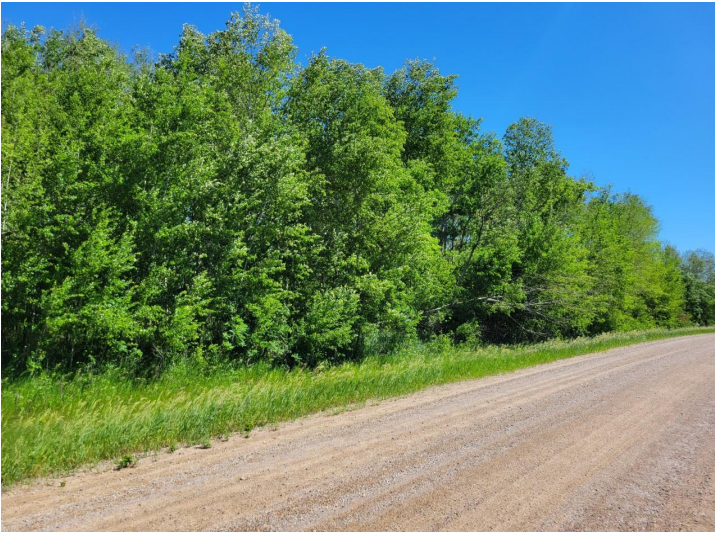
Call Affinity Real Estate

218-237-3333

info@affinityrealestate.com



Affinity Real Estate - 600 Park Avenue South - Park Rapids MN 56470



website: www.AffinityRealEstate.com | email: info@affinityrealestate.com | office: 218-237-3333 | fax: 218-237-3377



\$25,000
MLS 6223179 Land
TBDx1 SW Height of Land
Drive
Frazee MN 56544