



MLS 6232956 Land

**\$225,000**

120 Acres  
Raw Land

TBD 230th Street  
Shevlin MN 56676

Status: Active

**Description:**

120 acres for you to enjoy! This property would make a great building site, located 20 miles North of Itasca State Park 25 miles South of Bemidji. This property is in the heart of Northern Minnesota wildlife country. This beautiful acreage has so many possibilities in a private setting. Property is adjacent to hundreds of acres of public land.

**Additional Details:**

Lot Acres	120
Lot Dimensions	1340x3947
School District	162
Taxes	\$1,192
Taxes with Assessments	\$1,192
Tax Year	2022

**Additional Features:**

**Driving Directions:**

From Bemidji, Hwy 2 West 16 miles, South (left) on County 2 about 11 miles to Alida Rd, turn right heading West about 5 miles, stake a slight left Aspen Rd for 2 miles South, turn left at corner.



Listed By:  
Realty Experts, LLC

Affinity Real Estate Inc. participates in the Regional Multiple Listing Service of Minnesota, Inc Broker Reciprocity (sm) program, allowing us to display other broker's listings on our website. All properties are subject to prior sale, change or withdrawal.



**Call Affinity Real Estate**

**218-237-3333**

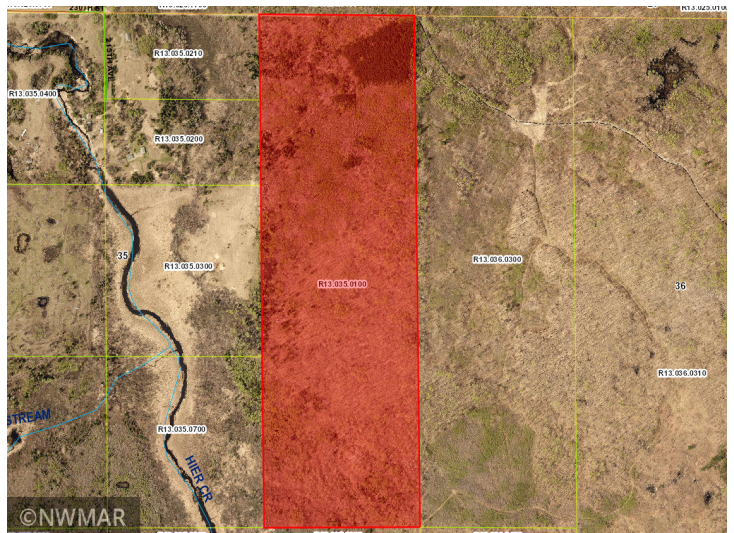
**info@affinityrealestate.com**

MLS



**Affinity Real Estate - 600 Park Avenue South - Park Rapids MN 56470**



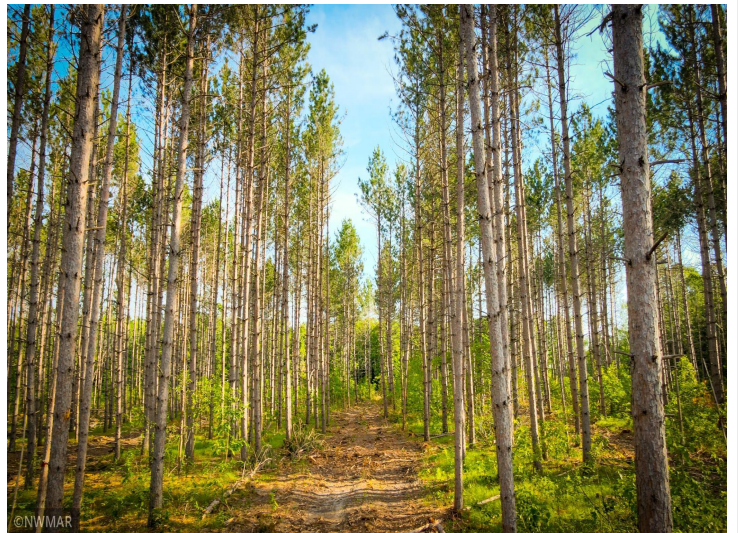


website: [www.AffinityRealEstate.com](http://www.AffinityRealEstate.com) | email: [info@affinityrealestate.com](mailto:info@affinityrealestate.com) | office: 218-237-3333 | fax: 218-237-3377



**\$225,000**  
MLS 6232956 Land  
TBD 230th Street  
Shevlin MN 56676





website: [www.AffinityRealEstate.com](http://www.AffinityRealEstate.com) | email: [info@affinityrealestate.com](mailto:info@affinityrealestate.com) | office: 218-237-3333 | fax: 218-237-3377



**\$225,000**  
 MLS 6232956 Land  
 TBD 230th Street  
 Shevlin MN 56676



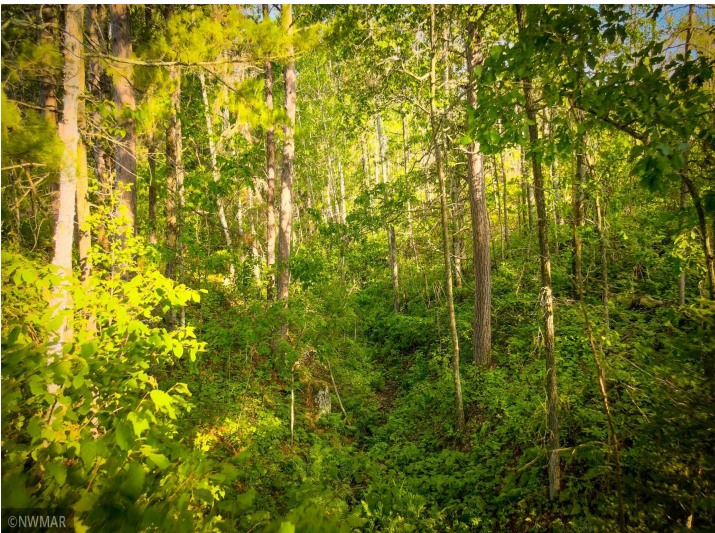


website: [www.AffinityRealEstate.com](http://www.AffinityRealEstate.com) | email: [info@affinityrealestate.com](mailto:info@affinityrealestate.com) | office: 218-237-3333 | fax: 218-237-3377



**\$225,000**  
 MLS 6232956 Land  
 TBD 230th Street  
 Shevlin MN 56676





website: [www.AffinityRealEstate.com](http://www.AffinityRealEstate.com) | email: [info@affinityrealestate.com](mailto:info@affinityrealestate.com) | office: 218-237-3333 | fax: 218-237-3377



**\$225,000**  
 MLS 6232956 Land  
 TBD 230th Street  
 Shevlin MN 56676





website: [www.AffinityRealEstate.com](http://www.AffinityRealEstate.com) | email: [info@affinityrealestate.com](mailto:info@affinityrealestate.com) | office: 218-237-3333 | fax: 218-237-3377



**\$225,000**  
MLS 6232956 Land  
TBD 230th Street  
Shevlin MN 56676





website: [www.AffinityRealEstate.com](http://www.AffinityRealEstate.com) | email: [info@affinityrealestate.com](mailto:info@affinityrealestate.com) | office: 218-237-3333 | fax: 218-237-3377



**\$225,000**  
 MLS 6232956 Land  
 TBD 230th Street  
 Shevlin MN 56676