



MLS 6239108 Lake Land

**\$179,000**

**Description:**

This 24.5 acre piece of land sits between Perham and Frazee with 1825' frontage on Otter Tail River. Gorgeous rolling hills with many possibilities. Build your dream home with a beautiful river view, hunt, fish, and/or farm all on this unique property only minutes to Perham. Access to the property comes across the tracks from Highway 10, giving this a buffer from the highway. 20+ tillable acres and mature trees near the river gives this multiple options, look today!

**Additional Details:**

Lot Acres	24.5
Lot Dimensions	24.5AC
School District	23
Taxes	\$644
Taxes with Assessments	\$644
Tax Year	2024

**Additional Features:**

**Driving Directions:**

From Perham W on Highway 10, property on the right across the tracks from the highway.



Listed By:  
Real Estate Results

Affinity Real Estate Inc. participates in the Regional Multiple Listing Service of Minnesota, Inc Broker Reciprocity (sm) program, allowing us to display other broker's listings on our website. All properties are subject to prior sale, change or withdrawal.



**Call Affinity Real Estate**

**218-237-3333**

**info@affinityrealestate.com**



**Affinity Real Estate - 600 Park Avenue South - Park Rapids MN 56470**



website: [www.AffinityRealEstate.com](http://www.AffinityRealEstate.com) | email: [info@affinityrealestate.com](mailto:info@affinityrealestate.com) | office: 218-237-3333 | fax:218-237-3377

**Affinity**  
REAL ESTATE INC

**\$179,000**  
MLS 6239108 Lake Land  
TBD US HWY 10  
Frazee MN 56544



website: [www.AffinityRealEstate.com](http://www.AffinityRealEstate.com) | email: [info@affinityrealestate.com](mailto:info@affinityrealestate.com) | office: 218-237-3333 | fax:218-237-3377



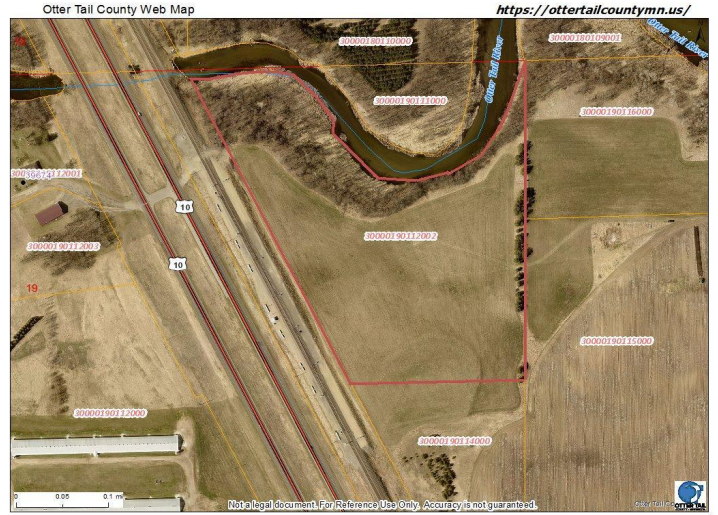
**\$179,000**  
MLS 6239108 Lake Land  
TBD US HWY 10  
Frazee MN 56544



website: [www.AffinityRealEstate.com](http://www.AffinityRealEstate.com) | email: [info@affinityrealestate.com](mailto:info@affinityrealestate.com) | office: 218-237-3333 | fax:218-237-3377



**\$179,000**  
MLS 6239108 Lake Land  
TBD US HWY 10  
Frazee MN 56544



website: [www.AffinityRealEstate.com](http://www.AffinityRealEstate.com) | email: [info@affinityrealestate.com](mailto:info@affinityrealestate.com) | office: 218-237-3333 | fax: 218-237-3377



**\$179,000**  
MLS 6239108 Lake Land  
TBD US HWY 10  
Frazee MN 56544