



MLS 6241072 Commercial

**\$300,000**

725 Carr Lake Road  
Bemidji MN 56601

Status: Closed

**Description:**

More than 13,000 sq ft of roof and 15 acres of land adjacent to industrial park, zoned commercial. One building consists of 3,234 sq ft heated space with natural gas, 3 large bays with their own heat. Each bay is 38'x 66' with separate service entrances and 12'x 14' overhead doors. Another area has 50'x 80' or 4,000 sq ft of cold storage with steel trusses and large overhead door. The remaining 4,920 sq ft consists of storage units with roll up doors: 6'x 10'(2), 12'x 16'(14), & 12'x 22'(8).

The additional building is a 24 x 28 steel building, not insulated, but has electric.

**Additional Details:**

Year Built	1983
Lot Acres	15.17
Lot Dimensions	700x900
Garage Stalls	4
School District	31
Taxes	\$3,006
Taxes with Assessments	\$3,006
Tax Year	2022

**Additional Features:**

**Fuel:** Electric, Natural Gas **Garage:** 4 **Heat:** Space Heater **Sewer:** None **Water:** City Water - In Street

**Driving Directions:**

South on Washington Ave, left on Carr Lake Rd, property on left.



Listed By:  
Century 21 Dickinson

Affinity Real Estate Inc. participates in the Regional Multiple Listing Service of Minnesota, Inc Broker Reciprocity (sm) program, allowing us to display other broker's listings on our website. All properties are subject to prior sale, change or withdrawal.



**Call Affinity Real Estate**

**218-237-3333**

**info@affinityrealestate.com**



**Affinity Real Estate - 600 Park Avenue South - Park Rapids MN 56470**





website: [www.AffinityRealEstate.com](http://www.AffinityRealEstate.com) | email: [info@affinityrealestate.com](mailto:info@affinityrealestate.com) | office: 218-237-3333 | fax: 218-237-3377

**Affinity**  
REAL ESTATE INC

**\$300,000**  
MLS 6241072 Commercial  
725 Carr Lake Road  
Bemidji MN 56601



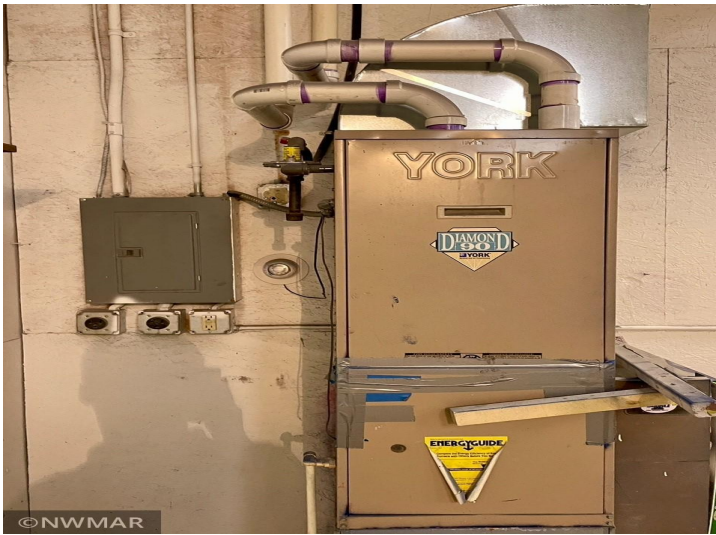


website: [www.AffinityRealEstate.com](http://www.AffinityRealEstate.com) | email: [info@affinityrealestate.com](mailto:info@affinityrealestate.com) | office: 218-237-3333 | fax: 218-237-3377



**\$300,000**  
 MLS 6241072 Commercial  
 725 Carr Lake Road  
 Bemidji MN 56601





website: [www.AffinityRealEstate.com](http://www.AffinityRealEstate.com) | email: [info@affinityrealestate.com](mailto:info@affinityrealestate.com) | office: 218-237-3333 | fax: 218-237-3377



**\$300,000**  
 MLS 6241072 Commercial  
 725 Carr Lake Road  
 Bemidji MN 56601





website: [www.AffinityRealEstate.com](http://www.AffinityRealEstate.com) | email: [info@affinityrealestate.com](mailto:info@affinityrealestate.com) | office: 218-237-3333 | fax: 218-237-3377



**\$300,000**  
 MLS 6241072 Commercial  
 725 Carr Lake Road  
 Bemidji MN 56601