



MLS 6246823 Land

\$17,900

0.46 Acres
Raw Land

L4 B20 WB16 Summer Drive
Breezy Point MN 56472

Status: Active

Description:

Awesome Breezy Point lot just waiting for your dream home. Close to Championship Golf Courses, sandy public beaches, fine dining and many public lake accesses that lead to great fishing.

Additional Details:

Lot Acres	0.46
Lot Dimensions	98x199x100x205
School District	186
Taxes	\$120
Taxes with Assessments	\$62
Tax Year	2025

Additional Features:

Driving Directions:

From Breezy Point Gates, go North on County Road 11 to Left on Autumn Lane, to Right on Summer Drive, to sign on Left.



Listed By:
Kurilla Real Estate LTD

Affinity Real Estate Inc. participates in the Regional Multiple Listing Service of Minnesota, Inc Broker Reciprocity (sm) program, allowing us to display other broker's listings on our website. All properties are subject to prior sale, change or withdrawal.



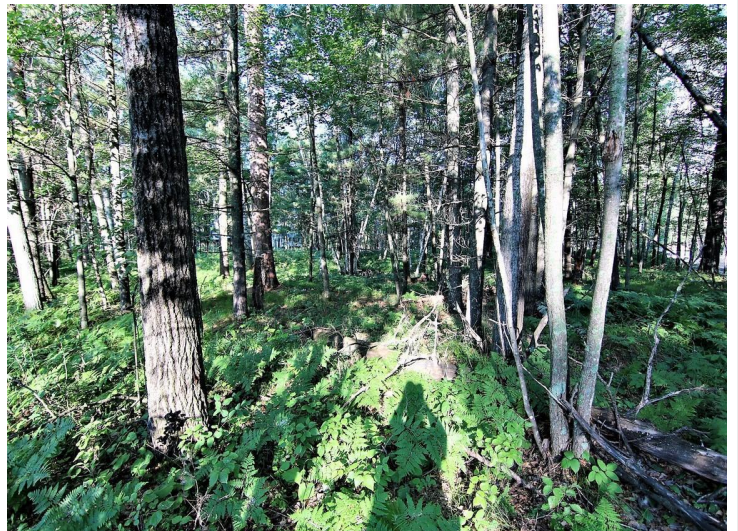
Call Affinity Real Estate

218-237-3333

info@affinityrealestate.com



Affinity Real Estate - 600 Park Avenue South - Park Rapids MN 56470



website: www.AffinityRealEstate.com | email: info@affinityrealestate.com | office: 218-237-3333 | fax: 218-237-3377

Affinity
REAL ESTATE INC

\$17,900
MLS 6246823 Land
L4 B20 WB16 Summer Drive
Breezy Point MN 56472



website: www.AffinityRealEstate.com | email: info@affinityrealestate.com | office: 218-237-3333 | fax:218-237-3377



\$17,900
MLS 6246823 Land
L4 B20 WB16 Summer Drive
Breezy Point MN 56472