



MLS 6250084 Land

\$549,000

48.61 Acres
Raw Land

0 Business Hwy 371
Brainerd MN 56401

Status: Active

Description:

Excellent residential development opportunity in Brainerd, near the Hwy 371 and Buffalo Hills Lane intersection. Ideal for single family, multi-family, or senior housing. This nicely forested acreage provides close access to many major amenities, including schools, churches, shopping, dining, entertainment and recreation.

Additional Details:

Lot Acres	48.61
Lot Dimensions	1394x1400x1261x2162
School District	181
Taxes	\$384
Taxes with Assessments	\$384
Tax Year	2024

Additional Features:

Driving Directions:

Buffalo Hills Lane in Brainerd - South on Business Hwy 371 - Property is the NW corner of Business Hwy 371 and Greenwood Street



Listed By:
Close-Converse Commercial Prop

Affinity Real Estate Inc. participates in the Regional Multiple Listing Service of Minnesota, Inc Broker Reciprocity (sm) program, allowing us to display other broker's listings on our website. All properties are subject to prior sale, change or withdrawal.



Call Affinity Real Estate

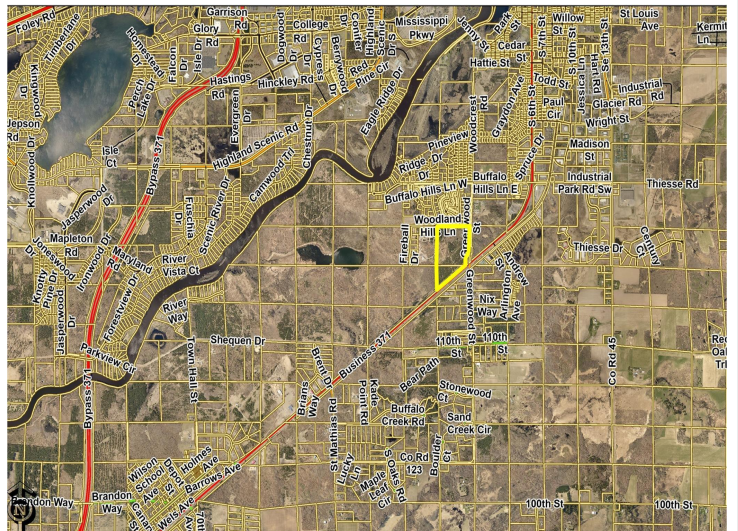
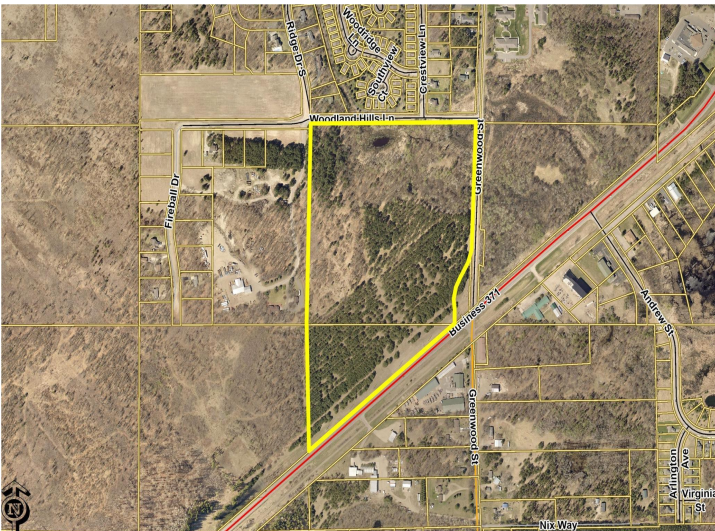
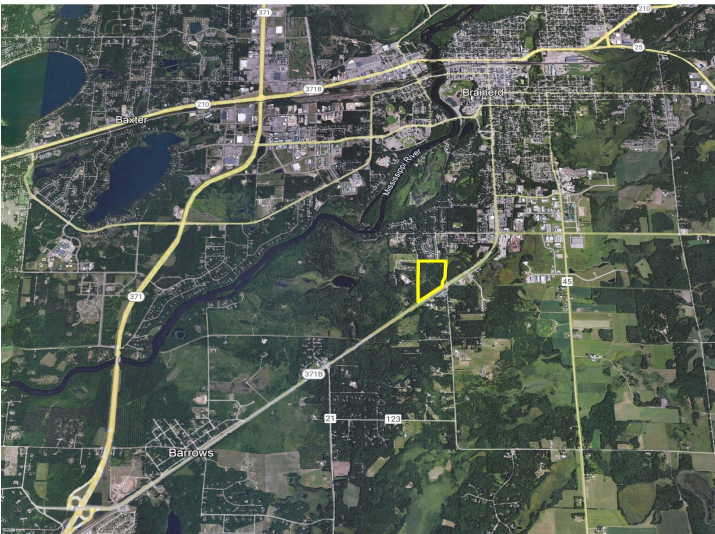
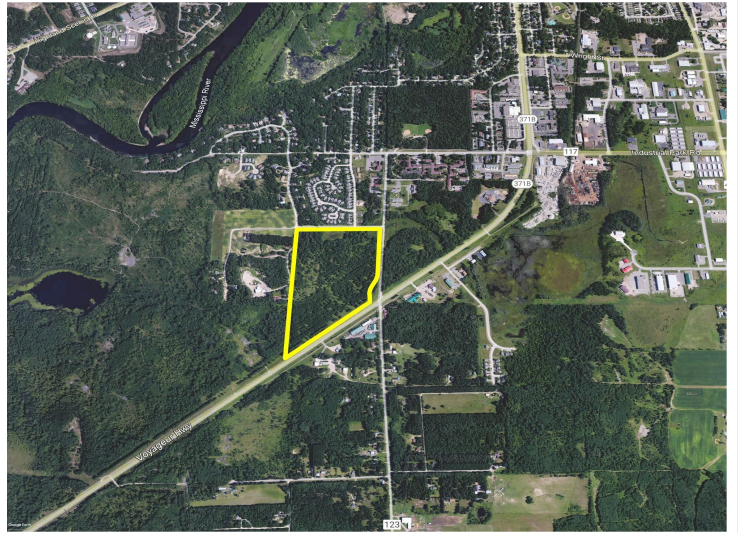
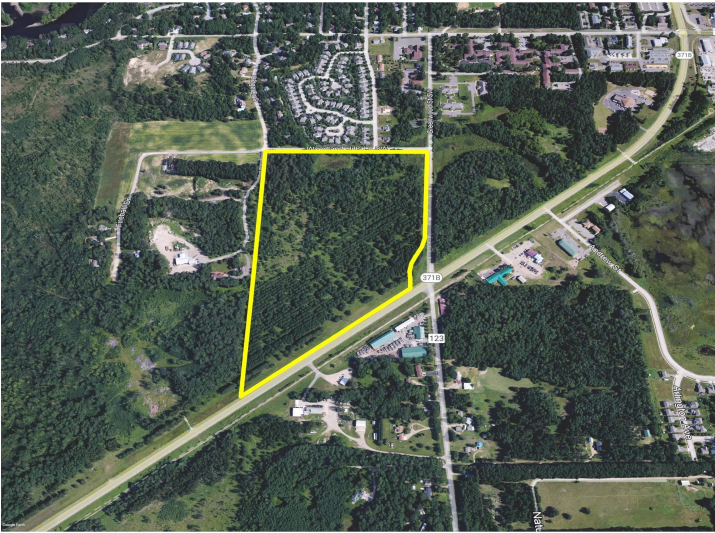
218-237-3333

info@affinityrealestate.com

MLS



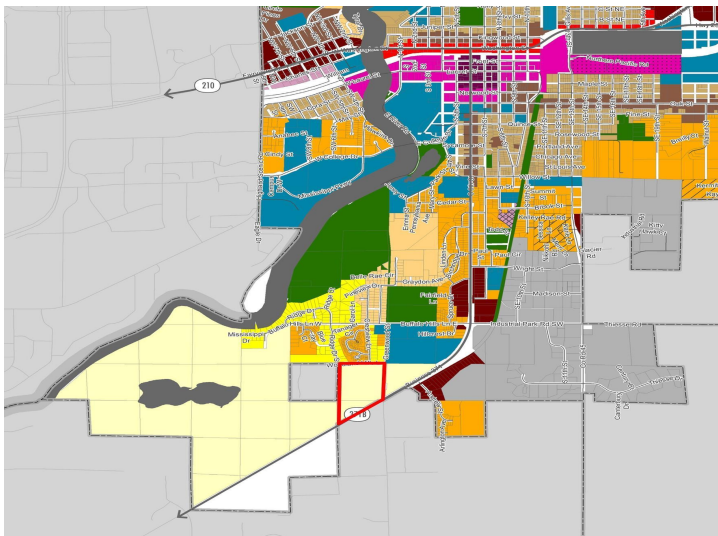
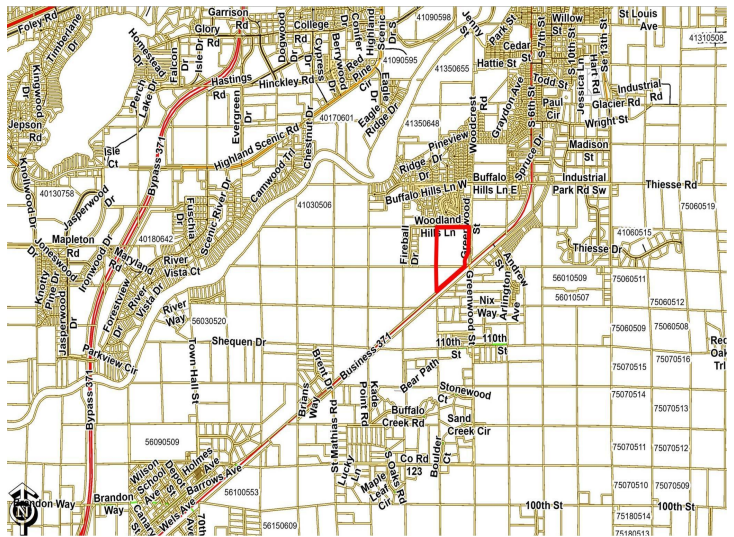
Affinity Real Estate - 600 Park Avenue South - Park Rapids MN 56470



website: www.AffinityRealEstate.com | email: info@affinityrealestate.com | office: 218-237-3333 | fax: 218-237-3377



\$549,000
MLS 6250084 Land
0 Business Hwy 371
Brainerd MN 56401



Page 3 of 3