



MLS 6257762 Lake Land

**\$69,900**

**Description:**

Located off a paved county road provides easy access year-round to this building lot. The grounds offer a stand of mature pine, gradual elevation to the lake, and a level building site with 236 feet of shore along the OHW line with 4.7 acres of land.

**Additional Details:**

Lot Acres	4.74
Lot Dimensions	236x347x906x224x637
School District	118
Taxes	\$240
Taxes with Assessments	\$306
Tax Year	2024

**Additional Features:**

**Driving Directions:**

From Longville - MN-84 north. Crossover MN-200 and continue north on CR-8 to 7376 County 8 NE until new road is constructed.

New road will not appear on GPS.



Listed By:  
Heartland Real Estate

Affinity Real Estate Inc. participates in the Regional Multiple Listing Service of Minnesota, Inc Broker Reciprocity (sm) program, allowing us to display other broker's listings on our website. All properties are subject to prior sale, change or withdrawal.



**Call Affinity Real Estate**

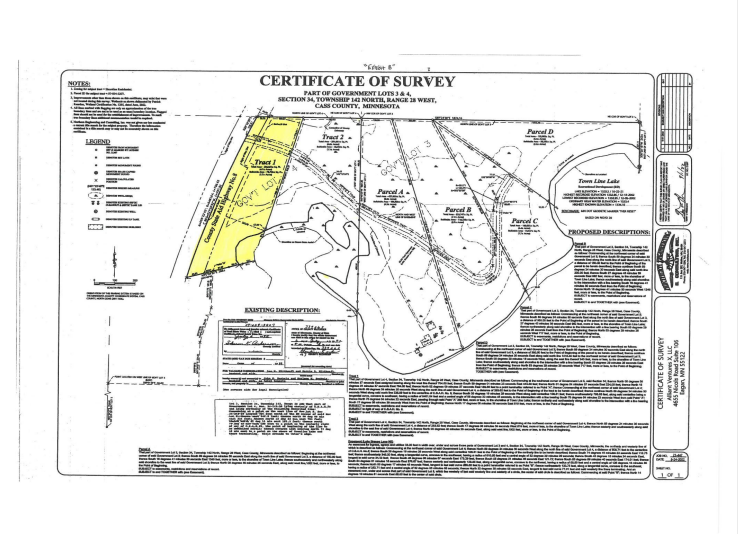
**218-237-3333**

**info@affinityrealestate.com**



**Affinity Real Estate - 600 Park Avenue South - Park Rapids MN 56470**





website: [www.AffinityRealEstate.com](http://www.AffinityRealEstate.com) | email: [info@affinityrealestate.com](mailto:info@affinityrealestate.com) | office: 218-237-3333 | fax: 218-237-3377



**\$69,900**  
 MLS 6257762 Lake Land  
 Tract 1 Lake Breeze Lane  
 Longville MN 56655