



MLS 6260464 Lake Land

\$159,900

Description:

This level lot provides easy access to shores of Town Line Lake. Into gardening? Near this building site is the location of the former owner's garden area where with a lake pump one can easily water your future harvest with nutrients from the lake. With over 676 feet of shoreline and 4.3 acres of nicely wooded grounds, this is the perfect lot for your homestead or weekend retreat.

Additional Details:

Lot Acres	4.35
Lot Dimensions	676x1018xx716
School District	118
Taxes	\$582
Taxes with Assessments	\$582
Tax Year	2024

Additional Features:

Driving Directions:

From Longville - MN-84 north. Crossover MN-200 and continue north on CR-8 to 7376 County 8 NE until new road is constructed.

New road will not appear on GPS.



Listed By:
Heartland Real Estate

Affinity Real Estate Inc. participates in the Regional Multiple Listing Service of Minnesota, Inc Broker Reciprocity (sm) program, allowing us to display other broker's listings on our website. All properties are subject to prior sale, change or withdrawal.



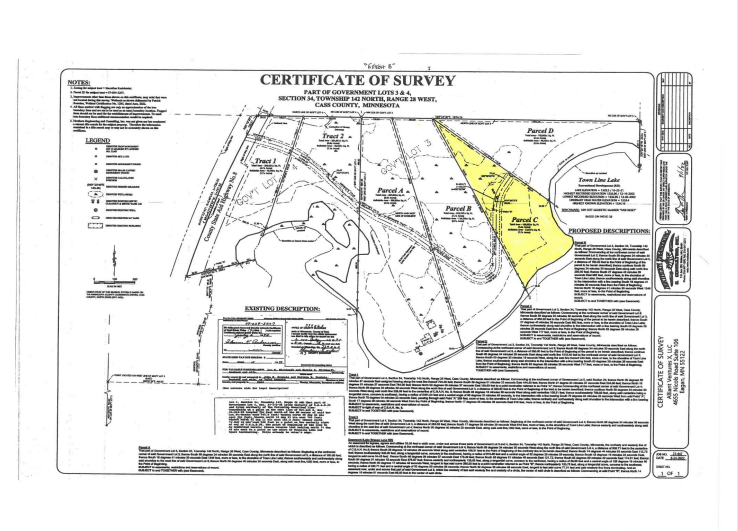
Call Affinity Real Estate

218-237-3333

info@affinityrealestate.com



Affinity Real Estate - 600 Park Avenue South - Park Rapids MN 56470



website: www.AffinityRealEstate.com | email: info@affinityrealestate.com | office: 218-237-3333 | fax: 218-237-3377



\$159,900
 MLS 6260464 Lake Land
 Parcel C Lake Breeze Lane
 Longville MN 56655