



MLS 6261470 Commercial Sale

**\$3,000**

**Description:**

Gorgeous open office space at North end of Bemidji. Located conveniently behind Home Depot in the Westridge Commerce Center. Set up with two private offices with the balance open for cubes, or an open office concept. Large, clean bathrooms and a full breakroom shared with another tenant. Gross Lease; rate includes taxes, CAM, heat, electric, w/s/g. SF appx 1910 PLUS shared breakroom and bathrooms.

**Additional Details:**

Year Built	2006
Lot Acres	1.42
Lot Dimensions	192 x 604
School District	31
Taxes	\$19,930
Taxes with Assessments	\$19,930
Tax Year	2021

**Additional Features:**

**Fuel:** Natural Gas **Heat:** Forced Air

**Driving Directions:**

From intersection of Paul Bunyan Drive NW and Middle School Road (Home Culver's and Walmart), go South on Middle School Drive 1/4 mile, Right on 24th Street (Behind Home Depot) to property on left.



Listed By:  
Lake-N-Woods Realty, Inc.

Affinity Real Estate Inc. participates in the Regional Multiple Listing Service of Minnesota, Inc Broker Reciprocity (sm) program, allowing us to display other broker's listings on our website. All properties are subject to prior sale, change or withdrawal.



**Call Affinity Real Estate**

**218-237-3333**

**info@affinityrealestate.com**



**Affinity Real Estate - 600 Park Avenue South - Park Rapids MN 56470**



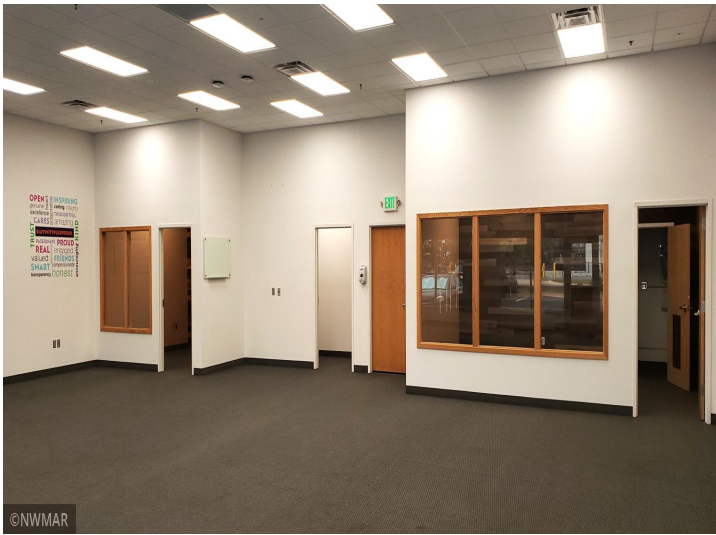


website: [www.AffinityRealEstate.com](http://www.AffinityRealEstate.com) | email: [info@affinityrealestate.com](mailto:info@affinityrealestate.com) | office: 218-237-3333 | fax: 218-237-3377

**Affinity**  
REAL ESTATE INC

**\$3,000**  
MLS 6261470 Commercial  
Sale  
2300 24th Street  
Bemidji MN 56601





website: [www.AffinityRealEstate.com](http://www.AffinityRealEstate.com) | email: [info@affinityrealestate.com](mailto:info@affinityrealestate.com) | office: 218-237-3333 | fax: 218-237-3377



**\$3,000**  
 MLS 6261470 Commercial  
 Sale  
 2300 24th Street  
 Bemidji MN 56601