



MLS 6264550 Lake Home

**\$475,000**

2,968 sq ft  
3 bedrooms  
3 baths

413 Bay Drive  
Longville MN 56655

Waterfront: Mule Lake (11020000)

Status: Hold

**Description:**

Beautiful, year-round, 3 bedroom, 3 bathroom, walk out rambler with views overlooking Mule Lake at undeveloped lakeshore, never to be developed. This property has over 2 acres and 150' of private lakeshore, located on a dead end, township road. Master suite, 2nd bdrm. , year round sun room, and laundry all on main floor. Roomy 3 car garage with attic storage is located across low traffic, dead end road. Great privacy, with paved driveways and mature hardwoods.

**Additional Details:**

Year Built	1989
Lot Acres	2.2
Lot Dimensions	150x502x265x460
Garage Stalls	3
School District	118
Taxes	\$1,944
Taxes with Assessments	\$1,944
Tax Year	2023

**Additional Features:**

**Basement:** Block, Daylight/Lookout Windows, Egress Window(s), Full, Partially Finished, Walkout **Fuel:** Electric, Propane **Garage:** 3 **Heat:** Baseboard, Dual, Forced Air, Fireplace(s) **Sewer:** Private Sewer, Tank with Drainage Field **Water:** Submersible - 4 Inch, Drilled, Private, Well **Air Conditioning:** Central Air

**Driving Directions:**

From Longville: go south on MN 84 for 5.4 miles, turn left onto N Bay Dr. NE for 0.3 miles, home is on the right side of the road.



Listed By:  
Bill Hansen Realty/Longville

Affinity Real Estate Inc. participates in the Regional Multiple Listing Service of Minnesota, Inc Broker Reciprocity (sm) program, allowing us to display other broker's listings on our website. All properties are subject to prior sale, change or withdrawal.



Call Affinity Real Estate

**218-237-3333**

[info@affinityrealestate.com](mailto:info@affinityrealestate.com)



Affinity Real Estate - 600 Park Avenue South - Park Rapids MN 56470



website: [www.AffinityRealEstate.com](http://www.AffinityRealEstate.com) | email: [info@affinityrealestate.com](mailto:info@affinityrealestate.com) | office: 218-237-3333 | fax: 218-237-3377

**Affinity**  
REAL ESTATE INC

**\$475,000**  
MLS 6264550 Lake Home  
413 Bay Drive  
Longville MN 56655



website: [www.AffinityRealEstate.com](http://www.AffinityRealEstate.com) | email: [info@affinityrealestate.com](mailto:info@affinityrealestate.com) | office: 218-237-3333 | fax: 218-237-3377

**Affinity**  
REAL ESTATE INC

**\$475,000**  
MLS 6264550 Lake Home  
413 Bay Drive  
Longville MN 56655



website: [www.AffinityRealEstate.com](http://www.AffinityRealEstate.com) | email: [info@affinityrealestate.com](mailto:info@affinityrealestate.com) | office: 218-237-3333 | fax:218-237-3377



**\$475,000**  
MLS 6264550 Lake Home  
413 Bay Drive  
Longville MN 56655



website: [www.AffinityRealEstate.com](http://www.AffinityRealEstate.com) | email: [info@affinityrealestate.com](mailto:info@affinityrealestate.com) | office: 218-237-3333 | fax:218-237-3377

**Affinity**  
REAL ESTATE INC

**\$475,000**  
MLS 6264550 Lake Home  
413 Bay Drive  
Longville MN 56655



website: [www.AffinityRealEstate.com](http://www.AffinityRealEstate.com) | email: [info@affinityrealestate.com](mailto:info@affinityrealestate.com) | office: 218-237-3333 | fax:218-237-3377



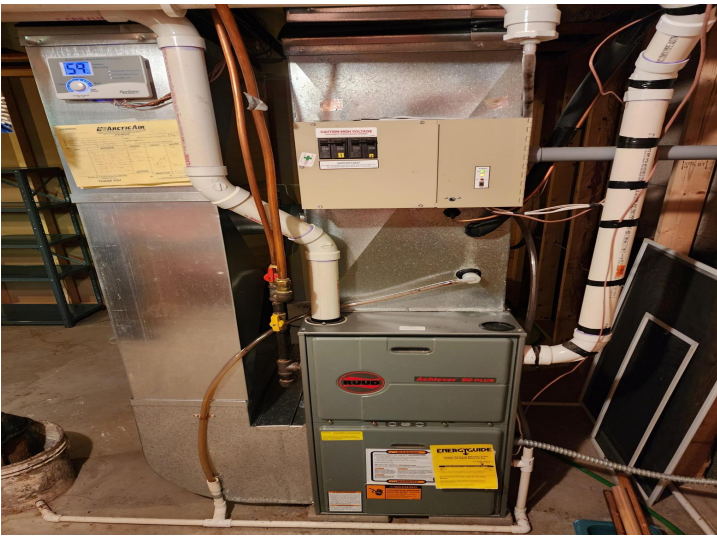
**\$475,000**  
MLS 6264550 Lake Home  
413 Bay Drive  
Longville MN 56655



website: [www.AffinityRealEstate.com](http://www.AffinityRealEstate.com) | email: [info@affinityrealestate.com](mailto:info@affinityrealestate.com) | office: 218-237-3333 | fax:218-237-3377



**\$475,000**  
MLS 6264550 Lake Home  
413 Bay Drive  
Longville MN 56655



website: [www.AffinityRealEstate.com](http://www.AffinityRealEstate.com) | email: [info@affinityrealestate.com](mailto:info@affinityrealestate.com) | office: 218-237-3333 | fax:218-237-3377

**Affinity**  
REAL ESTATE INC

**\$475,000**  
MLS 6264550 Lake Home  
413 Bay Drive  
Longville MN 56655