



MLS 6273536 Lake Home

\$219,000

287 sq ft
1 bedrooms
0 baths

9135 Bend Lane
Motley MN 56466

Waterfront: Crow Wing River

Status: Closed

Description:

Enjoy one of the best Crow Wing River views with 735' of river frontage situated on 11 acres of privacy. Use your personal creativity to update a quaint rustic cabin or build your dream retreat overlooking the river. Trails, wildlife, privacy, and the Crow Wing River, known for its clear water & one of the best wilderness routes for canoeing/kayaking. This property abuts another 77-acre multi-use retreat with additional river frontage.

Additional Details:

Year Built	1940
Lot Acres	11.09
Lot Dimensions	661x875x735x720
School District	2170
Taxes	\$930
Taxes with Assessments	\$996
Tax Year	2022

Additional Features:

Fuel: Electric **Heat:** Wood Stove

Driving Directions:

From Hwy 10 go north on 83 for 1.2 miles to right on CR 33 for .8 miles to left on CR 32 for 2.8 miles to left on Snake Trail to Bend Ln. At the for sale sign take a right until you see the arrow sign to the trail in the woods.



Listed By:
Coldwell Banker Realty

Affinity Real Estate Inc. participates in the Regional Multiple Listing Service of Minnesota, Inc Broker Reciprocity (sm) program, allowing us to display other broker's listings on our website. All properties are subject to prior sale, change or withdrawal.



Call Affinity Real Estate

218-237-3333

info@affinityrealestate.com



Affinity Real Estate - 600 Park Avenue South - Park Rapids MN 56470



website: www.AffinityRealEstate.com | email: info@affinityrealestate.com | office: 218-237-3333 | fax: 218-237-3377



\$219,000
MLS 6273536 Lake Home
9135 Bend Lane
Motley MN 56466



website: www.AffinityRealEstate.com | email: info@affinityrealestate.com | office: 218-237-3333 | fax: 218-237-3377



\$219,000
MLS 6273536 Lake Home
9135 Bend Lane
Motley MN 56466



website: www.AffinityRealEstate.com | email: info@affinityrealestate.com | office: 218-237-3333 | fax: 218-237-3377



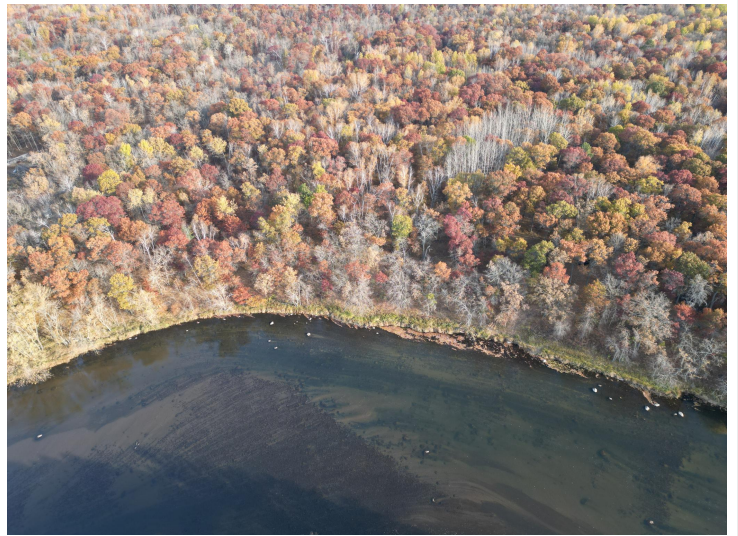
\$219,000
 MLS 6273536 Lake Home
 9135 Bend Lane
 Motley MN 56466



website: www.AffinityRealEstate.com | email: info@affinityrealestate.com | office: 218-237-3333 | fax: 218-237-3377



\$219,000
MLS 6273536 Lake Home
9135 Bend Lane
Motley MN 56466



website: www.AffinityRealEstate.com | email: info@affinityrealestate.com | office: 218-237-3333 | fax: 218-237-3377



\$219,000
 MLS 6273536 Lake Home
 9135 Bend Lane
 Motley MN 56466



website: www.AffinityRealEstate.com | email: info@affinityrealestate.com | office: 218-237-3333 | fax: 218-237-3377



\$219,000
MLS 6273536 Lake Home
9135 Bend Lane
Motley MN 56466