



MLS 6273728 Land

\$1,500,000

21.8 Acres

Raw Land

21.8 AC Hwy 371

Brainerd MN 56401

Status: Active

Description:

Excellent opportunity to purchase 5.3 acres up to 21 acres of commercial land located along the Hwy 371 corridor, just north of Brainerd International Raceway. This is an ideal development site for retail, storage, warehouse and outdoor display with prime highway visibility and multiple highway access points. Subject to Platting.

Additional Details:

Lot Acres	21.8
Lot Dimensions	1725xIrregular
School District	181
Taxes	(unreported)
Taxes with Assessments	(unreported)
Tax Year	2025

Additional Features:

Driving Directions:

From the Baxter Hwy 371 / Hwy 210 stoplight intersection - North on Hwy 371 approx. 6.5 miles - Property is on the East side of Hwy 371, just south of White Gables Road



Listed By:
Close-Converse Commercial Prop

Affinity Real Estate Inc. participates in the Regional Multiple Listing Service of Minnesota, Inc Broker Reciprocity (sm) program, allowing us to display other broker's listings on our website. All properties are subject to prior sale, change or withdrawal.



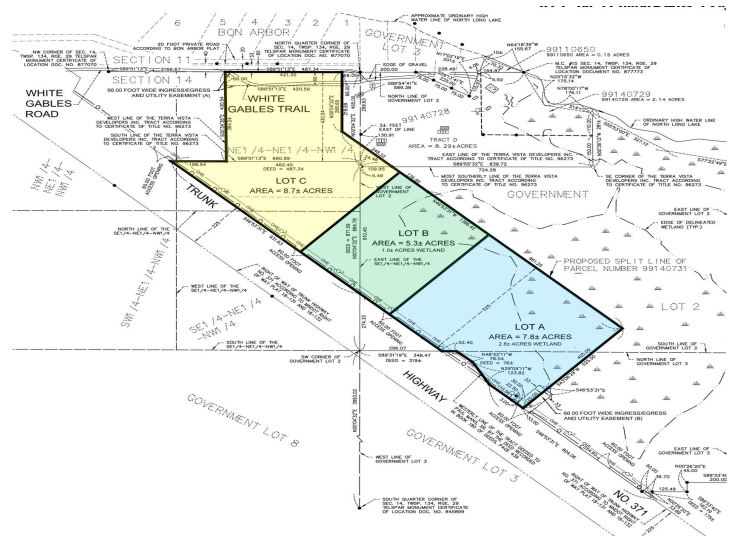
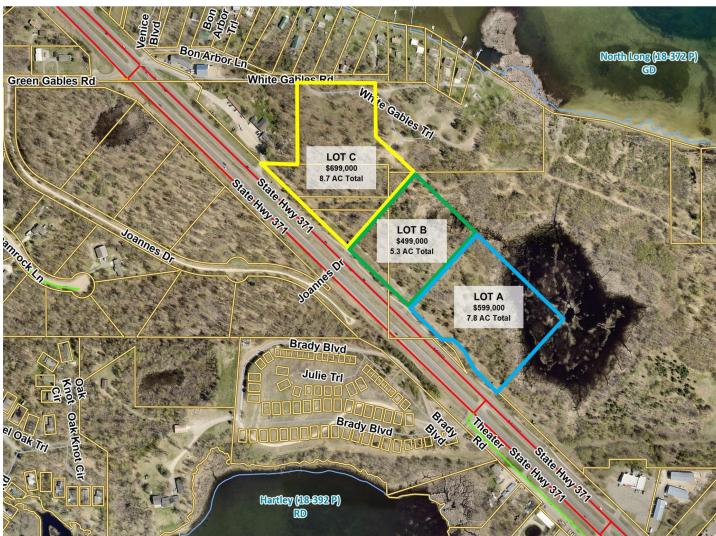
Call Affinity Real Estate

218-237-3333

info@affinityrealestate.com



Affinity Real Estate - 600 Park Avenue South - Park Rapids MN 56470



website: www.AffinityRealEstate.com | email: info@affinityrealestate.com | office: 218-237-3333 | fax: 218-237-3377



\$1,500,000
 MLS 6273728 Land
 21.8 AC Hwy 371
 Brainerd MN 56401