



MLS 6309216 Lake Home

\$815,000

2,686 sq ft
4 bedrooms
4 baths

TBD L1 B1 Lost Lake Road
Nisswa MN 56468

Waterfront: Spider Lake (Lake
Shore City)

Status: Canceled

Description:

Model Now Under Construction - Gull Lake Chain of Lake's new lake home community is now started. We are now securing lots and are building. Spider Lake Preserve is a private single-family lake home community with only 9 lake homes in the City of Lake Shore. Nestled amongst Lost Lake Lodge, Causeway on Gull, Bar Harbor, Zorbaz, numerous golf courses, and much more. Along with being in the heart of Gull Lake's activities and amenities, this private community has its own dock area, lake side patio and firepit area, pickleball court, private crushed granite path system and fine homes built by Thomas Allen Homes. This community embraces nature and is very pristine. Several floor plans with multiple options. All plans include main level living with optional walkout LL or upper level. This plan is a 4bd/4ba slab on grade, front porch, vaulted ceilings, amazing main lvl floor plan, amazing upper w/private suite, FR, 2nd laundry. Lake homes range from 650k-950k. See you on Gull Lake Chain!

Additional Details:

Year Built	2022
Lot Acres	0.12
Lot Dimensions	64x83 Build Pad
Garage Stalls	3
School District	181
Taxes	(unreported)
Taxes with Assessments	(unreported)
Tax Year	2022

Additional Features:

Basement: Slab **Fuel:** Natural Gas **Garage:** 3 **Heat:** Forced Air **Sewer:** City Sewer/Connected **Water:** Shared System, Well **Air Conditioning:** Central Air

Driving Directions:

From Highway 371 in Nisswa, take Country Rd 77 West to Zorbaz. Turn Right on Lost Lake Road to Community on your right.



Listed By:
Edina Realty, Inc.

Affinity Real Estate Inc. participates in the Regional Multiple Listing Service of Minnesota, Inc Broker Reciprocity (sm) program, allowing us to display other broker's listings on our website. All properties are subject to prior sale, change or withdrawal.



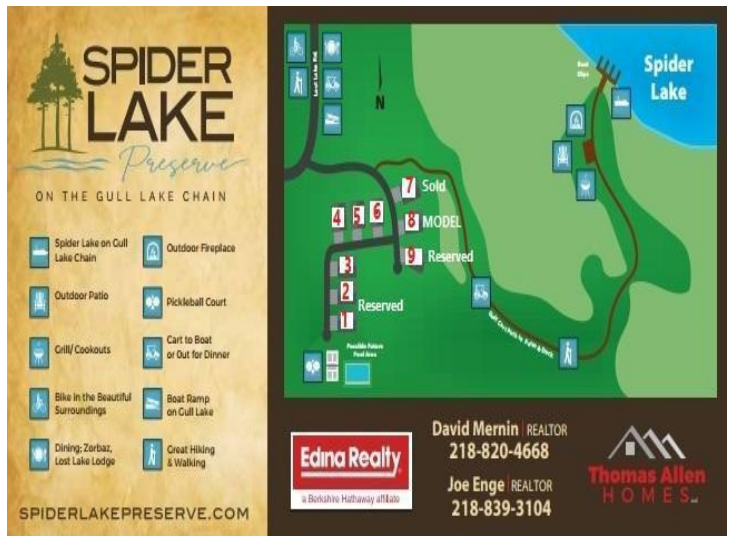
Call Affinity Real Estate

218-237-3333

info@affinityrealestate.com



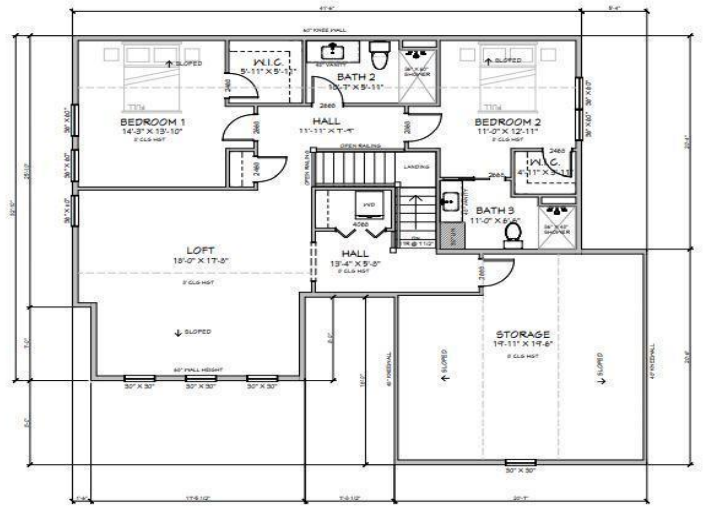
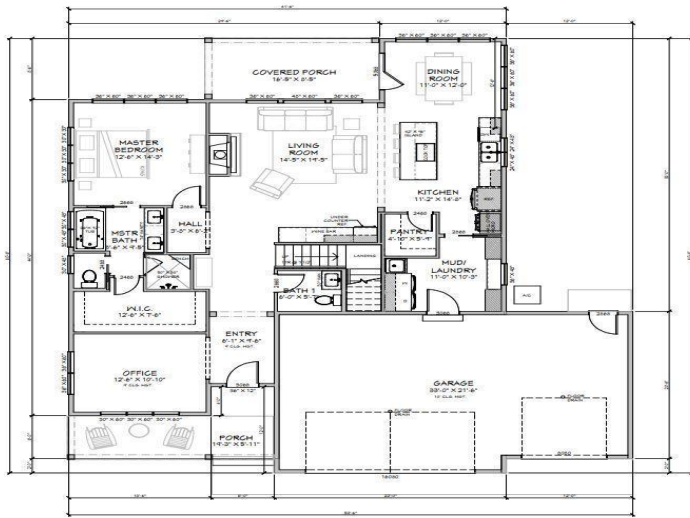
Affinity Real Estate - 600 Park Avenue South - Park Rapids MN 56470



website: www.AffinityRealEstate.com | email: info@affinityrealestate.com | office: 218-237-3333 | fax: 218-237-3377



\$815,000
 MLS 6309216 Lake Home
 TBD L1 B1 Lost Lake Road
 Nisswa MN 56468



ELEVATION
VIEW OF LEFT



ELEVATION
VIEW OF RIGHT



ELEVATION
VIEW OF BACK



website: www.AffinityRealEstate.com | email: info@affinityrealestate.com | office: 218-237-3333 | fax: 218-237-3377

Affinity
REAL ESTATE INC

\$815,000
MLS 6309216 Lake Home
TBD L1 B1 Lost Lake Road
Nisswa MN 56468



Patio and fire pit area at dock area - spring 2023 completion



Crushed granite path from lake homes to patio & dock area - late fall 2022 completion



website: www.AffinityRealEstate.com | email: info@affinityrealestate.com | office: 218-237-3333 | fax: 218-237-3377

Affinity
REAL ESTATE INC

\$815,000

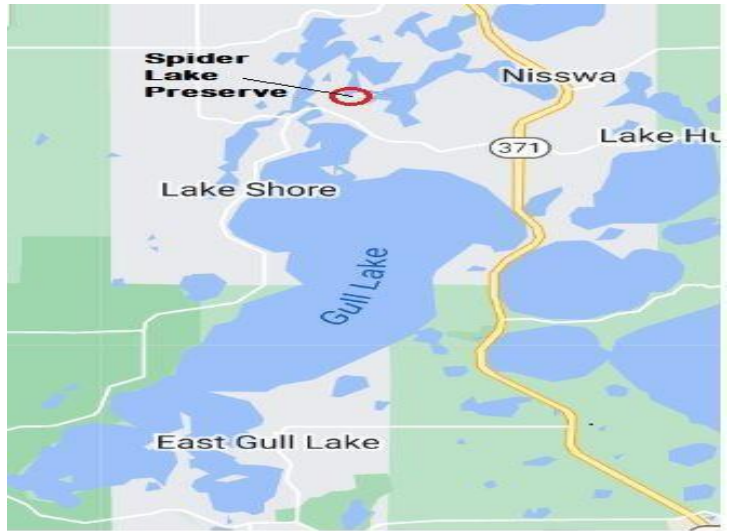
MLS 6309216 Lake Home
TBD L1 B1 Lost Lake Road
Nisswa MN 56468

SPIDER LAKE

Preserve

ON THE GULL LAKE CHAIN

- | | |
|--|--|
|  Spider Lake on Gull Lake Chain |  Outdoor Fireplace |
|  Outdoor Patio |  Pickleball Court |
|  Grill/ Cookouts |  Cart to Boat or Out for Dinner |
|  Bike in the Beautiful Surroundings |  Boat Ramp on Gull Lake |
|  Dining; Zorbaz, Lost Lake Lodge |  Great Hiking & Walking |

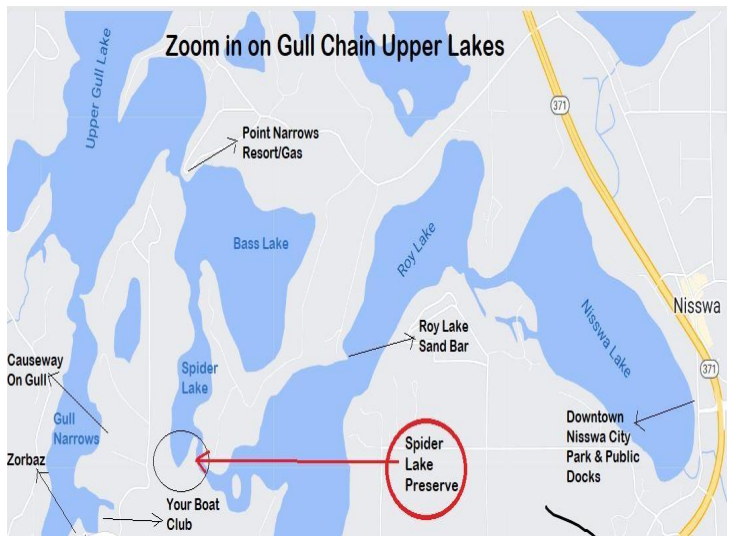


website: www.AffinityRealEstate.com | email: info@affinityrealestate.com | office: 218-237-3333 | fax: 218-237-3377

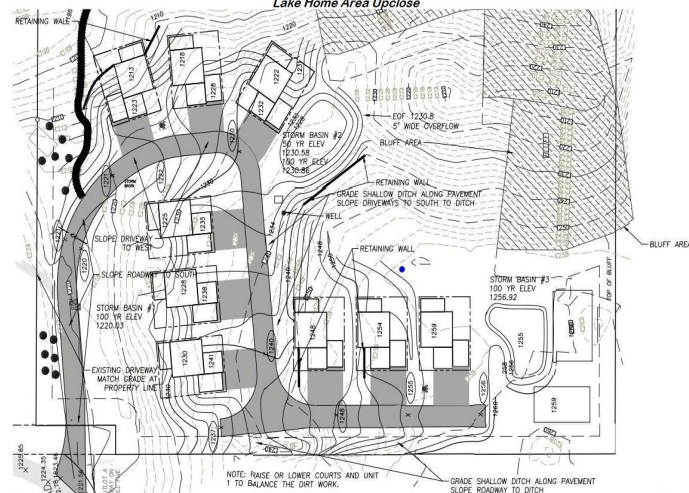
Affinity
REAL ESTATE INC

\$815,000

MLS 6309216 Lake Home
TBD L1 B1 Lost Lake Road
Nisswa MN 56468



Spider Lake Preserve
Lake Home Area Upclose



website: www.AffinityRealEstate.com | email: info@affinityrealestate.com | office: 218-237-3333 | fax: 218-237-3377



\$815,000
MLS 6309216 Lake Home
TBD L1 B1 Lost Lake Road
Nisswa MN 56468