



MLS 6311134 Lake Home

\$600,000

1,200 sq ft
1 bedrooms
0 baths

26403 238th Street
Verndale MN 56481

Waterfront: Crow Wing River

Status: Canceled

Description:

Once in a lifetime opportunity to purchase a one-of-a-kind property that seldom becomes available on the open market. NEARLY A MILE AND A HALF OF CROW WING RIVER FRONTAGE! Tucked in on over 86 very private acres to explore, this is a nature lover and hunters' absolute dream. Abundant wildlife makes for excellent hunting opportunities. The property consists of established trails to access several permanent enclosed deer stands or just sit at your favorite spot up on a ridge and listen to the relaxing sounds of the river flowing and take in the breathtaking views. Improvements include a cabin, a 36X48 pole building and 2 storage utility sheds. There are many other building area possibilities on the property if desired. Well and electric are in place. Seize this unique and special chance to own a wilderness river property.

Additional Details:

Year Built	2005
Lot Acres	86.05
Lot Dimensions	getting
Garage Stalls	2
School District	2170
Taxes	\$3,560
Taxes with Assessments	\$3,560
Tax Year	2022

Additional Features:

Basement: None **Fuel:** Electric, Wood **Garage:** 2 **Heat:** Wood Stove **Sewer:** Outhouse **Water:** Private, Sand Point, Well **Air Conditioning:** None

Driving Directions:

From Staples take Co Rd 30 and Co Rd 7 to 238th St on the left about 16.2 miles from Staples. Property is at the end of the street. Follow signs



Listed By:
Gallery of Homes

Affinity Real Estate Inc. participates in the Regional Multiple Listing Service of Minnesota, Inc Broker Reciprocity (sm) program, allowing us to display other broker's listings on our website. All properties are subject to prior sale, change or withdrawal.



Call Affinity Real Estate

218-237-3333

info@affinityrealestate.com



Affinity Real Estate - 600 Park Avenue South - Park Rapids MN 56470



website: www.AffinityRealEstate.com | email: info@affinityrealestate.com | office: 218-237-3333 | fax: 218-237-3377



\$600,000

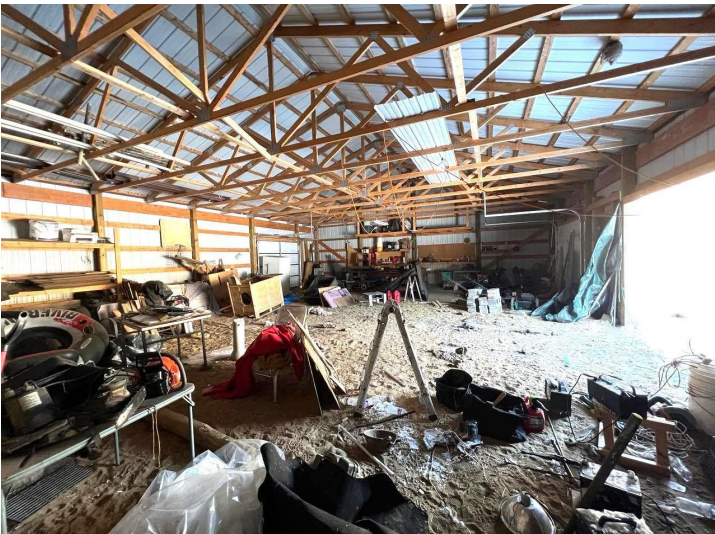
MLS 6311134 Lake Home
26403 238th Street
Verndale MN 56481



website: www.AffinityRealEstate.com | email: info@affinityrealestate.com | office: 218-237-3333 | fax: 218-237-3377



\$600,000
 MLS 6311134 Lake Home
 26403 238th Street
 Verndale MN 56481



website: www.AffinityRealEstate.com | email: info@affinityrealestate.com | office: 218-237-3333 | fax: 218-237-3377

Affinity
REAL ESTATE INC

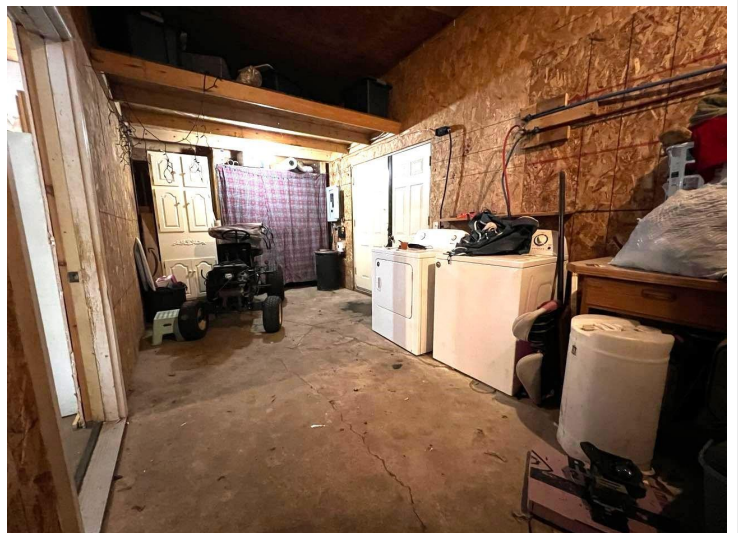
\$600,000
MLS 6311134 Lake Home
26403 238th Street
Verndale MN 56481



website: www.AffinityRealEstate.com | email: info@affinityrealestate.com | office: 218-237-3333 | fax: 218-237-3377



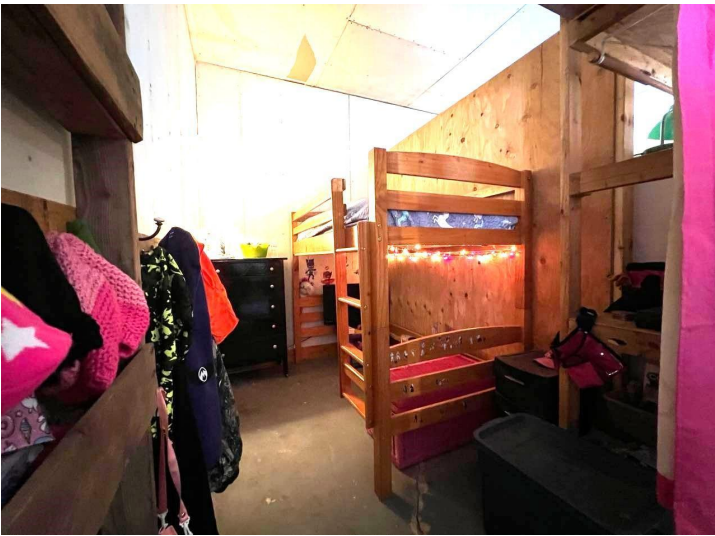
\$600,000
 MLS 6311134 Lake Home
 26403 238th Street
 Verndale MN 56481



website: www.AffinityRealEstate.com | email: info@affinityrealestate.com | office: 218-237-3333 | fax: 218-237-3377

Affinity
REAL ESTATE INC

\$600,000
MLS 6311134 Lake Home
26403 238th Street
Verndale MN 56481



website: www.AffinityRealEstate.com | email: info@affinityrealestate.com | office: 218-237-3333 | fax: 218-237-3377

Affinity
REAL ESTATE INC

\$600,000

MLS 6311134 Lake Home
26403 238th Street
Verndale MN 56481



website: www.AffinityRealEstate.com | email: info@affinityrealestate.com | office: 218-237-3333 | fax: 218-237-3377



\$600,000

MLS 6311134 Lake Home
26403 238th Street
Verndale MN 56481