



MLS 6315232 Lake Home

\$359,900

2,064 sq ft
3 bedrooms
2 baths

3692 Maple Drive
Hackensack MN 56452

Waterfront: Trillium

Status: Hold

Description:

Private, well maintained year-round home with mother in law apartment on Trillium Lake just east of Hackensack. The home features three bedrooms, two baths, mother in law suite in finished walkout basement, custom wood work and storage thru-out. Living room has a wood burning brick fireplace, lower level family room has wood burning stove with brick surround, dual-fuel/off-peak heat and many updates including a newer flooring. Plus detached garage, bunk house and blacktop drive.

Additional Details:

Year Built	1985
Lot Acres	1.2
Lot Dimensions	203x261x65x205x270
Garage Stalls	2
School District	113
Taxes	\$1,104
Taxes with Assessments	\$1,104
Tax Year	2022

Additional Features:

Fuel: Electric, Propane, Wood **Heat:** Baseboard, Forced Air, Fireplace(s)

Driving Directions:

From the corner of Hwy 371 & County Rd 5 in Hackensack, take County Rd 5 east for 6.8 miles to Maple Drive NW on the right. Go to the house #3692 with sign.



Listed By:
eXp Realty

Affinity Real Estate Inc. participates in the Regional Multiple Listing Service of Minnesota, Inc Broker Reciprocity (sm) program, allowing us to display other broker's listings on our website. All properties are subject to prior sale, change or withdrawal.



Call Affinity Real Estate

218-237-3333

info@affinityrealestate.com



Affinity Real Estate - 600 Park Avenue South - Park Rapids MN 56470



website: www.AffinityRealEstate.com | email: info@affinityrealestate.com | office: 218-237-3333 | fax:218-237-3377

Affinity
REAL ESTATE INC

\$359,900
MLS 6315232 Lake Home
3692 Maple Drive
Hackensack MN 56452



website: www.AffinityRealEstate.com | email: info@affinityrealestate.com | office: 218-237-3333 | fax:218-237-3377

Affinity
REAL ESTATE INC

\$359,900
MLS 6315232 Lake Home
3692 Maple Drive
Hackensack MN 56452



website: www.AffinityRealEstate.com | email: info@affinityrealestate.com | office: 218-237-3333 | fax:218-237-3377

Affinity
REAL ESTATE INC

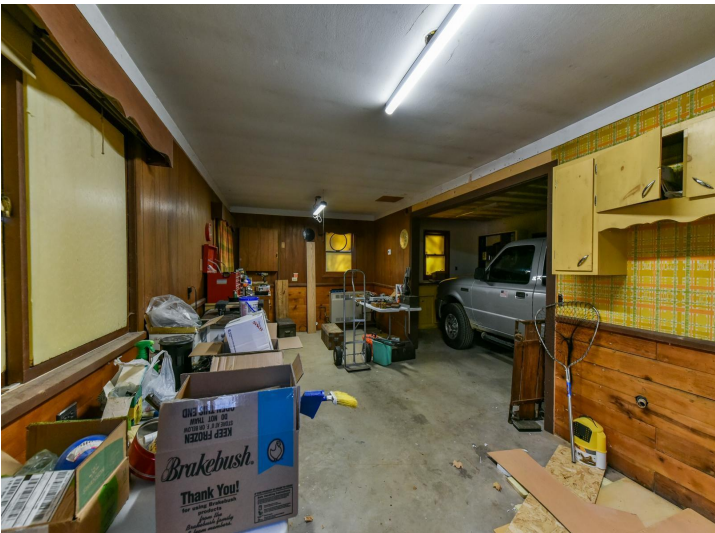
\$359,900
MLS 6315232 Lake Home
3692 Maple Drive
Hackensack MN 56452



website: www.AffinityRealEstate.com | email: info@affinityrealestate.com | office: 218-237-3333 | fax: 218-237-3377

Affinity
REAL ESTATE INC

\$359,900
MLS 6315232 Lake Home
3692 Maple Drive
Hackensack MN 56452



website: www.AffinityRealEstate.com | email: info@affinityrealestate.com | office: 218-237-3333 | fax: 218-237-3377

Affinity
REAL ESTATE INC

\$359,900
MLS 6315232 Lake Home
3692 Maple Drive
Hackensack MN 56452



website: www.AffinityRealEstate.com | email: info@affinityrealestate.com | office: 218-237-3333 | fax: 218-237-3377

Affinity
REAL ESTATE INC

\$359,900
MLS 6315232 Lake Home
3692 Maple Drive
Hackensack MN 56452



website: www.AffinityRealEstate.com | email: info@affinityrealestate.com | office: 218-237-3333 | fax:218-237-3377



\$359,900
MLS 6315232 Lake Home
3692 Maple Drive
Hackensack MN 56452