

MLS 6317090 Lake Home

\$439,000

4,536 sq ft
1 bedrooms
6 baths

34382 Co 38
Laporte MN 56461

Waterfront: Kabekona River

Status: Expired

Description:

Beautiful and peaceful location with deeded river access! Large Corner parcel (2.93 acres) can be used for Residential or Commercial. Small living quarters off of the back of the building. This property could be remodeled into a large home, turned into an RV park, potential for cafe or retail... Deeded harbor access on the Kabekona river steps away. Paul Bunyan Trail very nearby too! Beautiful level lot partially wooded and partially open. Traffic count on 200 is 1709 a day as per MNDOT 2021. 10 minutes drive to Walker and 30 Minutes to Bemidji!

Additional Details:

Year Built	1978
Lot Acres	2.93
Lot Dimensions	315x415x296x408
Garage Stalls	4
School District	113
Taxes	\$2,110
Taxes with Assessments	\$2,110
Tax Year	2022

Additional Features:

Basement: None **Fuel:** Electric, Propane **Garage:** 4 **Heat:** Forced Air **Sewer:** Private Sewer **Water:** Well **Air Conditioning:** Wall Unit(s)

Driving Directions:

200 east of 371 to County 38 (Benedict)



Listed By:
Headwaters Realty Services

Affinity Real Estate Inc. participates in the Regional Multiple Listing Service of Minnesota, Inc Broker Reciprocity (sm) program, allowing us to display other broker's listings on our website. All properties are subject to prior sale, change or withdrawal.



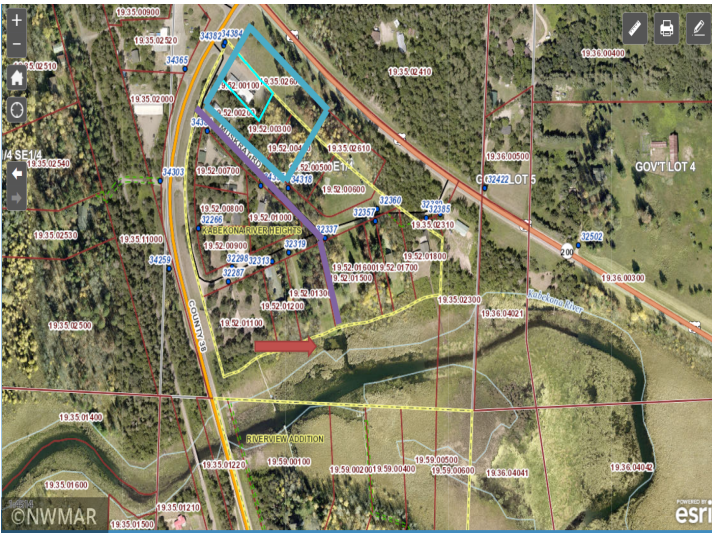
Call Affinity Real Estate

218-237-3333

info@affinityrealestate.com



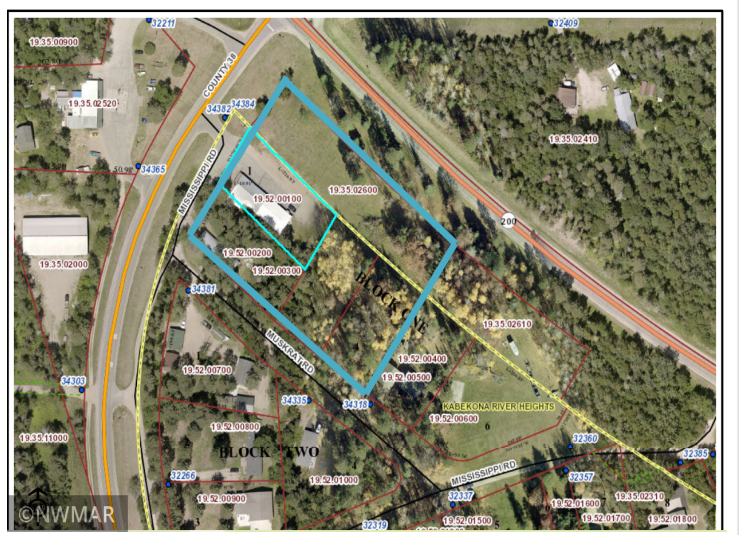
Affinity Real Estate - 600 Park Avenue South - Park Rapids MN 56470



website: www.AffinityRealEstate.com | email: info@affinityrealestate.com | office: 218-237-3333 | fax: 218-237-3377

Affinity
REAL ESTATE INC

\$439,000
MLS 6317090 Lake Home
34382 Co 38
Laporte MN 56461



website: www.AffinityRealEstate.com | email: info@affinityrealestate.com | office: 218-237-3333 | fax: 218-237-3377



\$439,000
 MLS 6317090 Lake Home
 34382 Co 38
 Laporte MN 56461



website: www.AffinityRealEstate.com | email: info@affinityrealestate.com | office: 218-237-3333 | fax: 218-237-3377



\$439,000
 MLS 6317090 Lake Home
 34382 Co 38
 Laporte MN 56461



website: www.AffinityRealEstate.com | email: info@affinityrealestate.com | office: 218-237-3333 | fax: 218-237-3377



\$439,000
 MLS 6317090 Lake Home
 34382 Co 38
 Laporte MN 56461



website: www.AffinityRealEstate.com | email: info@affinityrealestate.com | office: 218-237-3333 | fax:218-237-3377



\$439,000

MLS 6317090 Lake Home
34382 Co 38
Laporte MN 56461