



MLS 6318200 Commercial Sale

\$272,000

Description:

Very well maintained, clean 5-plex in a great location near BSU. Investors you can feel confident owning these apartments. There are 5 off street parking spots for tenants and lower storage units for reach tenant. The property is worth seeing in person! Call for your tour today.

Additional Details:

Year Built	1919
Lot Acres	0.22
Lot Dimensions	75x130
School District	31
Taxes	\$2,602
Taxes with Assessments	\$2,602
Tax Year	2022

Additional Features:

Fuel: Natural Gas **Heat:** Boiler **Sewer:** City Sewer/Connected **Water:** City Water/Connected

Driving Directions:

Irvine Ave to 15th Street. East on 15th Street. Property 309 15th Street on the north side of the road.



Listed By:
Better Homes and Gardens Real Estate First Choice

Affinity Real Estate Inc. participates in the Regional Multiple Listing Service of Minnesota, Inc Broker Reciprocity (sm) program, allowing us to display other broker's listings on our website. All properties are subject to prior sale, change or withdrawal.



Call Affinity Real Estate

218-237-3333

info@affinityrealestate.com



Affinity Real Estate - 600 Park Avenue South - Park Rapids MN 56470



website: www.AffinityRealEstate.com | email: info@affinityrealestate.com | office: 218-237-3333 | fax: 218-237-3377

Affinity
REAL ESTATE INC

\$272,000
MLS 6318200 Commercial
Sale
309 15th Street
Bemidji MN 56601



website: www.AffinityRealEstate.com | email: info@affinityrealestate.com | office: 218-237-3333 | fax: 218-237-3377

Affinity
REAL ESTATE INC

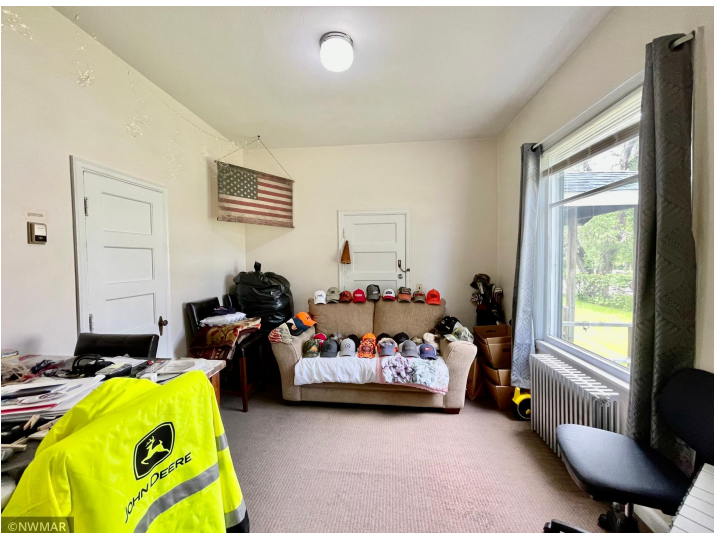
\$272,000
MLS 6318200 Commercial
Sale
309 15th Street
Bemidji MN 56601



website: www.AffinityRealEstate.com | email: info@affinityrealestate.com | office: 218-237-3333 | fax: 218-237-3377



\$272,000
MLS 6318200 Commercial
Sale
309 15th Street
Bemidji MN 56601



website: www.AffinityRealEstate.com | email: info@affinityrealestate.com | office: 218-237-3333 | fax: 218-237-3377

Affinity
REAL ESTATE INC

\$272,000
MLS 6318200 Commercial
Sale
309 15th Street
Bemidji MN 56601



website: www.AffinityRealEstate.com | email: info@affinityrealestate.com | office: 218-237-3333 | fax: 218-237-3377

Affinity
REAL ESTATE INC

\$272,000
MLS 6318200 Commercial
Sale
309 15th Street
Bemidji MN 56601



website: www.AffinityRealEstate.com | email: info@affinityrealestate.com | office: 218-237-3333 | fax: 218-237-3377



\$272,000
 MLS 6318200 Commercial
 Sale
 309 15th Street
 Bemidji MN 56601



website: www.AffinityRealEstate.com | email: info@affinityrealestate.com | office: 218-237-3333 | fax: 218-237-3377

Affinity
REAL ESTATE INC

\$272,000
MLS 6318200 Commercial
Sale
309 15th Street
Bemidji MN 56601



website: www.AffinityRealEstate.com | email: info@affinityrealestate.com | office: 218-237-3333 | fax: 218-237-3377



\$272,000
 MLS 6318200 Commercial
 Sale
 309 15th Street
 Bemidji MN 56601