



MLS 6318943 Residential

\$359,900

1,800 sq ft
3 bedrooms
2 baths

23945 Aspen Road
Shevlin MN 56676

Status: Expired

Description:

Gorgeous country home on 15 private wooded acres south of Bagley! Large 3 bdrm-2 bath home with vaulted ceilings, custom kitchen with pantry and pull out shelves in all the base cabinets, large built-in hutch in dining room, patio door off of dining room onto the back deck, master bedroom with huge walk-in closet. Basement is unfinished so is an open slate to do what you wish [basement is very well done using ICF forms (insulated concrete forms)]. The attached garage is huge (24' x 61') with a 'pass thru' overhead door and offers many options to finish if you would like. In addition, there is a 32' x 44' insulated/heated shop with approx.. 14' sidewalls, wood furnace, floor drain, and frost-free water hydrant. Other bonuses are a fenced in backyard, apple and plum trees, owned propane tank, 8' x 8' enclosed deer stand. Close to Minerva Lake and 1000's acres of public land.

Additional Details:

Year Built	2007
Lot Acres	15
Lot Dimensions	495x1320
Garage Stalls	3
School District	162
Taxes	\$1,837
Taxes with Assessments	\$1,837
Tax Year	2023

Additional Features:

Fuel: Electric, Propane **Heat:** Forced Air

Driving Directions:

South of Bagley on #92 for 10 3/4 miles, left (east) on Upper Rice Lake Rd for 2.5 miles, right (south) on Aspen Ave for 1.25 miles, property is on the right.



Listed By:
Realty Experts, LLC

Affinity Real Estate Inc. participates in the Regional Multiple Listing Service of Minnesota, Inc Broker Reciprocity (sm) program, allowing us to display other broker's listings on our website. All properties are subject to prior sale, change or withdrawal.



Call Affinity Real Estate

218-237-3333

info@affinityrealestate.com



Affinity Real Estate - 600 Park Avenue South - Park Rapids MN 56470



website: www.AffinityRealEstate.com | email: info@affinityrealestate.com | office: 218-237-3333 | fax: 218-237-3377

Affinity
REAL ESTATE INC

\$359,900
MLS 6318943 Residential
23945 Aspen Road
Shevlin MN 56676



website: www.AffinityRealEstate.com | email: info@affinityrealestate.com | office: 218-237-3333 | fax: 218-237-3377



\$359,900
 MLS 6318943 Residential
 23945 Aspen Road
 Shevlin MN 56676



website: www.AffinityRealEstate.com | email: info@affinityrealestate.com | office: 218-237-3333 | fax: 218-237-3377



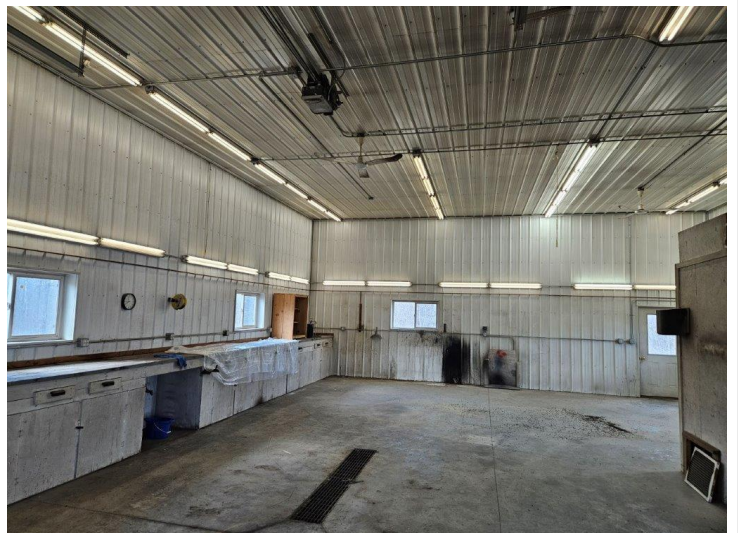
\$359,900
 MLS 6318943 Residential
 23945 Aspen Road
 Shevlin MN 56676



website: www.AffinityRealEstate.com | email: info@affinityrealestate.com | office: 218-237-3333 | fax: 218-237-3377



\$359,900
 MLS 6318943 Residential
 23945 Aspen Road
 Shevlin MN 56676



website: www.AffinityRealEstate.com | email: info@affinityrealestate.com | office: 218-237-3333 | fax: 218-237-3377



\$359,900
 MLS 6318943 Residential
 23945 Aspen Road
 Shevlin MN 56676



website: www.AffinityRealEstate.com | email: info@affinityrealestate.com | office: 218-237-3333 | fax: 218-237-3377



\$359,900
 MLS 6318943 Residential
 23945 Aspen Road
 Shevlin MN 56676



website: www.AffinityRealEstate.com | email: info@affinityrealestate.com | office: 218-237-3333 | fax: 218-237-3377



\$359,900
 MLS 6318943 Residential
 23945 Aspen Road
 Shevlin MN 56676



website: www.AffinityRealEstate.com | email: info@affinityrealestate.com | office: 218-237-3333 | fax: 218-237-3377



\$359,900
 MLS 6318943 Residential
 23945 Aspen Road
 Shevlin MN 56676