



MLS 6320079 Residential

\$142,900

1,008 sq ft
3 bedrooms
1 baths

2101 Irvine Avenue
Bemidji MN 56601

Status: Closed

Description:

This 3 bedroom home sits centrally located in Bemidji, to include walking distance to parks, shopping and Bemidji State University. This cozy home has on-site laundry, a full bathroom, pocket doors that saves space, and some hardwood flooring throughout. This corner lot boasts privacy with lilac flowers around the perimeter and a detached single stall garage for that storage we all need.

Additional Details:

Year Built	1945
Lot Acres	0.25
Lot Dimensions	140x70
Garage Stalls	1
School District	31
Taxes	\$1,126
Taxes with Assessments	\$1,126
Tax Year	2022

Additional Features:

Basement: Crawl Space **Fuel:** Natural Gas **Garage:** 1 **Heat:** Forced Air, Fireplace(s) **Sewer:** City Sewer - In Street **Water:** City Water/Connected
Air Conditioning: None

Driving Directions:

Go north on Irvine Ave and the house will be on the left just after 21st Street.



Listed By:
Coldwell Banker Crown Realtors

Affinity Real Estate Inc. participates in the Regional Multiple Listing Service of Minnesota, Inc Broker Reciprocity (sm) program, allowing us to display other broker's listings on our website. All properties are subject to prior sale, change or withdrawal.



Call Affinity Real Estate

218-237-3333

info@affinityrealestate.com



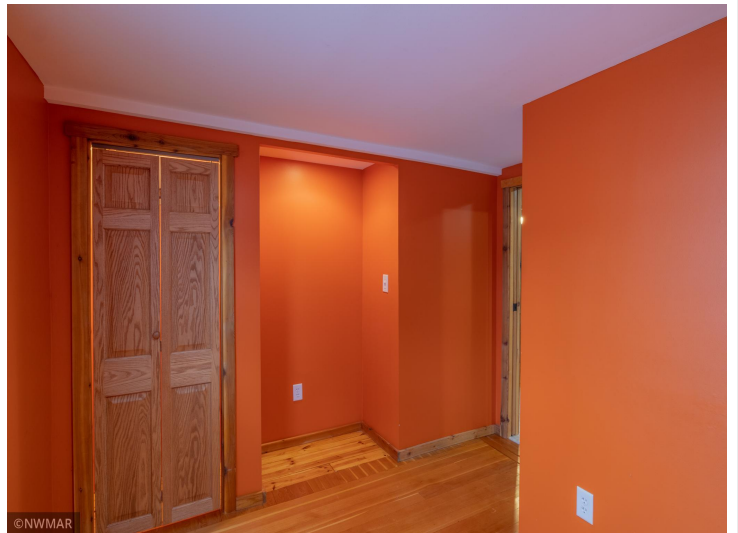
Affinity Real Estate - 600 Park Avenue South - Park Rapids MN 56470



website: www.AffinityRealEstate.com | email: info@affinityrealestate.com | office: 218-237-3333 | fax: 218-237-3377

Affinity
REAL ESTATE INC

\$142,900
MLS 6320079 Residential
2101 Irvine Avenue
Bemidji MN 56601



website: www.AffinityRealEstate.com | email: info@affinityrealestate.com | office: 218-237-3333 | fax: 218-237-3377

Affinity
REAL ESTATE INC

\$142,900
MLS 6320079 Residential
2101 Irvine Avenue
Bemidji MN 56601



website: www.AffinityRealEstate.com | email: info@affinityrealestate.com | office: 218-237-3333 | fax: 218-237-3377



\$142,900
MLS 6320079 Residential
2101 Irvine Avenue
Bemidji MN 56601



©NWMAR

All dimensions are approximate and subject to independent verification.

website: www.AffinityRealEstate.com | email: info@affinityrealestate.com | office: 218-237-3333 | fax: 218-237-3377

Affinity
REAL ESTATE INC

\$142,900
MLS 6320079 Residential
2101 Irvine Avenue
Bemidji MN 56601