



MLS 6321292 Lake Home

\$209,900

1,879 sq ft
3 bedrooms
4 baths

6946 Beach View Lane
Walker MN 56484

Waterfront: Leech

Status: Active

Description:

Enjoy luxury lakeside 1/4 share fractional ownership on the beautiful south side of Leech Lake! This FULLY FURNISHED lakeside home features 3 bedrooms/4 baths, open concept living, 2 gas fireplaces, 2 large master suites, a custom kitchen and a standard of "Up North" elegance you must see to believe. This upscale home is located within Trapper's Landing Resort that features historic Merit restaurant & bar, a marina and more! Use your quarter-share fractional lake home as much as you like or rent it through the on-site management company. Owners also have the option of allowing Trapper's Landing Lodge to rent the entire home out or even rent out just a portion of the home. For your convenience, all interior & exterior maintenance is provided by on-site management. Association amenities include an outdoor swimming pool, gorgeous sand swimming beach, sauna, playground, over 17 acres and 1600 feet of frontage on premier Leech Lake.

Additional Details:

Year Built	2006
Lot Acres	0.1
Lot Dimensions	36.5 x 75
School District	113
Taxes	\$3,124
Taxes with Assessments	\$3,190
Tax Year	2022

Additional Features:

Basement: None **Fuel:** Electric, Propane **Heat:** Forced Air, Fireplace(s) **Sewer:** Mound Septic, Private Sewer, Shared Septic **Water:** Drilled, Private, Shared System, Well **Air Conditioning:** Central Air

Driving Directions:

From Walker, go East on MN 200 for 11.7 miles, turn left on 19th Ave NW/Merit Road, follow to Trapper's Landing Lodge.



Listed By:
Bill Hansen Realty/Longville

Affinity Real Estate Inc. participates in the Regional Multiple Listing Service of Minnesota, Inc Broker Reciprocity (sm) program, allowing us to display other broker's listings on our website. All properties are subject to prior sale, change or withdrawal.



Call Affinity Real Estate

218-237-3333

info@affinityrealestate.com



Affinity Real Estate - 600 Park Avenue South - Park Rapids MN 56470



website: www.AffinityRealEstate.com | email: info@affinityrealestate.com | office: 218-237-3333 | fax:218-237-3377

Affinity
REAL ESTATE INC

\$209,900
MLS 6321292 Lake Home
6946 Beach View Lane
Walker MN 56484



website: www.AffinityRealEstate.com | email: info@affinityrealestate.com | office: 218-237-3333 | fax: 218-237-3377

Affinity
REAL ESTATE INC

\$209,900
MLS 6321292 Lake Home
6946 Beach View Lane
Walker MN 56484



website: www.AffinityRealEstate.com | email: info@affinityrealestate.com | office: 218-237-3333 | fax:218-237-3377

Affinity
REAL ESTATE INC

\$209,900
MLS 6321292 Lake Home
6946 Beach View Lane
Walker MN 56484



website: www.AffinityRealEstate.com | email: info@affinityrealestate.com | office: 218-237-3333 | fax: 218-237-3377

Affinity
REAL ESTATE INC

\$209,900
MLS 6321292 Lake Home
6946 Beach View Lane
Walker MN 56484



website: www.AffinityRealEstate.com | email: info@affinityrealestate.com | office: 218-237-3333 | fax: 218-237-3377

Affinity
REAL ESTATE INC

\$209,900
MLS 6321292 Lake Home
6946 Beach View Lane
Walker MN 56484



website: www.AffinityRealEstate.com | email: info@affinityrealestate.com | office: 218-237-3333 | fax:218-237-3377

Affinity
REAL ESTATE INC

\$209,900
MLS 6321292 Lake Home
6946 Beach View Lane
Walker MN 56484



website: www.AffinityRealEstate.com | email: info@affinityrealestate.com | office: 218-237-3333 | fax: 218-237-3377

Affinity
REAL ESTATE INC

\$209,900
MLS 6321292 Lake Home
6946 Beach View Lane
Walker MN 56484



website: www.AffinityRealEstate.com | email: info@affinityrealestate.com | office: 218-237-3333 | fax:218-237-3377



\$209,900
MLS 6321292 Lake Home
6946 Beach View Lane
Walker MN 56484



website: www.AffinityRealEstate.com | email: info@affinityrealestate.com | office: 218-237-3333 | fax: 218-237-3377



\$209,900
MLS 6321292 Lake Home
6946 Beach View Lane
Walker MN 56484



website: www.AffinityRealEstate.com | email: info@affinityrealestate.com | office: 218-237-3333 | fax:218-237-3377



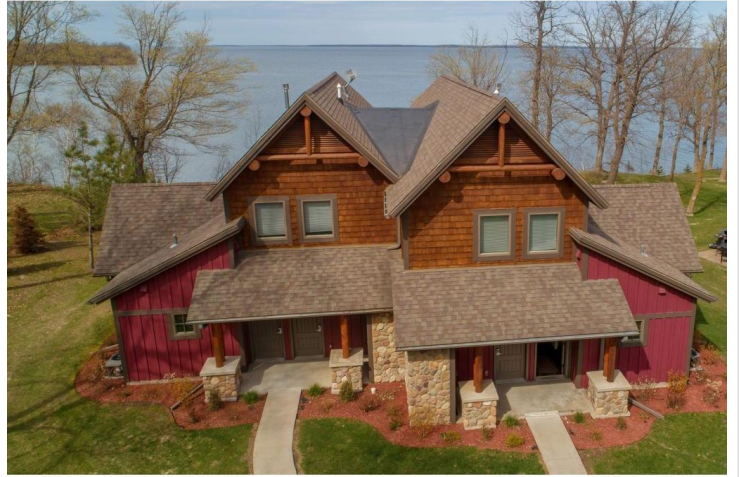
\$209,900
MLS 6321292 Lake Home
6946 Beach View Lane
Walker MN 56484



website: www.AffinityRealEstate.com | email: info@affinityrealestate.com | office: 218-237-3333 | fax: 218-237-3377

Affinity
REAL ESTATE INC

\$209,900
MLS 6321292 Lake Home
6946 Beach View Lane
Walker MN 56484



website: www.AffinityRealEstate.com | email: info@affinityrealestate.com | office: 218-237-3333 | fax:218-237-3377



\$209,900
MLS 6321292 Lake Home
6946 Beach View Lane
Walker MN 56484



website: www.AffinityRealEstate.com | email: info@affinityrealestate.com | office: 218-237-3333 | fax:218-237-3377



\$209,900
MLS 6321292 Lake Home
6946 Beach View Lane
Walker MN 56484



website: www.AffinityRealEstate.com | email: info@affinityrealestate.com | office: 218-237-3333 | fax:218-237-3377



\$209,900
MLS 6321292 Lake Home
6946 Beach View Lane
Walker MN 56484