



MLS 6325931 Lake Land

**\$55,000**

**Description:**

Beautifully wooded lake lot on Sweitzer Lake, which is a natural environmental lake, and located a few miles NE of the city limits of Park Rapids. Featuring 2.26 acres of beautiful tree coverage, walking trail and 200+ feet of shoreline with an added bonus of underground utilities of electric and cable. Lot is located on a dead end and insures minimal traffic and privacy. You won't believe the nature and beauty that will surround you. Several great building sites and walk-out home might be a great option. What a great place to build your get-a-way!

**Additional Details:**

Lot Acres	2.26
Lot Dimensions	317x426x185x428
School District	309
Taxes	\$420
Taxes with Assessments	\$420
Tax Year	2022

**Additional Features:**

**Driving Directions:**

From 34/71: Go east on 34 to CR 4 turn left and follow to CR 81 turn right and continue to Early Bird Drive, turn left to our sign on right.



Listed By:  
Affinity Real Estate Inc.

Affinity Real Estate Inc. participates in the Regional Multiple Listing Service of Minnesota, Inc Broker Reciprocity (sm) program, allowing us to display other broker's listings on our website. All properties are subject to prior sale, change or withdrawal.



**Call Affinity Real Estate**

**218-237-3333**

**info@affinityrealestate.com**



**Affinity Real Estate - 600 Park Avenue South - Park Rapids MN 56470**





website: [www.AffinityRealEstate.com](http://www.AffinityRealEstate.com) | email: [info@affinityrealestate.com](mailto:info@affinityrealestate.com) | office: 218-237-3333 | fax: 218-237-3377



**\$55,000**

MLS 6325931 Lake Land  
TBD Early Bird Drive  
Park Rapids MN 56470





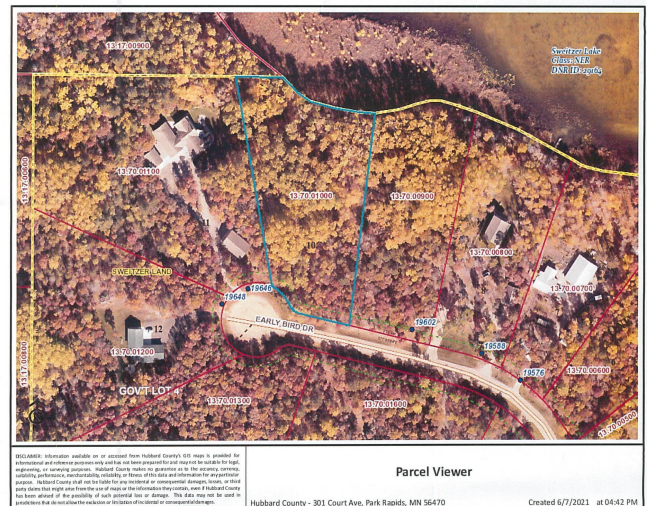
website: [www.AffinityRealEstate.com](http://www.AffinityRealEstate.com) | email: [info@affinityrealestate.com](mailto:info@affinityrealestate.com) | office: 218-237-3333 | fax: 218-237-3377



**\$55,000**

MLS 6325931 Lake Land  
TBD Early Bird Drive  
Park Rapids MN 56470



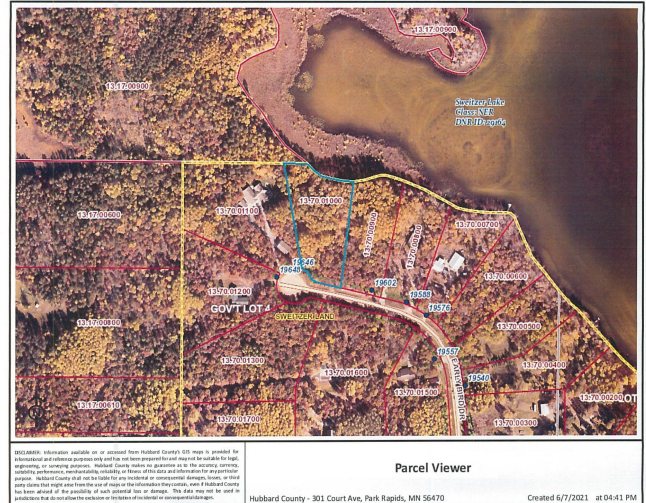
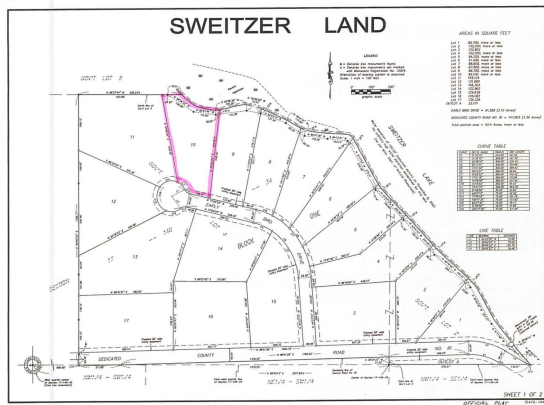


website: [www.AffinityRealEstate.com](http://www.AffinityRealEstate.com) | email: [info@affinityrealestate.com](mailto:info@affinityrealestate.com) | office: 218-237-3333 | fax: 218-237-3377



**\$55,000**  
MLS 6325931 Lake Land  
TBD Early Bird Drive  
Park Rapids MN 56470





website: [www.AffinityRealEstate.com](http://www.AffinityRealEstate.com) | email: [info@affinityrealestate.com](mailto:info@affinityrealestate.com) | office: 218-237-3333 | fax: 218-237-3377



**\$55,000**  
 MLS 6325931 Lake Land  
 TBD Early Bird Drive  
 Park Rapids MN 56470