

MLS 6326077 Lake Land

\$225,000

Description:

Getting back to your roots? In a world of fast-paced development and constant movement, it might be time to find a way to slow down. Sometimes the heart needs to get back to nature, or we need to get our hands dirty to feel whole again. Here is your chance to own a beautiful slice of land. Perhaps a nice organic farm is on the agenda? Are you a horse person? The property boasts a barn with additional acreage, perfect for a few galloping best friends. Gorgeous views and picturesque settings await your morning cup of coffee, or perhaps a little sweet tea at the end of a good day of work.

Additional Details:

Lot Acres	19.3
Lot Dimensions	Irregular
School District	549
Taxes	\$408
Taxes with Assessments	\$408
Tax Year	2022

Additional Features:

Driving Directions:

Head west on State Hwy 228 toward Co Hwy 36. Turn left onto Co Hwy 36. Travel for 1.3 miles, then turn left onto 470th St. The destination will be on the left.



Listed By:
Jack Chivers Realty

Affinity Real Estate Inc. participates in the Regional Multiple Listing Service of Minnesota, Inc Broker Reciprocity (sm) program, allowing us to display other broker's listings on our website. All properties are subject to prior sale, change or withdrawal.



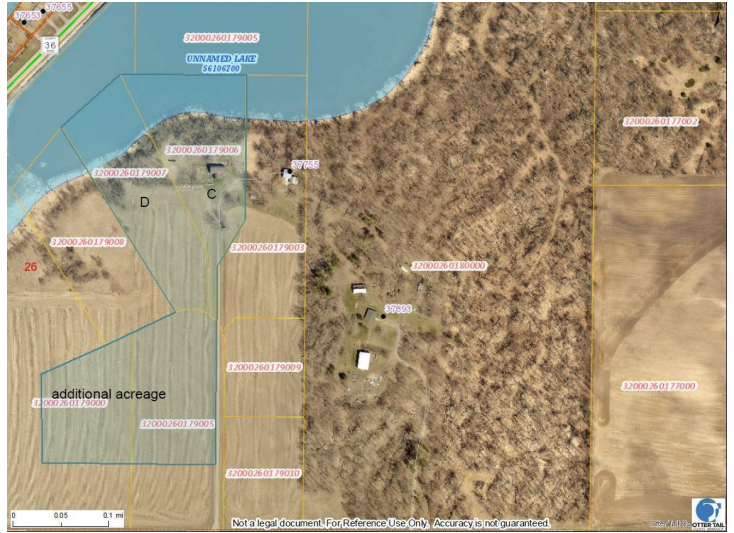
Call Affinity Real Estate

218-237-3333

info@affinityrealestate.com



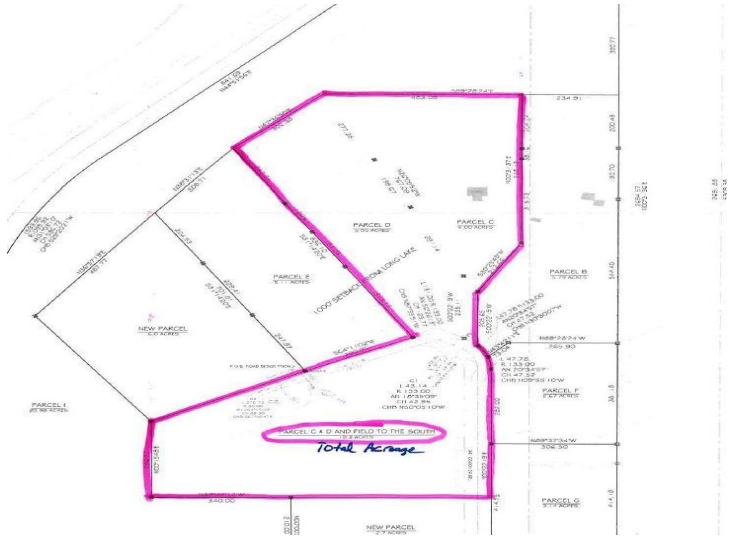
Affinity Real Estate - 600 Park Avenue South - Park Rapids MN 56470



website: www.AffinityRealEstate.com | email: info@affinityrealestate.com | office: 218-237-3333 | fax: 218-237-3377



\$225,000
 MLS 6326077 Lake Land
 Lot TBD 470th Street
 Frazee MN 56544



website: www.AffinityRealEstate.com | email: info@affinityrealestate.com | office: 218-237-3333 | fax: 218-237-3377



\$225,000
 MLS 6326077 Lake Land
 Lot TBD 470th Street
 Frazee MN 56544