



MLS 6326354 Residential

**\$539,900**

2,826 sq ft  
4 bedrooms  
3 baths

1920 Long Prairie Lane  
Detroit Lakes MN 56501

Status: Active

**Description:**

Check out this beautifully built 4 Bedroom 3 Bathroom home with an open floor concept. The master suite has a walk in closet along with a spacious bathroom. Laundry is located on the main level. Spacious family room along with an oversized mechanical room for extra storage. There is also an oversized 3 stall attached garage. It is located on the South side of Detroit Lakes. Just down the road is the Long Lake Park and boat access. Agent to verify all taxes. Owner/Builder/Agent

**Additional Details:**

Year Built	2023
Lot Acres	0.46
Lot Dimensions	164.02 x 119.54
Garage Stalls	3
School District	22
Taxes	\$338
Taxes with Assessments	\$470
Tax Year	2022

**Additional Features:**

**Basement:** Full **Fuel:** Natural Gas **Garage:** 3 **Heat:** Forced Air **Sewer:** City Sewer/Connected **Water:** City Water/Connected **Air Conditioning:** Central Air

**Driving Directions:**

Take Hwy 59 S to Long Lake Road, turn on Longview Dr. Follow signs.



Listed By:  
Counselor Realty of Detroit Lakes

Affinity Real Estate Inc. participates in the Regional Multiple Listing Service of Minnesota, Inc Broker Reciprocity (sm) program, allowing us to display other broker's listings on our website. All properties are subject to prior sale, change or withdrawal.



Call Affinity Real Estate

**218-237-3333**

[info@affinityrealestate.com](mailto:info@affinityrealestate.com)



Affinity Real Estate - 600 Park Avenue South - Park Rapids MN 56470

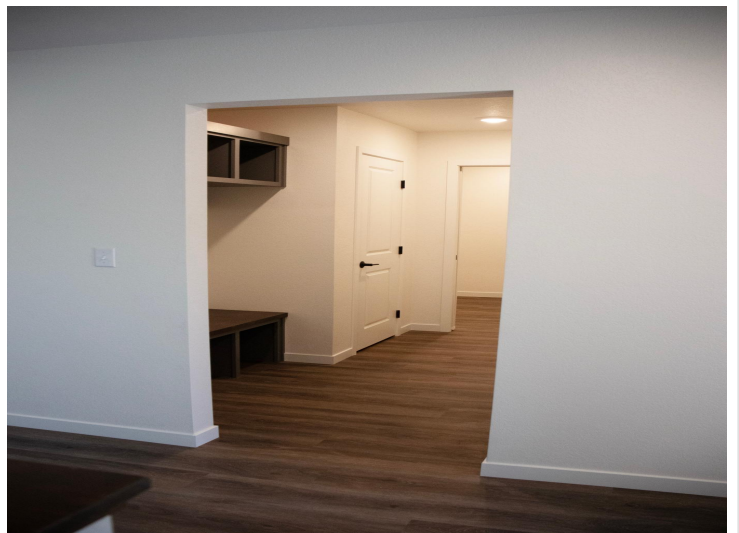


website: [www.AffinityRealEstate.com](http://www.AffinityRealEstate.com) | email: [info@affinityrealestate.com](mailto:info@affinityrealestate.com) | office: 218-237-3333 | fax:218-237-3377



**\$539,900**  
MLS 6326354 Residential  
1920 Long Prairie Lane  
Detroit Lakes MN 56501





website: [www.AffinityRealEstate.com](http://www.AffinityRealEstate.com) | email: [info@affinityrealestate.com](mailto:info@affinityrealestate.com) | office: 218-237-3333 | fax: 218-237-3377



**\$539,900**  
MLS 6326354 Residential  
1920 Long Prairie Lane  
Detroit Lakes MN 56501





website: [www.AffinityRealEstate.com](http://www.AffinityRealEstate.com) | email: [info@affinityrealestate.com](mailto:info@affinityrealestate.com) | office: 218-237-3333 | fax:218-237-3377



**\$539,900**  
MLS 6326354 Residential  
1920 Long Prairie Lane  
Detroit Lakes MN 56501





website: [www.AffinityRealEstate.com](http://www.AffinityRealEstate.com) | email: [info@affinityrealestate.com](mailto:info@affinityrealestate.com) | office: 218-237-3333 | fax:218-237-3377



**\$539,900**  
MLS 6326354 Residential  
1920 Long Prairie Lane  
Detroit Lakes MN 56501



website: [www.AffinityRealEstate.com](http://www.AffinityRealEstate.com) | email: [info@affinityrealestate.com](mailto:info@affinityrealestate.com) | office: 218-237-3333 | fax:218-237-3377



**\$539,900**  
MLS 6326354 Residential  
1920 Long Prairie Lane  
Detroit Lakes MN 56501





website: [www.AffinityRealEstate.com](http://www.AffinityRealEstate.com) | email: [info@affinityrealestate.com](mailto:info@affinityrealestate.com) | office: 218-237-3333 | fax:218-237-3377



**\$539,900**  
MLS 6326354 Residential  
1920 Long Prairie Lane  
Detroit Lakes MN 56501