



MLS 6326614 Residential

**\$289,900**

1,414 sq ft  
3 bedrooms  
2 baths

23115 Gasparilla Drive  
Park Rapids MN 56470

Status: Closed

**Description:**

Attractive offering located in Woodhaven Acres. If you are looking for the convenience of one level living with no steps in or out than look no further. Features 3 bedrooms, 2 baths, hickory cabinets, stainless appliances, gas fireplace and fiber optic internet. The primary bedroom has a custom trayed ceiling, private bathroom with tile shower, jetted tub, dual sink vanity and two walk-in closets. The garage is insulated and sheet rocked. Private setting and scenic beyond expectation. Sits on 2.3 wooded acres.

**Additional Details:**

Year Built	2006
Lot Acres	2.3
Lot Dimensions	620x920x420
Garage Stalls	2
School District	309
Taxes	\$1,594
Taxes with Assessments	\$1,752
Tax Year	2022

**Additional Features:**

**Fuel:** Propane **Heat:** Forced Air, Fireplace(s)

**Driving Directions:**

From CR 4 / HWY 34: Go north on CR 4 to a left on CR 18. Follow to a right on Green Pines Rd to another right on 230th St. Continue to a left on Gasparilla Dr. Stay left at the 'T' and proceed to home on the left.



Listed By:  
Affinity Real Estate Inc.

Affinity Real Estate Inc. participates in the Regional Multiple Listing Service of Minnesota, Inc Broker Reciprocity (sm) program, allowing us to display other broker's listings on our website. All properties are subject to prior sale, change or withdrawal.



**Call Affinity Real Estate**

**218-237-3333**

**info@affinityrealestate.com**



**Affinity Real Estate - 600 Park Avenue South - Park Rapids MN 56470**



website: [www.AffinityRealEstate.com](http://www.AffinityRealEstate.com) | email: [info@affinityrealestate.com](mailto:info@affinityrealestate.com) | office: 218-237-3333 | fax: 218-237-3377

**Affinity**  
REAL ESTATE INC

**\$289,900**  
MLS 6326614 Residential  
23115 Gasparilla Drive  
Park Rapids MN 56470



website: [www.AffinityRealEstate.com](http://www.AffinityRealEstate.com) | email: [info@affinityrealestate.com](mailto:info@affinityrealestate.com) | office: 218-237-3333 | fax: 218-237-3377

**Affinity**  
REAL ESTATE INC

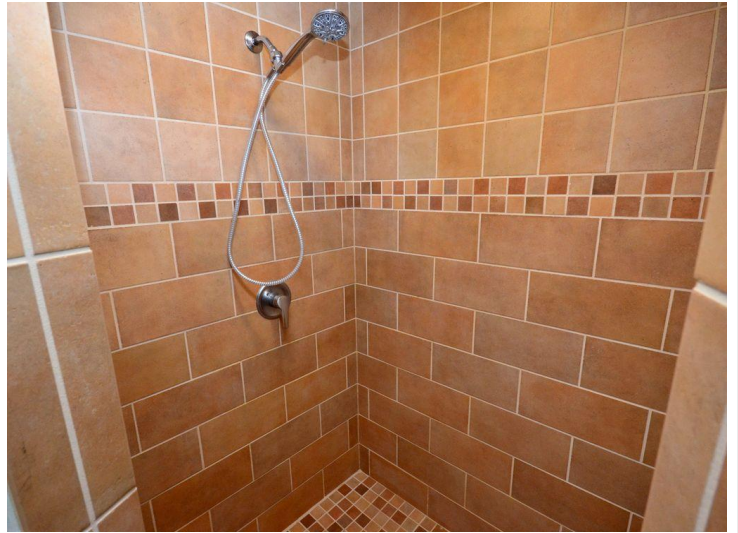
**\$289,900**  
MLS 6326614 Residential  
23115 Gasparilla Drive  
Park Rapids MN 56470



website: [www.AffinityRealEstate.com](http://www.AffinityRealEstate.com) | email: [info@affinityrealestate.com](mailto:info@affinityrealestate.com) | office: 218-237-3333 | fax: 218-237-3377

**Affinity**  
REAL ESTATE INC

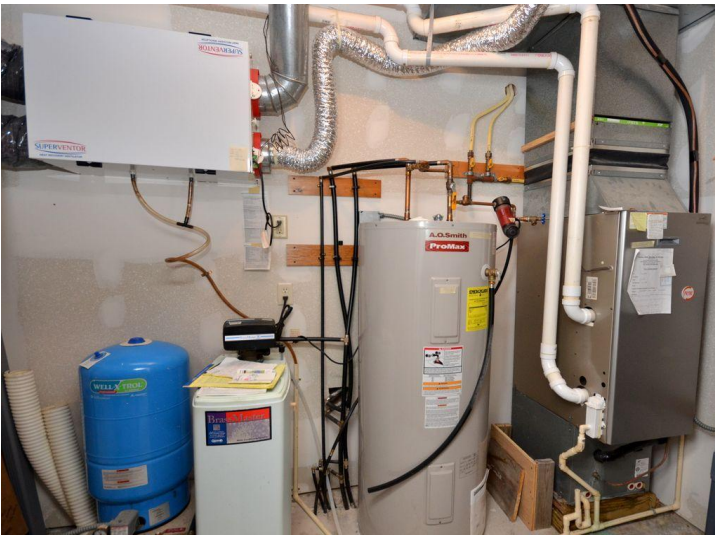
**\$289,900**  
MLS 6326614 Residential  
23115 Gasparilla Drive  
Park Rapids MN 56470



website: [www.AffinityRealEstate.com](http://www.AffinityRealEstate.com) | email: [info@affinityrealestate.com](mailto:info@affinityrealestate.com) | office: 218-237-3333 | fax: 218-237-3377

**Affinity**  
REAL ESTATE INC

**\$289,900**  
MLS 6326614 Residential  
23115 Gasparilla Drive  
Park Rapids MN 56470



website: [www.AffinityRealEstate.com](http://www.AffinityRealEstate.com) | email: [info@affinityrealestate.com](mailto:info@affinityrealestate.com) | office: 218-237-3333 | fax: 218-237-3377

**Affinity**  
REAL ESTATE INC

**\$289,900**  
MLS 6326614 Residential  
23115 Gasparilla Drive  
Park Rapids MN 56470



website: [www.AffinityRealEstate.com](http://www.AffinityRealEstate.com) | email: [info@affinityrealestate.com](mailto:info@affinityrealestate.com) | office: 218-237-3333 | fax:218-237-3377



**\$289,900**  
MLS 6326614 Residential  
23115 Gasparilla Drive  
Park Rapids MN 56470