



MLS 6330690 Residential

**\$344,900**

1,280 sq ft  
2 bedrooms  
2 baths

1615 30th Street  
Bemidji MN 56601

Status: Active

**Description:**

Welcome to North Ridge Cottages. This 2 bd, 2 ba townhouse is ready for you. This new construction boasts vaulted ceiling, open floor plan, back patio, stainless steel appliances and pantry. Enjoy this wonderful location, close to shopping, a city park and Sanford health. The home has a heated garage plus a bonus community room for social gatherings or use the exercise room. It is time for you to enjoy maintenance free living. The monthly fee includes snow removal and lawn care, so you have more time for other fun activities! Call for a private tour today.

**Additional Details:**

Year Built	2023
Garage Stalls	1
School District	31
Taxes	(unreported)
Taxes with Assessments	(unreported)
Tax Year	2022

**Additional Features:**

**Basement:** None **Fuel:** Natural Gas **Garage:** 1 **Heat:** Forced Air **Sewer:** City Sewer/Connected **Water:** City Water/Connected **Air Conditioning:** Central Air

**Driving Directions:**

From downtown north on Irvine Ave to 30th ST. West on 30th ST development is on the north.



Listed By:  
Better Homes and Gardens Real Estate First Choice

Affinity Real Estate Inc. participates in the Regional Multiple Listing Service of Minnesota, Inc Broker Reciprocity (sm) program, allowing us to display other broker's listings on our website. All properties are subject to prior sale, change or withdrawal.



**Call Affinity Real Estate**

**218-237-3333**

**info@affinityrealestate.com**



**Affinity Real Estate - 600 Park Avenue South - Park Rapids MN 56470**





website: [www.AffinityRealEstate.com](http://www.AffinityRealEstate.com) | email: [info@affinityrealestate.com](mailto:info@affinityrealestate.com) | office: 218-237-3333 | fax: 218-237-3377

**Affinity**  
REAL ESTATE INC

**\$344,900**  
MLS 6330690 Residential  
1615 30th Street  
Bemidji MN 56601



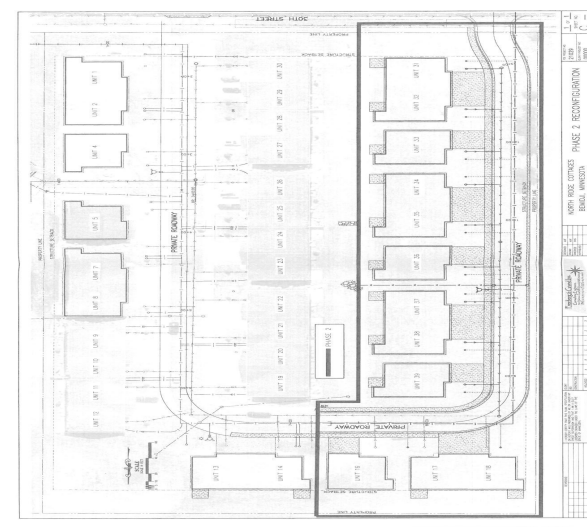


website: [www.AffinityRealEstate.com](http://www.AffinityRealEstate.com) | email: [info@affinityrealestate.com](mailto:info@affinityrealestate.com) | office: 218-237-3333 | fax: 218-237-3377

**Affinity**  
REAL ESTATE INC

**\$344,900**  
MLS 6330690 Residential  
1615 30th Street  
Bemidji MN 56601





website: [www.AffinityRealEstate.com](http://www.AffinityRealEstate.com) | email: [info@affinityrealestate.com](mailto:info@affinityrealestate.com) | office: 218-237-3333 | fax: 218-237-3377



**\$344,900**  
 MLS 6330690 Residential  
 1615 30th Street  
 Bemidji MN 56601





website: [www.AffinityRealEstate.com](http://www.AffinityRealEstate.com) | email: [info@affinityrealestate.com](mailto:info@affinityrealestate.com) | office: 218-237-3333 | fax: 218-237-3377

**Affinity**  
REAL ESTATE INC

**\$344,900**  
MLS 6330690 Residential  
1615 30th Street  
Bemidji MN 56601





website: [www.AffinityRealEstate.com](http://www.AffinityRealEstate.com) | email: [info@affinityrealestate.com](mailto:info@affinityrealestate.com) | office: 218-237-3333 | fax: 218-237-3377



**\$344,900**  
 MLS 6330690 Residential  
 1615 30th Street  
 Bemidji MN 56601