



MLS 6335199 Residential

\$369,900

1,538 sq ft
2 bedrooms
2 baths

1615 30th Street
Bemidji MN 56601

Status: Active

Description:

One level living in North Ridge Cottages close to shopping, medical, banks and restaurants. This new construction home has 2BR/2BA, double attached heated garage, four-season sunroom, primary ensuite with laundry and walk-in closet. In-floor heat along with a mini split heat and AC unit. Vaulted ceilings in the great room, open floor plan with kitchen island for entertaining. Ownership in this Common Interest Community includes the use of the community unit, with an exercise room, party space with kitchen and bath. Easy living with no mowing or shoveling!

Additional Details:

Year Built	2023
Lot Acres	0.01
Lot Dimensions	TBD
Garage Stalls	2
School District	31
Taxes	(unreported)
Taxes with Assessments	(unreported)
Tax Year	2023

Additional Features:

Basement: None **Fuel:** Natural Gas **Garage:** 2 **Heat:** Boiler, Ductless Mini-Split, Radiant Floor **Sewer:** City Sewer/Connected **Water:** City Water/Connected **Air Conditioning:** Ductless Mini-Split

Driving Directions:

North on Irvine Ave, left on 30th St 7 blocks. North Ridge Cottages on the right.



Listed By:
CENTURY 21 Dickinson Realtors

Affinity Real Estate Inc. participates in the Regional Multiple Listing Service of Minnesota, Inc Broker Reciprocity (sm) program, allowing us to display other broker's listings on our website. All properties are subject to prior sale, change or withdrawal.



Call Affinity Real Estate

218-237-3333

info@affinityrealestate.com



Affinity Real Estate - 600 Park Avenue South - Park Rapids MN 56470



website: www.AffinityRealEstate.com | email: info@affinityrealestate.com | office: 218-237-3333 | fax: 218-237-3377



\$369,900
 MLS 6335199 Residential
 1615 30th Street
 Bemidji MN 56601



website: www.AffinityRealEstate.com | email: info@affinityrealestate.com | office: 218-237-3333 | fax: 218-237-3377



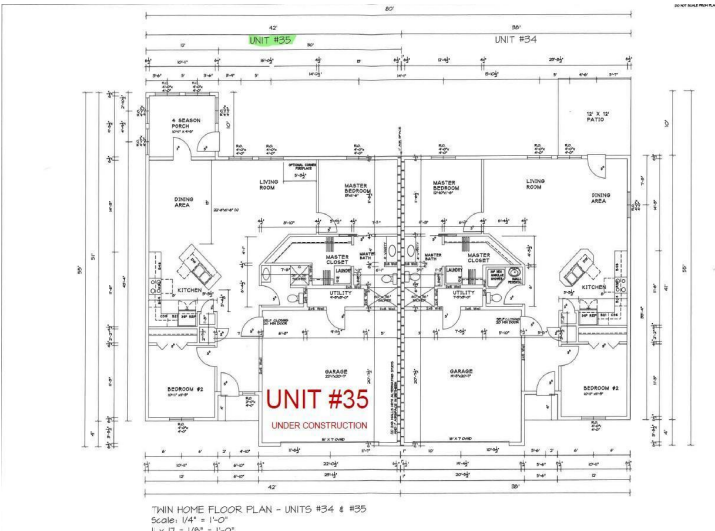
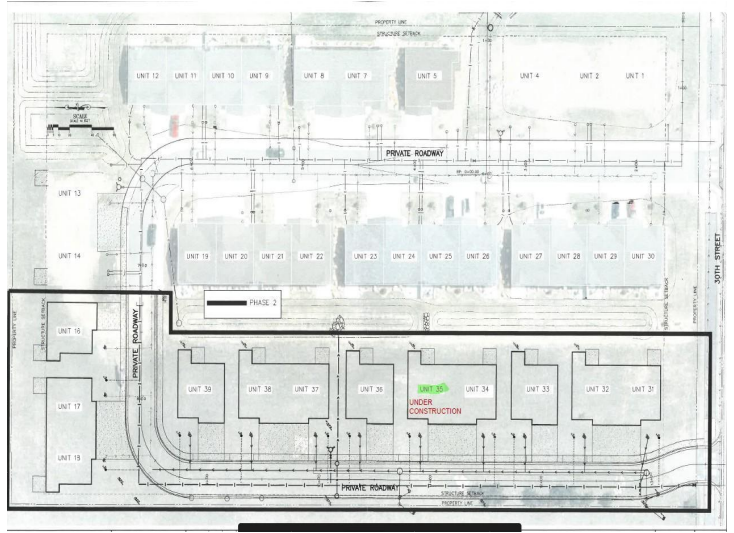
\$369,900
MLS 6335199 Residential
1615 30th Street
Bemidji MN 56601



website: www.AffinityRealEstate.com | email: info@affinityrealestate.com | office: 218-237-3333 | fax: 218-237-3377



\$369,900
 MLS 6335199 Residential
 1615 30th Street
 Bemidji MN 56601



website: www.AffinityRealEstate.com | email: info@affinityrealestate.com | office: 218-237-3333 | fax: 218-237-3377



\$369,900
 MLS 6335199 Residential
 1615 30th Street
 Bemidji MN 56601