



MLS 6338414 Land

\$32,900

2.5 Acres
Raw Land

XXX Henrietta Avenue
Park Rapids MN 56470

Status: Expired

Description:

Park Rapids City Lot - Have a little country within the city limits. Very spacious 2.5 acre parcel which is level, wooded and conveniently located on main road but out enough to make travel easy. First time offered, \$32,900.

Additional Details:

Lot Acres	2.5
Lot Dimensions	250x443
School District	309
Taxes	\$336
Taxes with Assessments	\$336
Tax Year	2022

Additional Features:

Driving Directions:

Park Rapids - take Highway 34 East to Henrietta Avenue S, turn South and proceed 1 1/2 miles and property will be on your right (West side).



Listed By:
Affinity Real Estate Inc.

Affinity Real Estate Inc. participates in the Regional Multiple Listing Service of Minnesota, Inc Broker Reciprocity (sm) program, allowing us to display other broker's listings on our website. All properties are subject to prior sale, change or withdrawal.



Call Affinity Real Estate

218-237-3333

info@affinityrealestate.com



Affinity Real Estate - 600 Park Avenue South - Park Rapids MN 56470



website: www.AffinityRealEstate.com | email: info@affinityrealestate.com | office: 218-237-3333 | fax: 218-237-3377



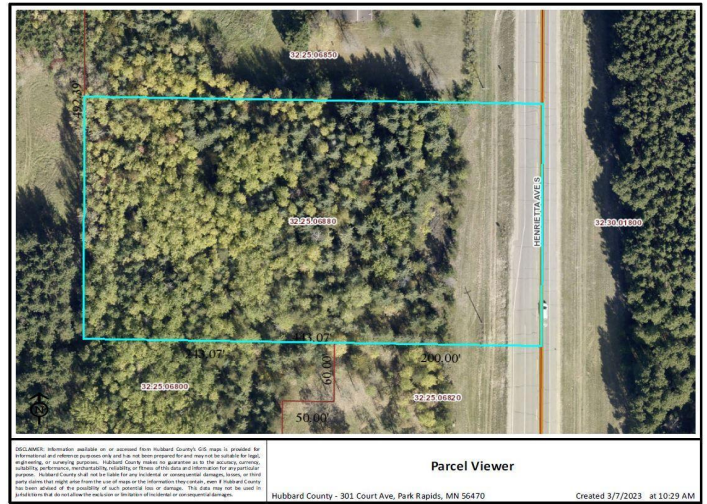
\$32,900
MLS 6338414 Land
XXX Henrietta Avenue
Park Rapids MN 56470



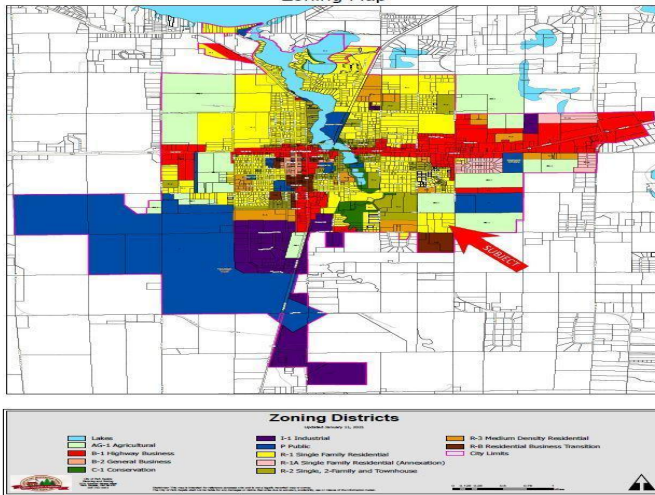
website: www.AffinityRealEstate.com | email: info@affinityrealestate.com | office: 218-237-3333 | fax: 218-237-3377



\$32,900
MLS 6338414 Land
XXX Henrietta Avenue
Park Rapids MN 56470



City of Park Rapids
Zoning Map



website: www.AffinityRealEstate.com | email: info@affinityrealestate.com | office: 218-237-3333 | fax: 218-237-3377

Affinity
REAL ESTATE INC

\$32,900
MLS 6338414 Land
XXX Henrietta Avenue
Park Rapids MN 56470