



MLS 6341715 Lake Home

\$479,000

2,216 sq ft
3 bedrooms
2 baths

20930 Fawn River Drive
Nevis MN 56467

Waterfront: Belle Taine

Status: Closed

Description:

This stunning home on Lake Belle Taine is ready for new owners! This spacious 3 bedroom, 2 bathroom home features luxurious upgrades such as granite countertops and cherry cabinets, as well as a cozy fireplace perfect for chilly evenings. Enjoy the gorgeous lake view from the large deck, or spend time tinkering in the double detached garage or large shop. The lower level family room with walkout basement provides additional comfortable living space. In addition to the features already mentioned, the primary bedroom boasts a custom tile shower, providing an extra touch of comfort and style. This home truly has it all - from the beautiful lake view to the double detached garage, large shop, and lower level family room with walkout basement. Don't miss your chance to own this incredible property and make it your own!

Additional Details:

Year Built	2006
Lot Acres	1.6
Lot Dimensions	162x446x166x437
Garage Stalls	4
School District	308
Taxes	\$2,334
Taxes with Assessments	\$2,492
Tax Year	2022

Additional Features:

Fuel: Electric, Propane **Heat:** Fireplace(s), Radiant Floor

Driving Directions:

From Park Rapids take Hwy 34 East to State 226 (Dorset Corner), Left onto State 226 through Dorset to a right onto County 18 for 4 miles to Fawn River Dr., turn right and continue 300 feet to property on left.



Listed By:
Keller Williams Realty Professionals

Affinity Real Estate Inc. participates in the Regional Multiple Listing Service of Minnesota, Inc Broker Reciprocity (sm) program, allowing us to display other broker's listings on our website. All properties are subject to prior sale, change or withdrawal.



Call Affinity Real Estate

218-237-3333

info@affinityrealestate.com



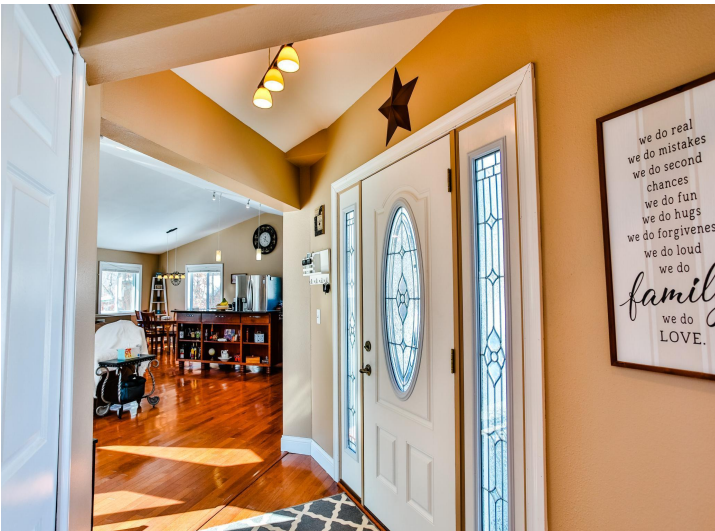
Affinity Real Estate - 600 Park Avenue South - Park Rapids MN 56470



website: www.AffinityRealEstate.com | email: info@affinityrealestate.com | office: 218-237-3333 | fax: 218-237-3377



\$479,000
 MLS 6341715 Lake Home
 20930 Fawn River Drive
 Nevis MN 56467



website: www.AffinityRealEstate.com | email: info@affinityrealestate.com | office: 218-237-3333 | fax: 218-237-3377

Affinity
REAL ESTATE INC

\$479,000
MLS 6341715 Lake Home
20930 Fawn River Drive
Nevis MN 56467



website: www.AffinityRealEstate.com | email: info@affinityrealestate.com | office: 218-237-3333 | fax: 218-237-3377

Affinity
REAL ESTATE INC

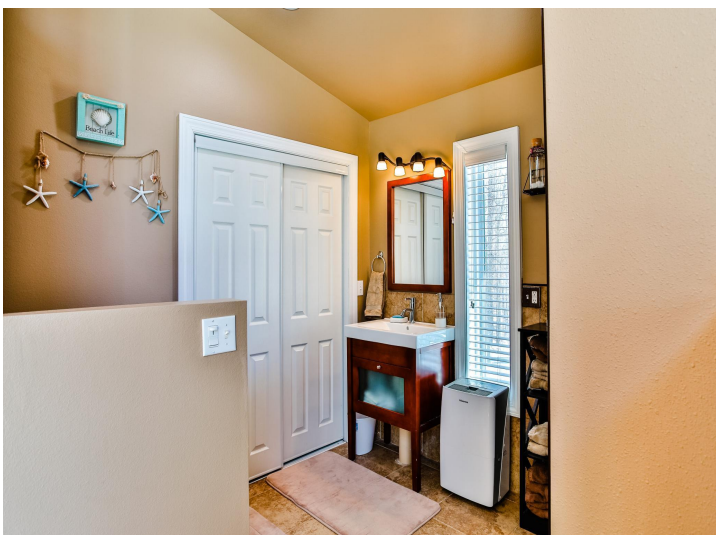
\$479,000
MLS 6341715 Lake Home
20930 Fawn River Drive
Nevis MN 56467



website: www.AffinityRealEstate.com | email: info@affinityrealestate.com | office: 218-237-3333 | fax: 218-237-3377

Affinity
REAL ESTATE INC

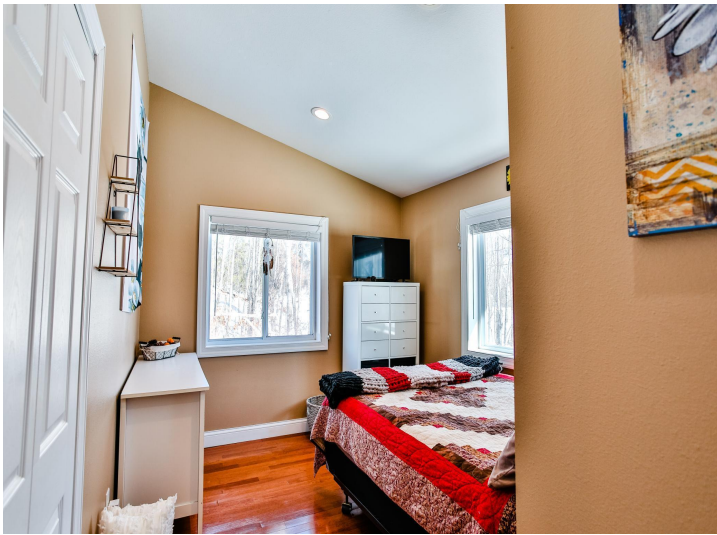
\$479,000
MLS 6341715 Lake Home
20930 Fawn River Drive
Nevis MN 56467



website: www.AffinityRealEstate.com | email: info@affinityrealestate.com | office: 218-237-3333 | fax: 218-237-3377

Affinity
REAL ESTATE INC

\$479,000
MLS 6341715 Lake Home
20930 Fawn River Drive
Nevis MN 56467



website: www.AffinityRealEstate.com | email: info@affinityrealestate.com | office: 218-237-3333 | fax: 218-237-3377

Affinity
REAL ESTATE INC

\$479,000
MLS 6341715 Lake Home
20930 Fawn River Drive
Nevis MN 56467



website: www.AffinityRealEstate.com | email: info@affinityrealestate.com | office: 218-237-3333 | fax: 218-237-3377

Affinity
REAL ESTATE INC

\$479,000
MLS 6341715 Lake Home
20930 Fawn River Drive
Nevis MN 56467