



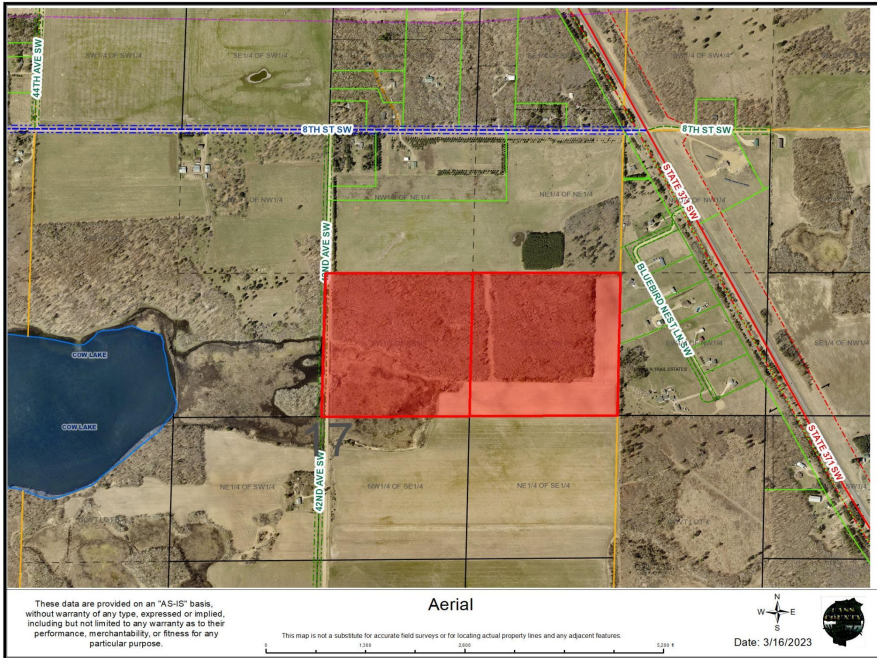
MLS 6343601 Land

\$299,900

80 Acres
Raw Land

TBD 42nd Avenue
Pine River MN 56474

Status: Active



Description:

Check out this property with 80 acres of prime deer hunting land. The property has a stick built deluxe deer stand on the east side next to approximately 10 acres of food plot to feed the wild life. There are many trails already in use and established including a trail cut from 42nd Ave SW for truck access. If you are looking for a property for hunting already setup and ready to go, look no further!

Additional Details:

Lot Acres	80
Lot Dimensions	2600x1300x2600x1300
School District	820
Taxes	\$284
Taxes with Assessments	\$284
Tax Year	2022

Additional Features:

Driving Directions:

371 to 8th St SW, take the first right on 42nd. Sign on the property on the left side of the road.



Listed By:
eXp Realty

Affinity Real Estate Inc. participates in the Regional Multiple Listing Service of Minnesota, Inc Broker Reciprocity (sm) program, allowing us to display other broker's listings on our website. All properties are subject to prior sale, change or withdrawal.



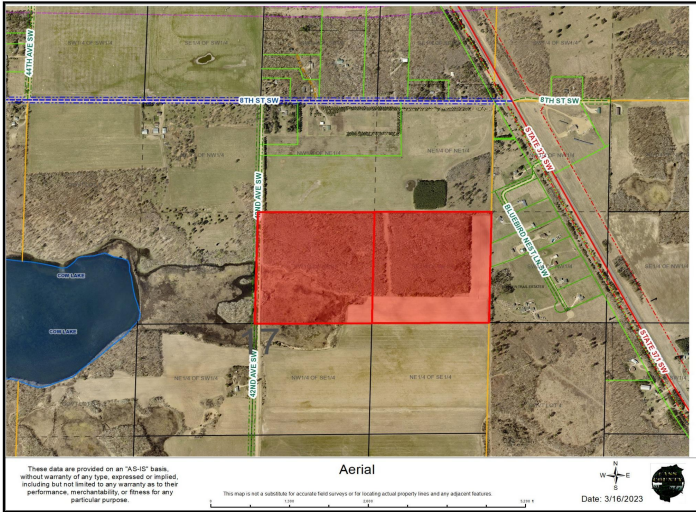
Call Affinity Real Estate

218-237-3333

info@affinityrealestate.com



Affinity Real Estate - 600 Park Avenue South - Park Rapids MN 56470



website: www.AffinityRealEstate.com | email: info@affinityrealestate.com | office: 218-237-3333 | fax:218-237-3377



\$299,900
MLS 6343601 Land
TBD 42nd Avenue
Pine River MN 56474