



MLS 6343650 Commercial Sale

\$549,000

Description:

20,000+ Square Foot Commercial Building in Detroit Lakes in close proximity to the Hwy's 10&59 Intersection. Mix of Light Manufacturing, Retail, and Office Space. 13 rentable Units. Many options of use for the building. Move your business in and/or collect rent from your tenants! Partial seller financing available.

Additional Details:

Year Built	1940
Lot Acres	0.55
Lot Dimensions	Irregula
Garage Stalls	2
School District	22
Taxes	\$8,434
Taxes with Assessments	\$8,434
Tax Year	2022

Additional Features:

Fuel: Natural Gas **Garage:** 2 **Heat:** Forced Air **Sewer:** City Sewer/Connected **Water:** City Water/Connected

Driving Directions:

Main St Near Train Tracks



Listed By:
The Real Estate Company of Detroit Lakes

Affinity Real Estate Inc. participates in the Regional Multiple Listing Service of Minnesota, Inc Broker Reciprocity (sm) program, allowing us to display other broker's listings on our website. All properties are subject to prior sale, change or withdrawal.



Call Affinity Real Estate

218-237-3333

info@affinityrealestate.com



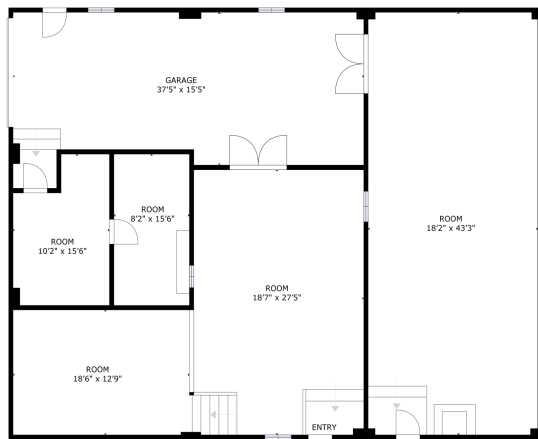
Affinity Real Estate - 600 Park Avenue South - Park Rapids MN 56470



website: www.AffinityRealEstate.com | email: info@affinityrealestate.com | office: 218-237-3333 | fax: 218-237-3377

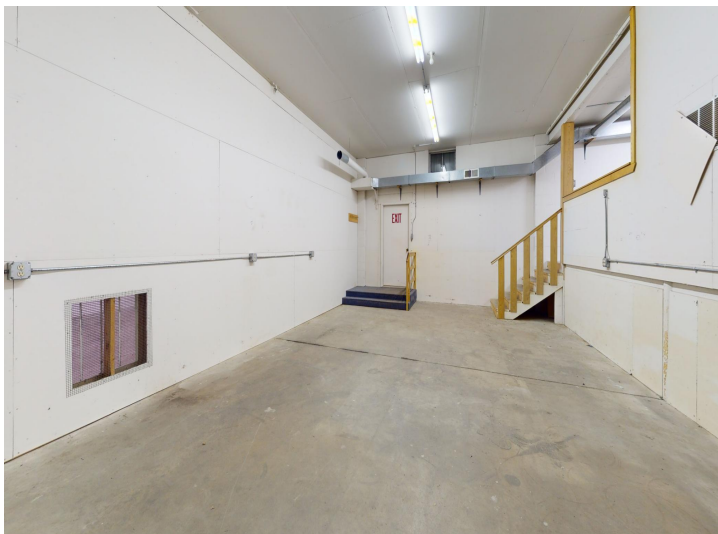


\$549,000
 MLS 6343650 Commercial
 Sale
 620 Main Street
 Detroit Lakes MN 56501



FLOOR 1

GROSS INTERNAL AREA
TOTAL: 2615 sq.ft.
(DIMENSIONS AND CALCULATIONS ARE APPROXIMATIONS. ACTUAL MAY VARY.)



website: www.AffinityRealEstate.com | email: info@affinityrealestate.com | office: 218-237-3333 | fax: 218-237-3377



\$549,000
MLS 6343650 Commercial
Sale
620 Main Street
Detroit Lakes MN 56501



website: www.AffinityRealEstate.com | email: info@affinityrealestate.com | office: 218-237-3333 | fax: 218-237-3377



\$549,000
MLS 6343650 Commercial
Sale
620 Main Street
Detroit Lakes MN 56501