



MLS 6345934 Lake Home

\$299,000

1,902 sq ft
3 bedrooms
2 baths

710 State Hwy 29
Deer Creek MN 56527

Waterfront: Alice Lake (Dora Twp.)

Status: Closed

Description:

Great opportunity for rural living with this updated 2000 square foot home with a heated attached garage. A few of the updates include new windows, new flooring, remodeled bathroom, along with much more. The property is an amazing 2 acres of a park like setting. The large shed includes part of which is insulated with heat to keep projects going throughout winter. The other part of the shed offers a large open space with great potential or continue to use as cold storage. Rural properties like this are hard to come by, schedule a showing today!

Additional Details:

| | |
|------------------------|---------|
| Year Built | 1979 |
| Lot Acres | 2 |
| Lot Dimensions | 238x435 |
| Garage Stalls | 2 |
| School District | 2155 |
| Taxes | \$1,626 |
| Taxes with Assessments | \$1,706 |
| Tax Year | 2023 |

Additional Features:

Basement: Block, Egress Window(s), Finished, Full **Fuel:** Oil **Garage:** 2 **Heat:** Boiler **Sewer:** Private Sewer, Tank with Drainage Field
Water: Private **Air Conditioning:** Ductless Mini-Split

Driving Directions:

710 State Hwy 29, Deer Creek



Listed By:
Century 21 Atwood

Affinity Real Estate Inc. participates in the Regional Multiple Listing Service of Minnesota, Inc Broker Reciprocity (sm) program, allowing us to display other broker's listings on our website. All properties are subject to prior sale, change or withdrawal.



Call Affinity Real Estate

218-237-3333

info@affinityrealestate.com



Affinity Real Estate - 600 Park Avenue South - Park Rapids MN 56470



website: www.AffinityRealEstate.com | email: info@affinityrealestate.com | office: 218-237-3333 | fax: 218-237-3377

Affinity
REAL ESTATE INC

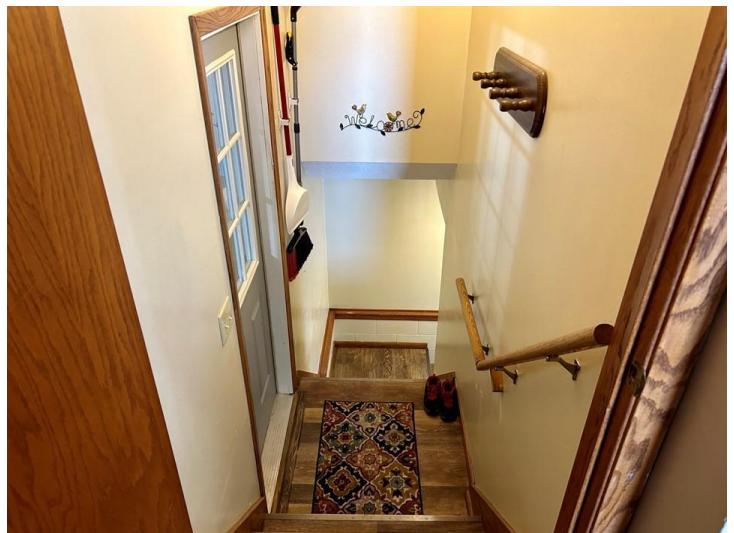
\$299,000
MLS 6345934 Lake Home
710 State Hwy 29
Deer Creek MN 56527



website: www.AffinityRealEstate.com | email: info@affinityrealestate.com | office: 218-237-3333 | fax: 218-237-3377

Affinity
REAL ESTATE INC

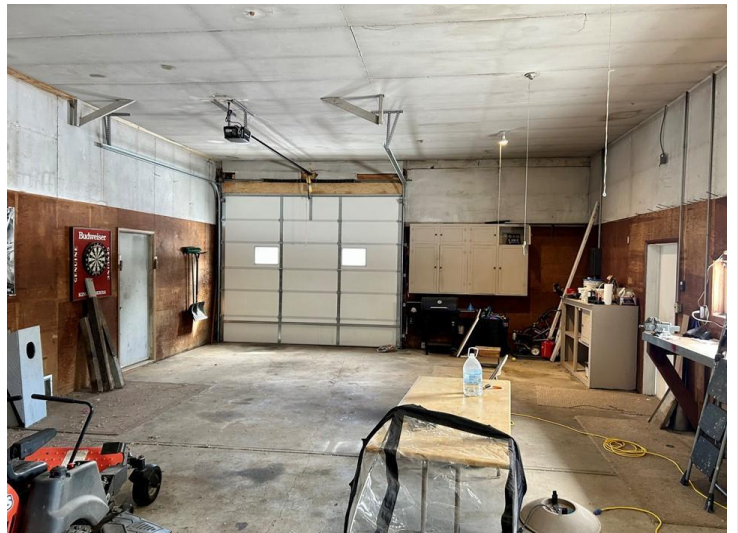
\$299,000
MLS 6345934 Lake Home
710 State Hwy 29
Deer Creek MN 56527



website: www.AffinityRealEstate.com | email: info@affinityrealestate.com | office: 218-237-3333 | fax: 218-237-3377

Affinity
REAL ESTATE INC

\$299,000
MLS 6345934 Lake Home
710 State Hwy 29
Deer Creek MN 56527



website: www.AffinityRealEstate.com | email: info@affinityrealestate.com | office: 218-237-3333 | fax: 218-237-3377

Affinity
REAL ESTATE INC

\$299,000
MLS 6345934 Lake Home
710 State Hwy 29
Deer Creek MN 56527



website: www.AffinityRealEstate.com | email: info@affinityrealestate.com | office: 218-237-3333 | fax: 218-237-3377

Affinity
REAL ESTATE INC

\$299,000
MLS 6345934 Lake Home
710 State Hwy 29
Deer Creek MN 56527



website: www.AffinityRealEstate.com | email: info@affinityrealestate.com | office: 218-237-3333 | fax:218-237-3377



\$299,000

MLS 6345934 Lake Home
710 State Hwy 29
Deer Creek MN 56527