



MLS 6346561 Land

**\$43,000**

0.63 Acres  
Finished Lot(s)

2501 Adaline Lane  
Detroit Lakes MN 56501

Status: Active

**Description:**

READY TO BUILD LOT IN SCENIC AREA Three Lakes is a new residential development located on Long Lake Drive in a scenic area nestled between Long Lake, Munson Lake and St. Clair Lake; and located within the Detroit Lakes city limits. All 11 lots are ready to build and more than ½ an acre, allowing plenty of space for your custom dream home and 3 car garage/shed. Surrounded by blue water lakes, mature oaks and a scenic landscape just 5 minutes from downtown Detroit Lakes, Long Lake Park, and Munson Lake public access. Includes paved curb and gutter streets, city water hookups, and sanitary sewer and storm sewer connections so no well or septic system expense is necessary. Lot construction was managed by the City of Detroit Lakes. Additional amenities including a pocket park will be provided as the next stages of the development are completed. Current plans envision 70 to 100 homes. Don't have a builder? Ask about incentives.

**Additional Details:**

Lot Acres	0.63
Lot Dimensions	irr
School District	22
Taxes	\$184
Taxes with Assessments	\$204
Tax Year	2024

**Additional Features:**

**Driving Directions:**

At the intersection of Highway 59 and Willow Street in Detroit Lakes, head west at the traffic circle to Willow Street West and continue on Long Lake Road for 1.5 miles and turn left on Adaline Lane.



Listed By:  
The Real Estate Company of Detroit Lakes

Affinity Real Estate Inc. participates in the Regional Multiple Listing Service of Minnesota, Inc Broker Reciprocity (sm) program, allowing us to display other broker's listings on our website. All properties are subject to prior sale, change or withdrawal.



Call Affinity Real Estate

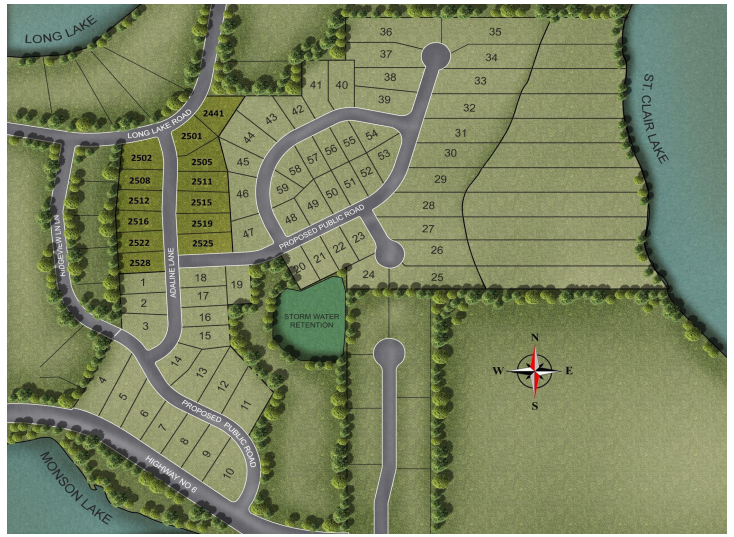
**218-237-3333**

[info@affinityrealestate.com](mailto:info@affinityrealestate.com)



Affinity Real Estate - 600 Park Avenue South - Park Rapids MN 56470





website: [www.AffinityRealEstate.com](http://www.AffinityRealEstate.com) | email: [info@affinityrealestate.com](mailto:info@affinityrealestate.com) | office: 218-237-3333 | fax: 218-237-3377



**\$43,000**  
 MLS 6346561 Land  
 2501 Adaline Lane  
 Detroit Lakes MN 56501